



- **Zeus™ 3**
- **Zeus™ 3S**
- **Zeus™ 3 Glass Helm**
- **Zeus™ 3S Glass Helm MFD**
- **Zeus™ 3S Glass Helm MPU**
- **Zeus™ 2 Glass Helm**

This addendum documents new features that are included in this software release.

Feature	Page
Power save*	3
Power save options*	3
Target tracking zones	4
ZoneTrack™	4
Watching targets	5
Stop watching targets	5

* Not available for Zeus™ 2 Glass Helm.

→ **Note:** The features and options available to you are dependent on the radar antenna(s) connected to your system.

Trademarks

®Reg. U.S. Pat. & Tm. Off, and ™ common law marks. Visit www.navico.com/intellectual-property to review the global trademark rights and accreditations for Navico Holding AS and other entities.

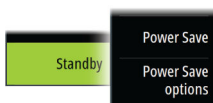
- B&G® is a trademark of Navico Holding AS.
- Zeus™ is a trademark of Navico Holding AS.
- ZoneTrack™ is a trademark of Navico Holding AS.

Copyright

Copyright © 2021 Navico Holding AS.

Radar operational modes

The radar's operational modes are controlled from the Radar panel menu. The modes available are dependent on your radar's capability.



Power save

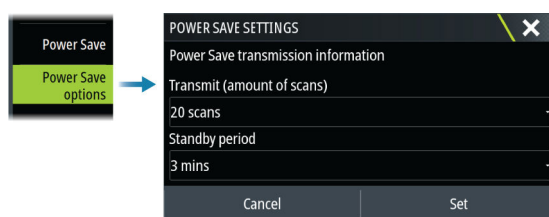
→ **Note:** The latest software must be installed in the radar transceiver in order to use the power save feature.

The power save menu option applies the settings made in the power save settings dialog to the radar source. The power save menu option is only available when the radar is in standby mode.

Select the standby option, and then the transmit option to return to normal transmit mode.

Power save options

Opens the power save settings dialog. The power save options menu option is only available when the radar source is in standby mode.



The settings made in the power save settings dialog are applied when the Set option is selected.

Use the power save settings dialog to specify the number of scans while transmitting and the amount of time the radar source will be in standby, during power save mode.

When in standby during power save mode, the radar image freezes and becomes grey-scaled. When the specified standby time period ends, the radar will commence transmitting until the completion of the number of scans specified is reached. The radar will then go into power save standby again. The power save cycle will continue until the radar source is in standby mode, transmit mode or powered off.

If a radar control is adjusted during the standby time period, the radar will commence transmitting until the completion of the number of scans specified is reached.

Guard Zone alarms remain available while power save mode is active. If an alarm is triggered while in power save mode, the radar will remain transmitting indefinitely. Power save mode will need to be re-enabled manually in this event.

Power save settings will be applied to both radar ranges in dual range mode.

Tracking targets

→ **Note:** This manual describes a variety of tracking options for different radar systems. The available tracking options in your system are dependent on your radar system's capabilities.

→ **Note:** Tracking targets requires a good heading source and a valid GPS position fix.

Any radar target within a preset range can be acquired and tracked. The system displays targets in the radar panel based on the settings you make in the menu and the vessels and tracked targets dialog.

You can set up tracking zones. Refer to "*Target tracking zones*" on page 4. The system will track targets that enter the zones, which meet the settings you make in the vessels and tracked targets dialog.

An alert is triggered if the number of tracked targets exceeds maximum system limitations and capacity. When the number of targets exceed limits or capacity, only the targets closest to own vessel will be displayed.

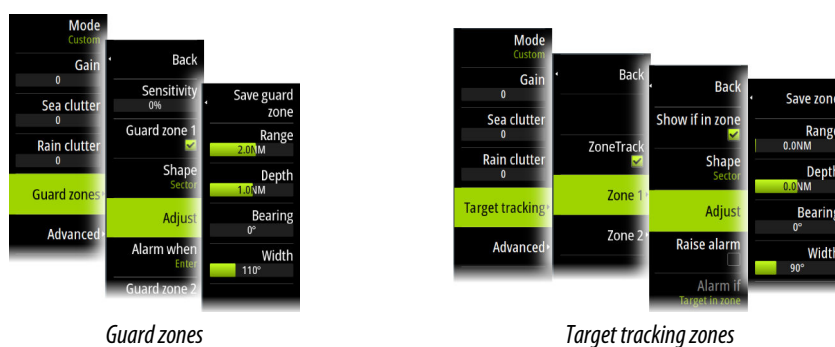
Target tracking zones

The target tracking zone function allows for automatic acquisition of radar targets when they enter a user defined zone.

The guard zone function does not track targets automatically when they enter the guard zone. The function only raises an alarm specified for it when it enters the guard zone.

To specify which targets are displayed in the radar panel, use the vessels and tracked targets dialog to define dangerous targets, targets of interest and create target filters.

The guard zone option or target tracking zone option depends on the radar source capability. Setting up the zones is similar.



Two zones can be defined, each with individual settings.

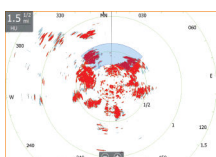
When a target enters a zone, it will automatically be considered as safe or dangerous based on the CPA/TCPA settings.

ZoneTrack

When selected, you can setup tracking zones or reactivate tracking zones which were already setup. Alarms can be received when the radar acquires a target inside a zone.

Unselect to disable all zones. The zones will be removed from the radar image. The radar stops acquiring targets inside the zones and no alarms will be sent.

→ **Note:** The ZoneTrack target limit is 50 targets per zone. The target limit cannot be changed.



Setting a guard zone around your vessel

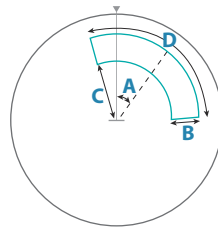
A guard zone is an area (either circular or a sector) that you can define on the radar image. When activated, an alarm alerts you when a radar target enters or exits the zone.

Creating guard zones or target tracking zones

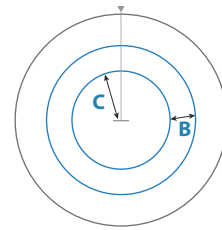
A guard zone or target tracking zone is an area (either circular or a sector) that you can define on the radar image. When activated, an alarm alerts you when a radar target enters or exits the zone.

Defining a guard zone or a target tracking zone

1. Ensure that the cursor is not active.
2. Activate the menu, select guard zone or target tracking, then select one of the zones.
3. Select the shape for the zone.
The adjustment options depend on the zone shape.
4. Select Adjust to define the settings for the zone. The values can be set from the menu or by dragging on the radar panel.
 - A: Bearing, relative to the vessel heading
 - B: Depth
 - C: Range, relative to vessel center
 - D: Width



Shape: Sector



Shape: Circle

5. Select the save option to save your settings.

Guard zone or target tracking zone alarm settings

An alarm can be set to activate when a radar target breaches the zone limits.

Guard zones, select the **Alarm when** option to toggle between activating the alarm when the target enters or exits the guard zone.

Target tracking zones, select Raise alarm and select the **Alarm if** option to toggle between activating the alarm while the target is in or when the target exits the target tracking zone.

Sensitivity

The guard zone sensitivity can be adjusted to eliminate alarms for small targets.

Watching targets

Use this option to help you follow specific targets on the radar image.

Select a target, then select the Watch target option. The target becomes highlighted. Repeat the process to watch another target. Multiple targets can be watched.



Stop watching targets

You can stop watching targets which no longer need special attention.

To stop watching specific targets, select a watched target on the radar image, then the Stop watching option. The stop watching option is available in the menu while a watched target is selected.



Select the stop watching all option to stop watching all the watched targets. The stop watching all option is available when targets are being watched and while the cursor is cleared from the radar image.

