



X-Chart Manager

App Guide

English

Software version: 2.1



NSS® 4 | Zeus® SR

NSX® | Zeus® S

Copyright

©2025 Navico Group. All Rights Reserved. Navico Group is a division of Brunswick Corporation.

Trademarks

®Reg. U.S. Pat. & Tm. Off, and ™ common law marks. Visit www.navico.com/intellectual-property to review the global trademark rights and accreditations for Navico Group and other entities.

- Brunswick® is a trademark of Brunswick Corporation.
- Navico® is a trademark of Navico Group.
- B&G® is a trademark of Navico Group.
- Simrad® is a trademark of Kongsberg Maritime AS, licensed to Navico Group.
- NSS® is a trademark of Navico Group.
- NSX® is a trademark of Navico Group.
- Zeus® is a trademark of Navico Group.
- C-MAP® is a trademark of Navico Group.
- C-MAP DISCOVER X® is a trademark of Navico Group.
- C-MAP REVEAL X® is a trademark of Navico Group.
- SD® and microSD® are trademarks of SD-3C, LLC.

Warranty

This product's warranty is supplied as a separate document.

Safety, disclaimer and compliance

This product's safety, disclaimer and compliance statements are supplied as a separate document.

Internet usage

Some features in this product use an internet connection to perform data downloads and uploads. Internet usage via a connected mobile/cell phone internet connection or a pay-per-MB type internet connection may require large data usage. Your service provider may charge you based on the amount of data you transfer. If you are unsure, contact your service provider to confirm rates and restrictions.

More information

Document version: 001

This document was prepared using software version 2.1.

Features described in this document may vary from your unit due to connected devices, settings, brand, and continuous software development.

For the latest version of this document in supported languages, and other related documentation, visit www.simrad-yachting.com/downloads or www.bandg.com/downloads.

Contact us

For product support and service information, visit www.simrad-yachting.com/contact-us or www.bandg.com/contact-us.

CONTENTS

- 4 Overview**
- 4 Requirements**
- 4 Service offering**
- 5 Getting started**
- 6 Registration prompts**
- 7 View chart details**
- 8 Custom chart area**
 - 9 Rectangular area selection
 - 10 Polygon area selection
 - 11 Update area chart data
- 12 Buy and install chart data**
 - 12 Install chart data onto internal memory
 - 13 Transfer chart data to a microSD® card
 - 14 Install chart data onto a microSD® card
 - 15 Chart storage location
 - 15 Upgrade from Discover X to Reveal X chart

OVERVIEW

The C-MAP X-Chart Manager app can be used to download the latest updates for Discover X or Reveal X chosen navigation area and also to purchase new charts directly from your display unit.

REQUIREMENTS

Chart data updates are available to:

- Users with a Simrad® or B&G account.
- Users who have previously purchased a digital license.
- Users who have registered their chart card (either online or via the display unit).

You need an internet connection for downloads and updates.

→ **Note:** *If you have purchased a digital license, you can use a high capacity microSD® card if you intend on downloading large or many charts.*

→ **Note:** *MicroSD® cards up to 256 GB storage capacity are supported.*

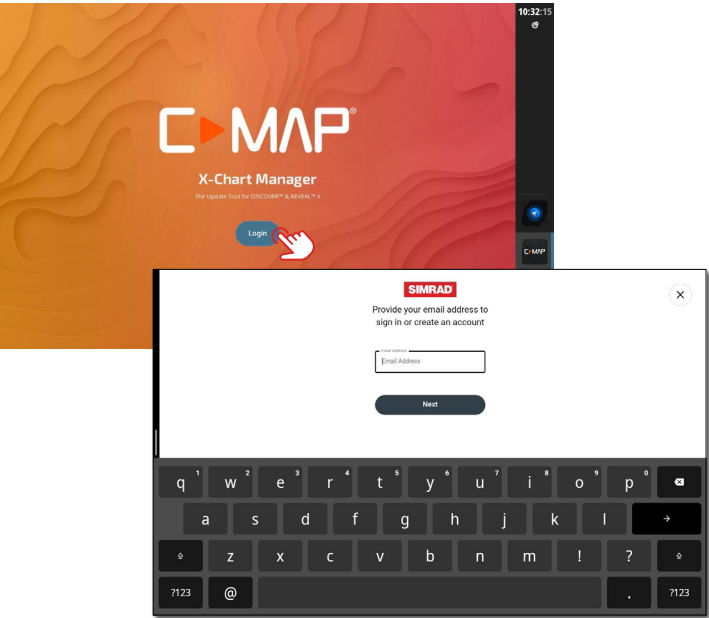
SERVICE OFFERING

The X-Chart Manager app offers updates via a subscription based service and a subscription fee applies. This offering applies to chart cards purchased at retail outlets or for digital licenses from C-MAP X-store <https://xstore.c-map.com>.

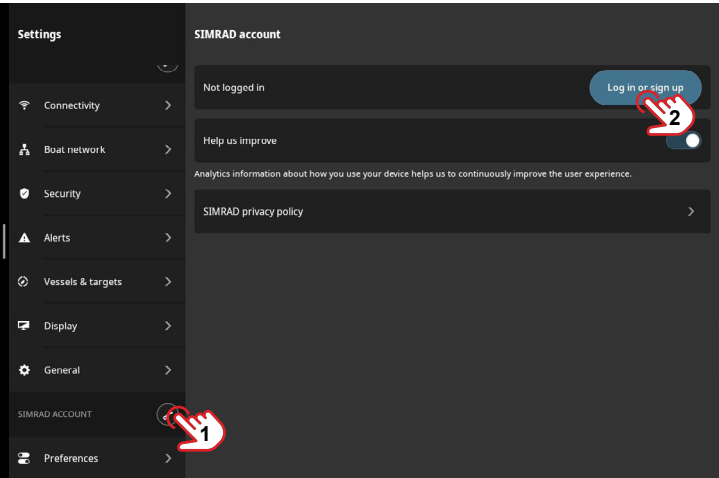
You will receive chart data updates at no cost for 12 months from the first registration date of your microSD® chart card or digital license purchase date.

GETTING STARTED

If you have an existing Simrad® or B&G account, select **Log in** when you first load the app.



You can also login with your account details or sign up for an account by navigating to **Settings > Simrad Account (1) > Log in or sign up (2)**.

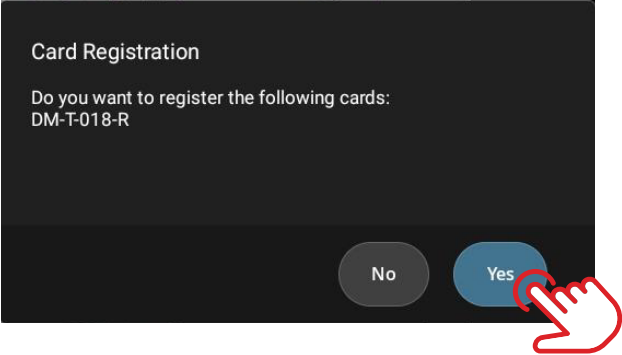
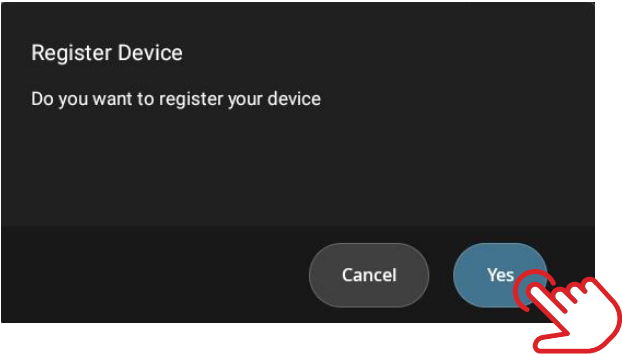


Add your login details or sign up and follow the on-screen prompts.

➔ **Note:** An internet connection is required for the app to work. We recommend you complete all chart updates prior to leaving port.

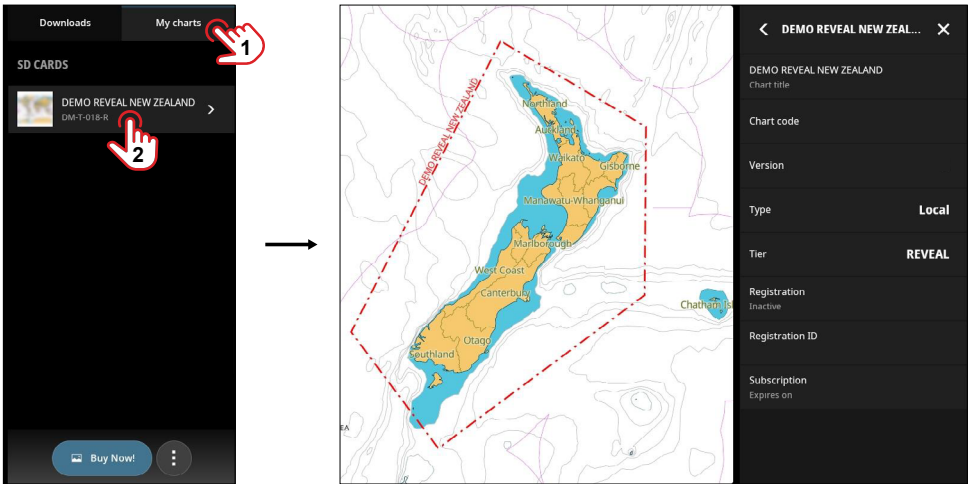
REGISTRATION PROMPTS

Once you have successfully logged in to the app and device, you will be prompted to register your device and the microSD® chart card.



VIEW CHART DETAILS

Select **My charts** (1) tab and then select the chart (2) listed on the microSD® card or the digital license. The chart will center on this region.



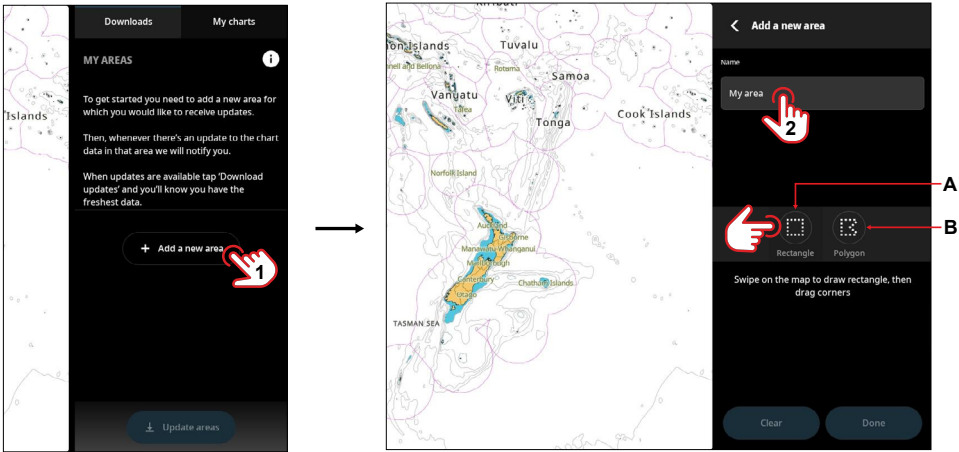
The following chart details are available:

- Name of the chart region
- Chart code
- Version — map version
- Type — world base map or digital license
- Location — storage location of the chart data
- Tier — Discover X or Reveal X
- Registration status
- Registration ID
- Subscription expiry date

CUSTOM CHART AREA

This feature allows you to access the download tab on an area of the chart that you want to monitor and download updates.

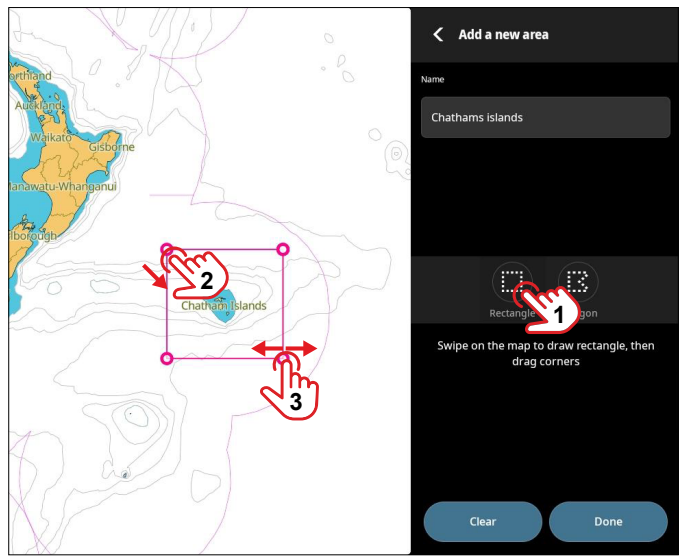
To define a custom chart area, select **Add a new area** (1) then give the area a name (2) for future reference.



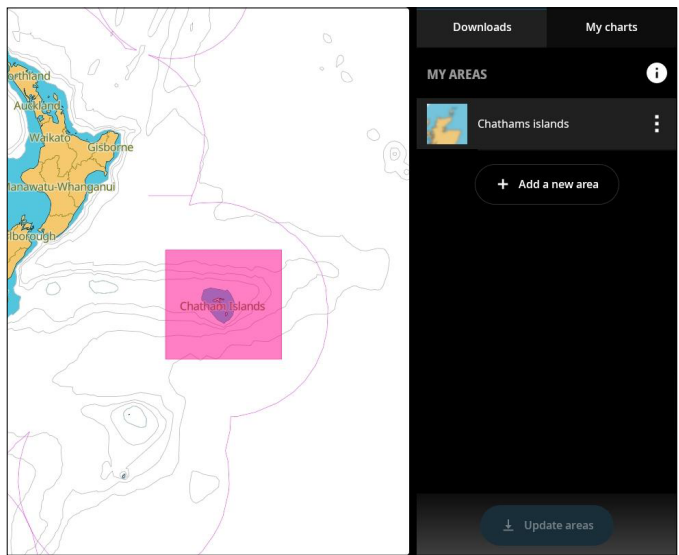
You have two options to select your custom chart area, select either **Rectangle** (A) or **Polygon** (B).

Rectangular area selection

Adjust the chart image via zoom controls to your requirements, then select **Rectangle** (1). Now select a point on the chart and drag your finger diagonally across the screen (2). You can select and drag any of the four corner handles (3) to adjust your selection area.



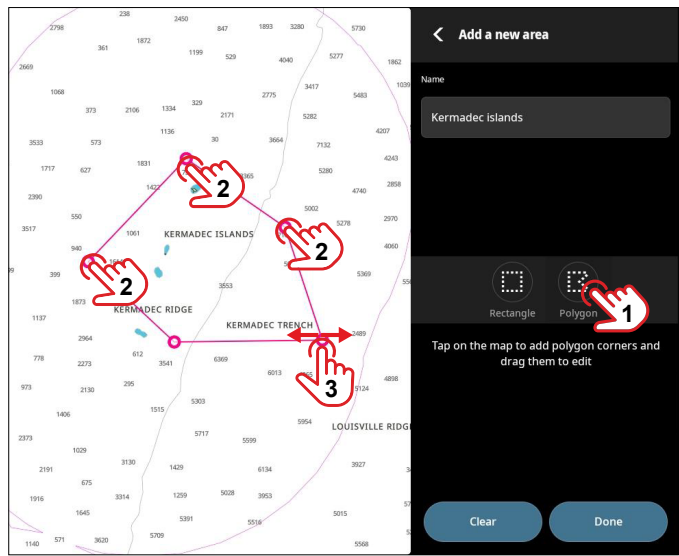
Select **Done** when you're finished or **Clear** to re-select the area. A pink overlay indicates your custom area.



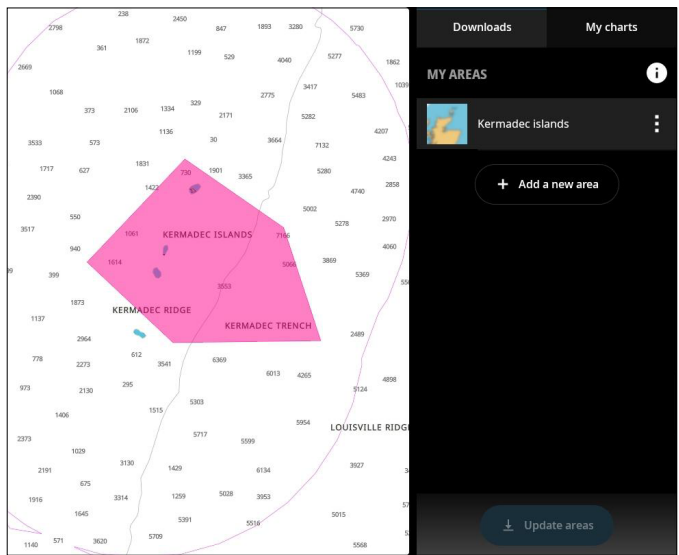
➔ **Note:** An error message displays if the selected area is larger than 1000 km² (386 mi²).

Polygon area selection

Adjust the chart image via zoom controls to your requirements, then select **Polygon** (1). Now select multiple points (2) on the chart to mark the area. You can select and drag any of the handles (3) to adjust your selection.



Select **Done** when you're finished or **Clear** to re-select the area. A pink overlay indicates your custom area.

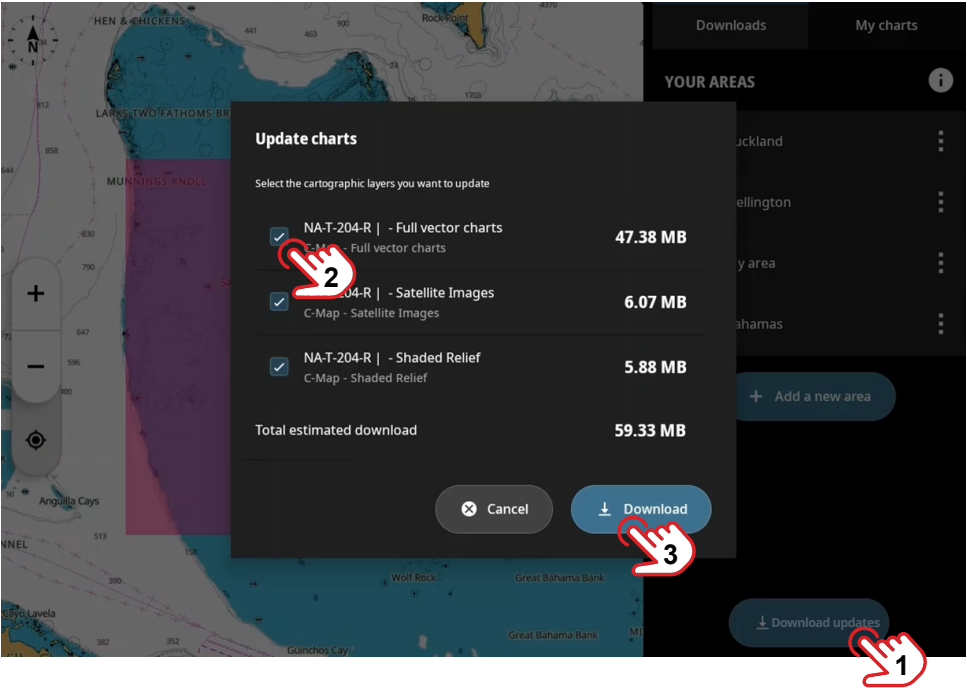


➔ **Note:** An error message displays if the selected area is larger than 1000 km² (386 mi²).

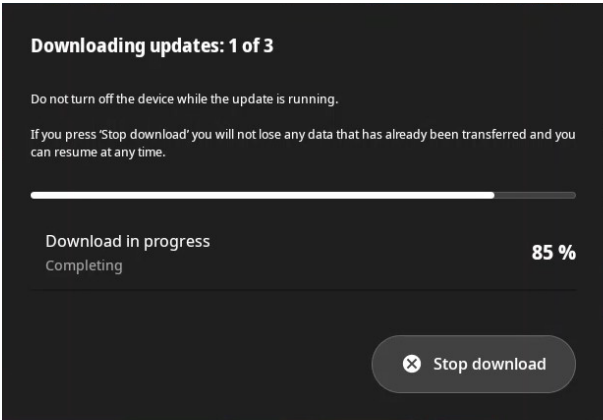
Update area chart data

If an update is available for your chart area, the **Download updates** (1) button is enabled. All available download data types are displayed, select the check box (2) next to the list items, then select **Download** (3).

→ *Note: An internet connection is required to download chart data updates.*



A download progress indicator displays the status of the update and a confirmation message displays when the updates are successful.



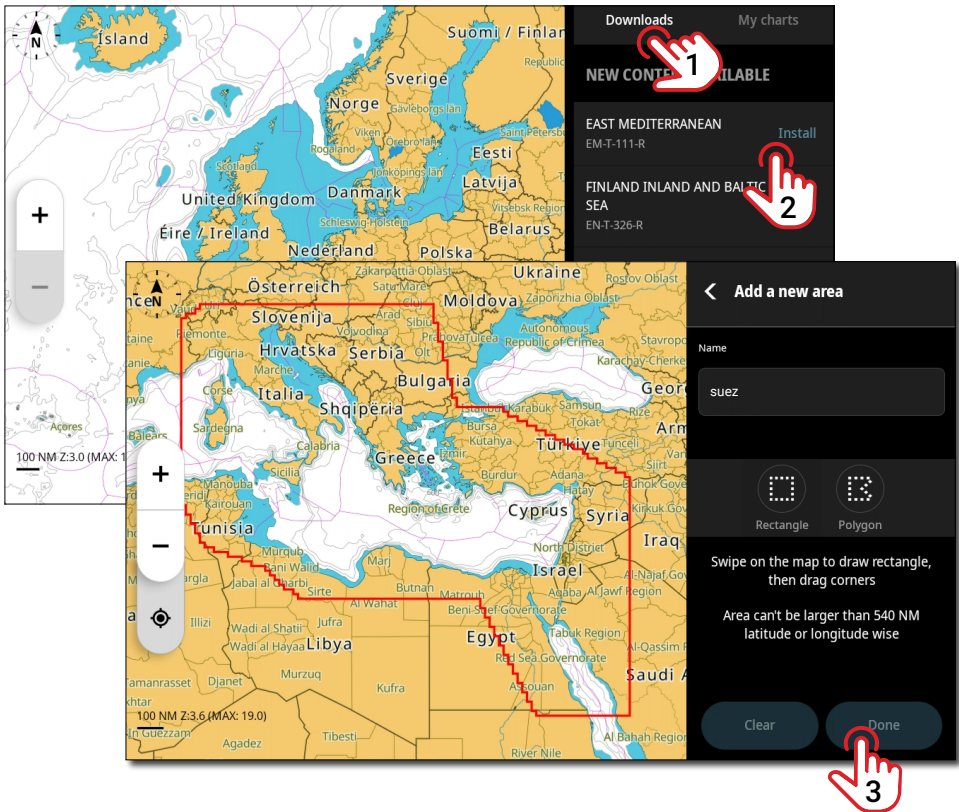
BUY AND INSTALL CHART DATA

→ *Note: An internet connection is required to download chart data.*

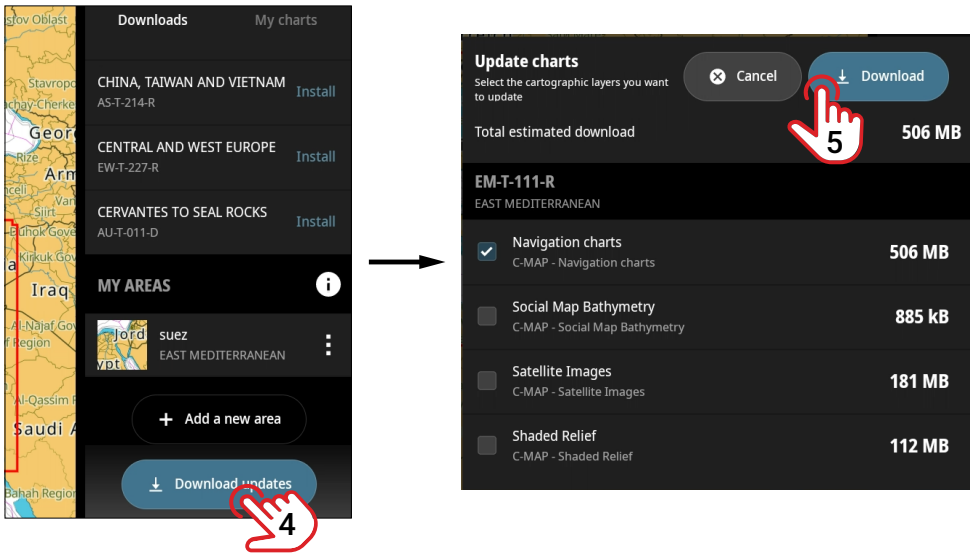
Install chart data onto internal memory

You can buy a digital map license and install it on the unit's internal memory.

Go to the **Downloads** (1) tab and select **Install** (2) alongside the region you want. Give the area a name, draw your area of interest on the screen using the rectangle or polygon tool, then select **Done** (3).



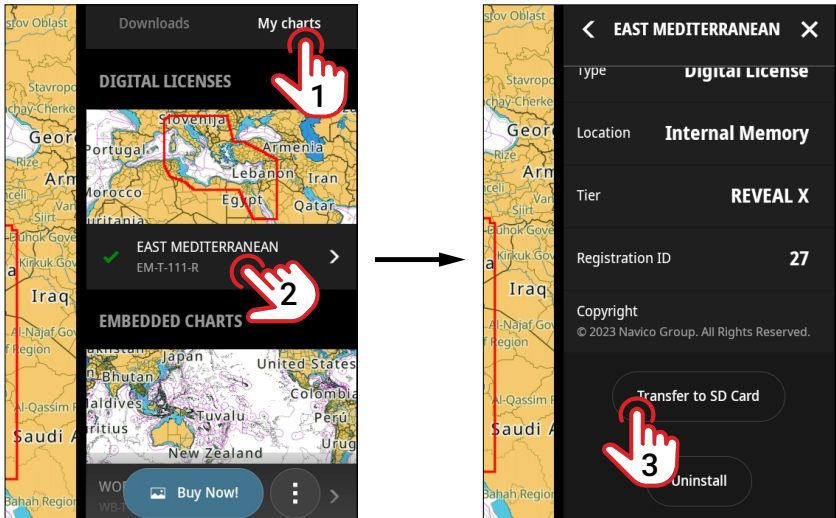
Select **Download updates** (4) for the displayed region then select **Download** (5) on the pop-up dialog to proceed with the chart download. Download file sizes are displayed for your information.



When the download is complete, the chart data is stored on the unit's internal memory.

Transfer chart data to a microSD® card

To free up internal memory space for waypoints or routes, insert an empty microSD® card into the unit, then follow these steps to transfer the chart data to the microSD® card. Select the **My charts** tab (1), select the chart license (2), scroll to the bottom of chart details and select **Transfer to SD card** (3).

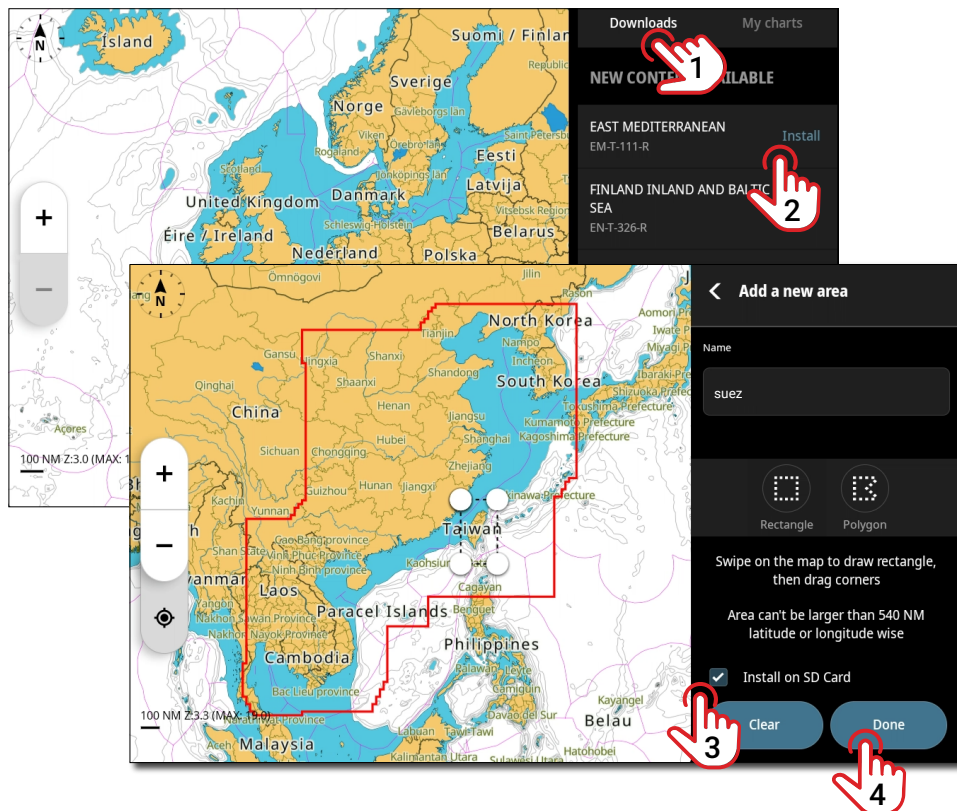


Install chart data onto a microSD® card

You can buy a digital chart license and install it directly onto the microSD® card.

Insert an empty microSD® card into the unit. Go to the **Downloads** (1) tab and select **Install** (2) alongside the region you want.

Give the area a name, draw your area of interest on the screen using the rectangle or polygon tool, check the box next to **Install on SD card** (3) then select **Done** (4).

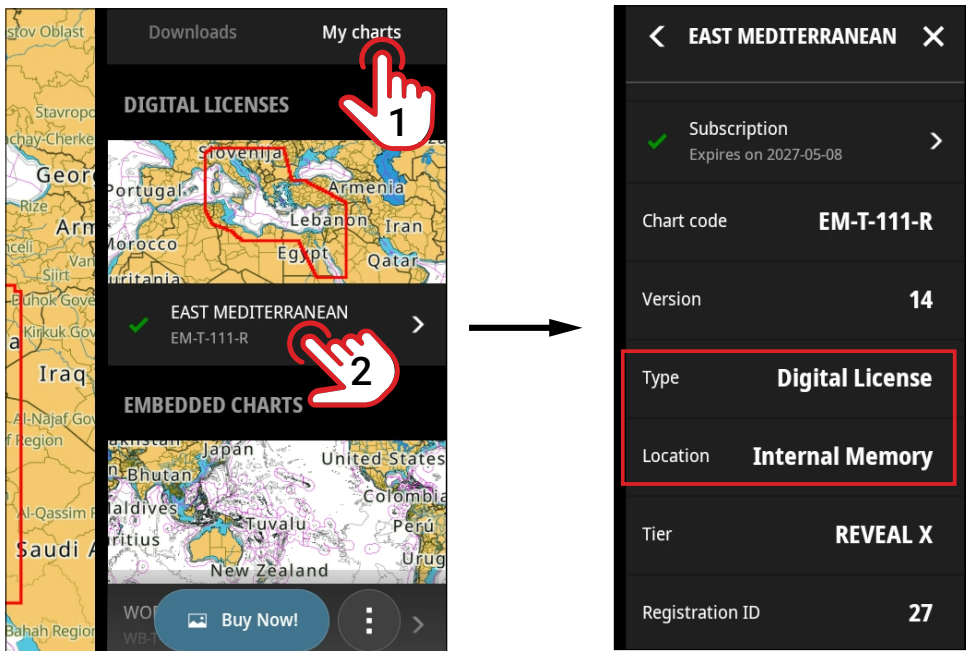


Select **Download updates** for the displayed region then select **Download** on the pop-up dialog to proceed with the chart download. Download file sizes are displayed for your information.

When the download is complete, the chart data is stored on the microSD® card.

Chart storage location

Select **My charts** tab (1), select the chart license (2) then scroll to the bottom of the chart details. The license type and storage location is displayed along with the subscription expiry date and tier.



Upgrade from Discover X to Reveal X chart

You can upgrade from a Discover X chart to a Reveal X chart via the C-MAP website. Reveal X charts include all the rich data and features in Discover X, plus additional layers to enrich your time on the water.

Navigate to www.c-map.com/support/ and follow the instructions.

