



Tracks

App Guide

English

Software version: 2.1



NSS® 4 | Zeus® SR

NSX® | Zeus® S

Copyright

©2025 Navico Group. All Rights Reserved. Navico Group is a division of Brunswick Corporation.

Trademarks

®Reg. U.S. Pat. & Tm. Off, and ™ common law marks. Visit www.navico.com/intellectual-property to review the global trademark rights and accreditations for Navico Group and other entities.

- Brunswick® is a trademark of Brunswick Corporation.
- Navico® is a trademark of Navico Group.
- B&G® is a trademark of Navico Group.
- Simrad® is a trademark of Kongsberg Maritime AS, licensed to Navico Group.
- NSS® is a trademark of Navico Group.
- NSX® is a trademark of Navico Group.
- Zeus® is a trademark of Navico Group.
- SD® and microSD® are trademarks of SD-3C, LLC.

Warranty

This product's warranty is supplied as a separate document.

Safety, disclaimer and compliance

This product's safety, disclaimer and compliance statements are supplied as a separate document.

Internet usage

Some features in this product use an internet connection to perform data downloads and uploads. Internet usage via a connected mobile/cell phone internet connection or a pay-per-MB type internet connection may require large data usage. Your service provider may charge you based on the amount of data you transfer. If you are unsure, contact your service provider to confirm rates and restrictions.

More information

Document version: 001

This document was prepared using software version 2.1.

Features described in this document may vary from your unit due to connected devices, settings, brand, and continuous software development.

For the latest version of this document in supported languages, and other related documentation, visit www.simrad-yachting.com/downloads or www.bandg.com/downloads.

Contact us

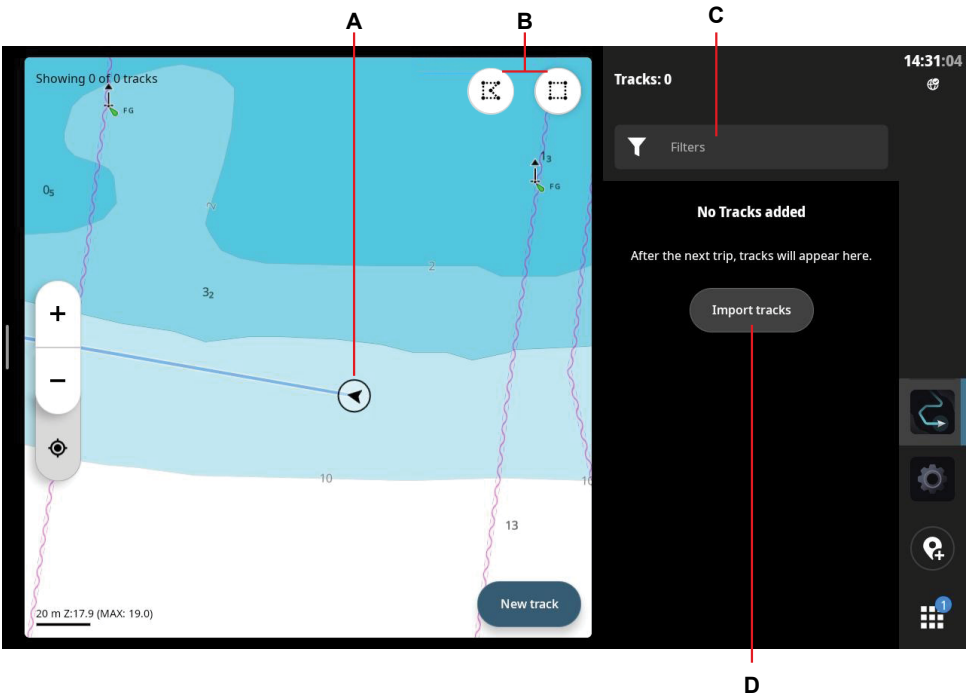
For product support and service information, visit www.simrad-yachting.com/contact-us or www.bandg.com/contact-us.

CONTENTS

- 4 Overview**
- 5 Start track**
- 5 End track**
- 6 View track details**
 - 7 Tag a track
 - 9 Tag multiple tracks
- 10 Create a route**
- 11 Delete a track**
 - 11 Delete all tracks
- 12 Import tracks**
- 13 Export a track**
 - 13 Export all tracks
- 15 Filter saved tracks**
- 16 Sort tracks**
- 17 Track settings**

OVERVIEW

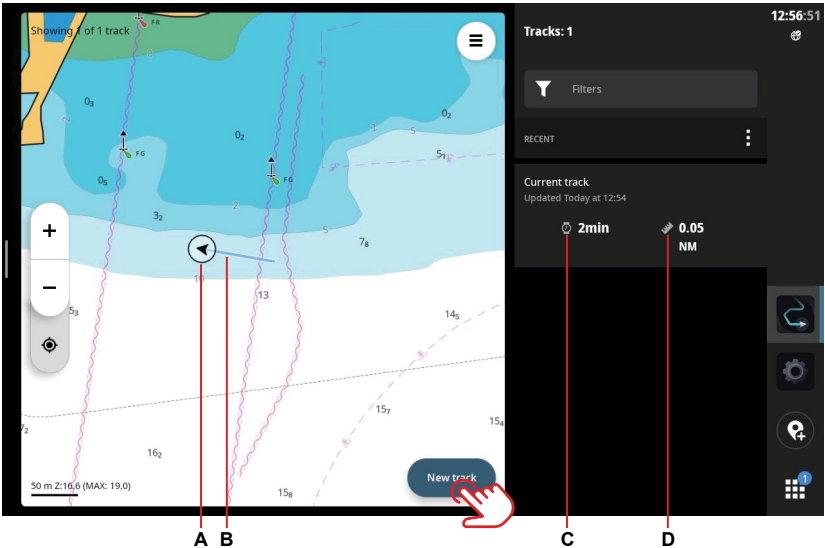
Tracks are graphical representations of the paths a vessel has traveled. Use the Tracks app to record tracks, manage tracks, or create routes from tracks.



- A Your vessel
- B Shape selection
- C Tracks filter
- D Import tracks button

START TRACK

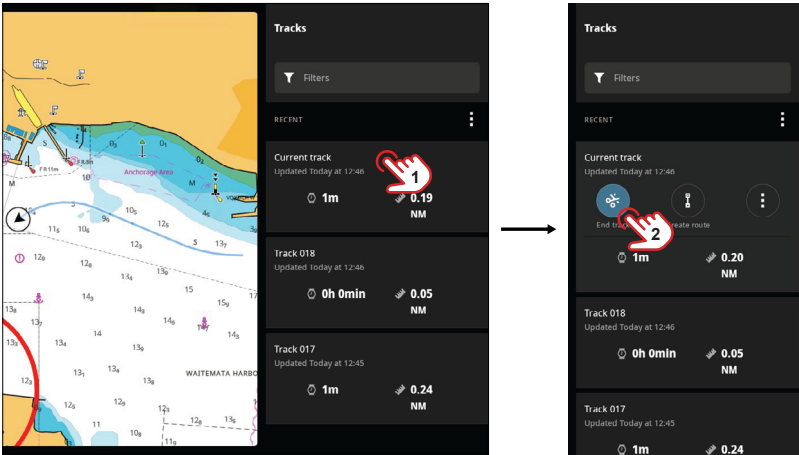
Select **New track** to start a new track. Tracking begins from the current vessel location.



- A Your vessel
- B Track — represented by a blue line
- C Time — shows current tracking duration
- D Length — shows current track length

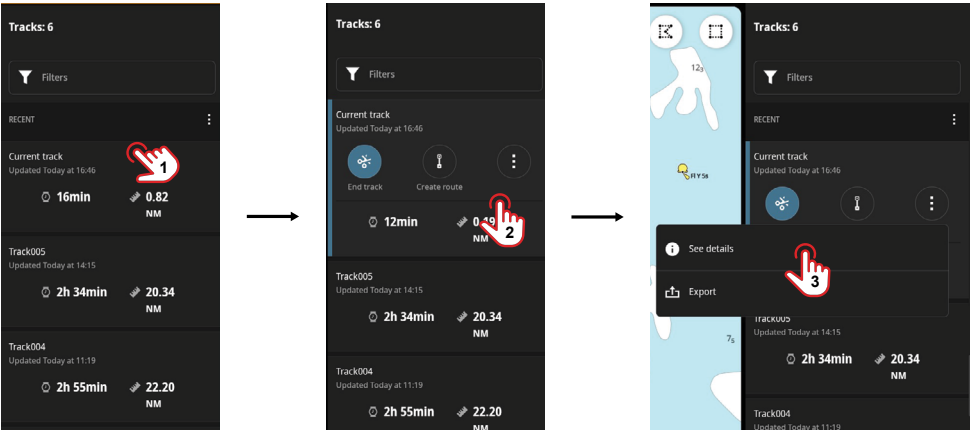
END TRACK

Select **Current track (1)** from the **Tracks** panel, then **End track (2)** (or **Stop track** on a B&G unit) to stop tracking.

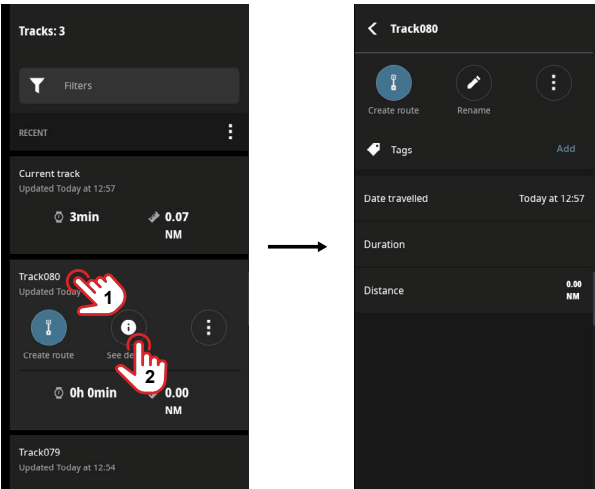


VIEW TRACK DETAILS

To view the **Current track** details select the track (1), select the options button (2), then select **See details** (3). You can then select the options button to rename the track, change the track color, add a tag, export, end, or create a route from the track.



To view saved track details select the track (1) then select **See details** (2). You can then select the options button to rename the track, change the track color, export, delete or add a tag to a track.

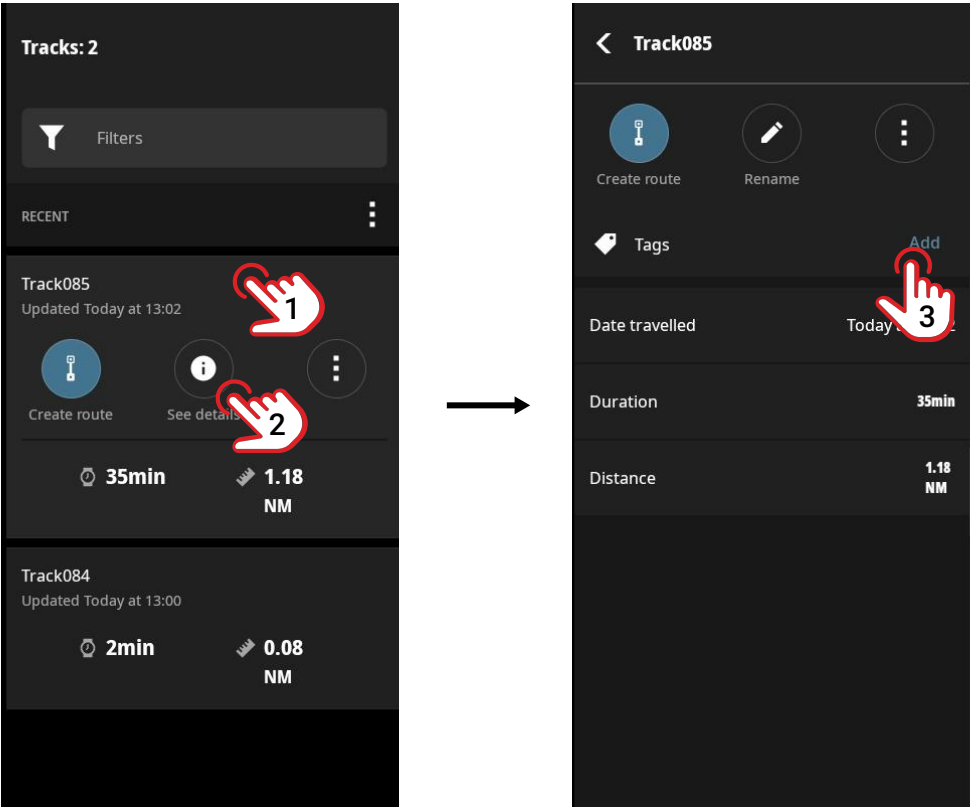


Tag a track

You can tag a track with a number of unique labels to easily identify and/or group them when you search for routes when using a filter.

Tags are shared across waypoints, routes and tracks. This can be helpful when grouping similar themed tracks. For example, 'sunset' to describe a track with spectacular views.

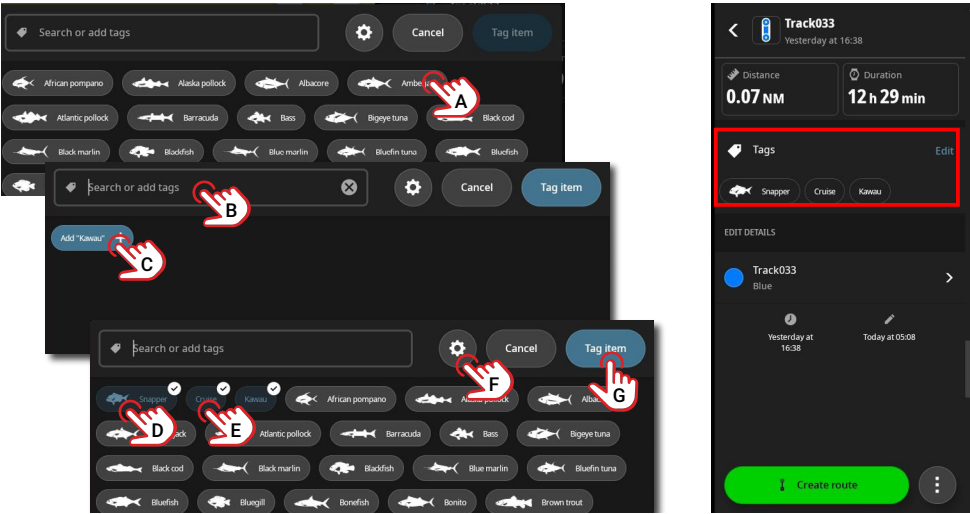
To tag a track select the track from the list (1), select **See details** (2), then select **Add** (3).



➔ *Note: Adding a tag is optional and is in addition to naming a track.*

On the tags panel, you can select an existing tag (A) or add a new tag (B) by typing the text then select + (C) to add the tag.

You can select multiple tags (D, E). Tags are added to the track when you select **Tag item** (G). The tags are displayed on the track details panel.

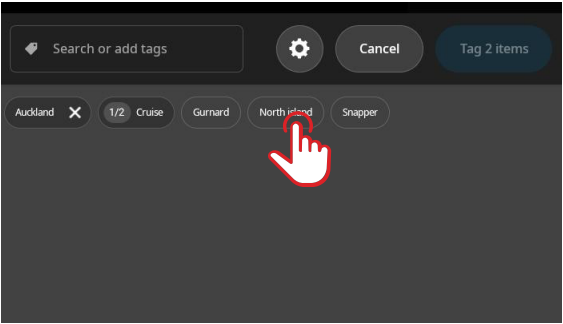
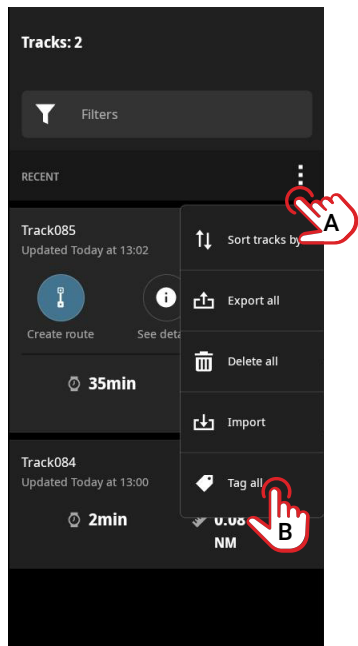


→ **Note:** Select the cog icon (F) at any time on the tags panel to edit or delete an existing tag.

Tag multiple tracks

You can tag multiple tracks on your tracks list. This can be a filtered list or a list in the recent view.

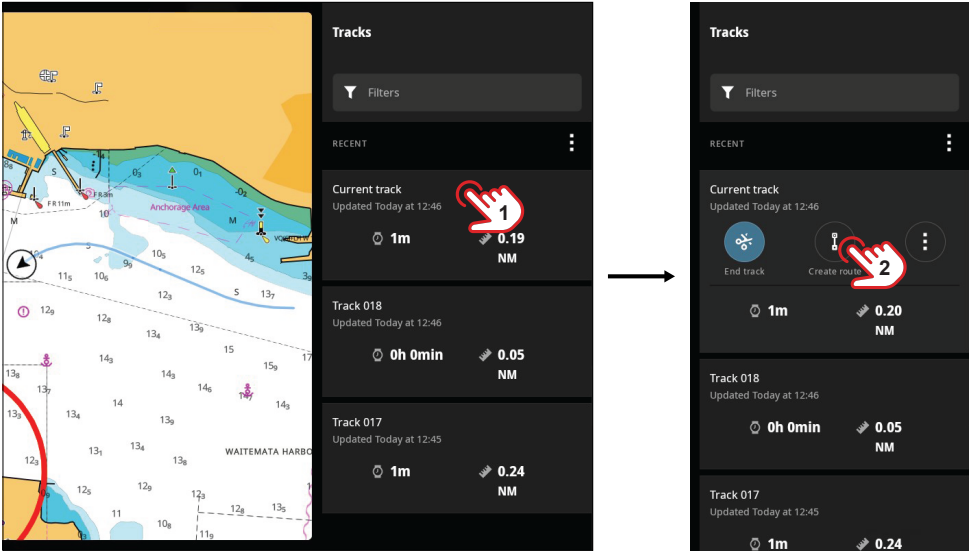
Select the options button (A) then select **Tag all** (B). On the tags panel you can select an existing tag, add a new tag, then select **Tag items** to add the tags.



➔ **Note:** Each tag displays the number of items in the list which have the tag applied to them.

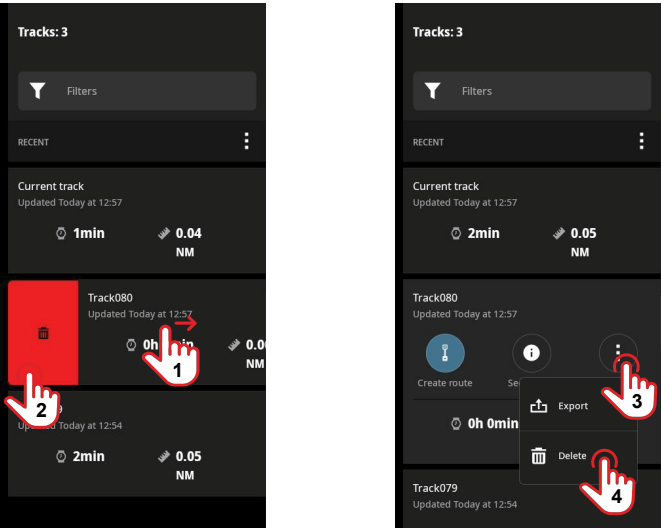
CREATE A ROUTE

Any track can be saved as a route.
For current or saved tracks, start by selecting the track (1), then select **Create route** (2).
You can view saved routes in the Waypoints & Routes or Chart apps.



DELETE A TRACK

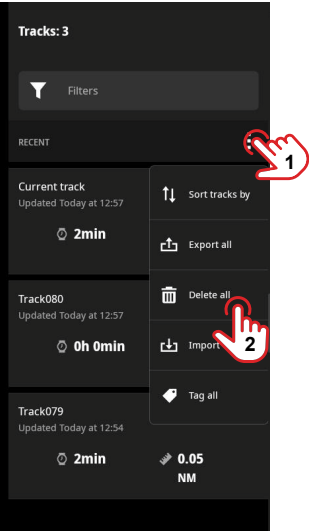
To delete a track, slide the track panel to the right (1), then select the delete button (2). Alternatively, select the options button (3) and then **Delete** (4).



→ *Note: To delete current tracks, you need to end and save them first.*

Delete all tracks

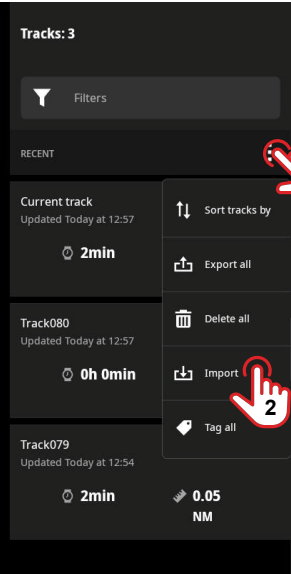
To delete all recorded tracks, select the options button (1), then **Delete all** (2).



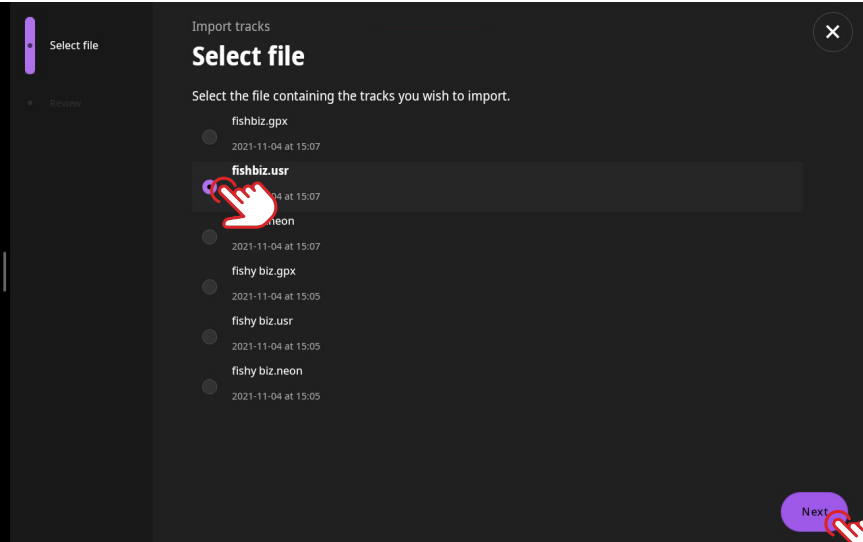
→ *Note: Delete actions cannot be reversed.*

IMPORT TRACKS

To import tracks from a microSD® card or USB storage device, select the options button (1), then select **Import** (2).

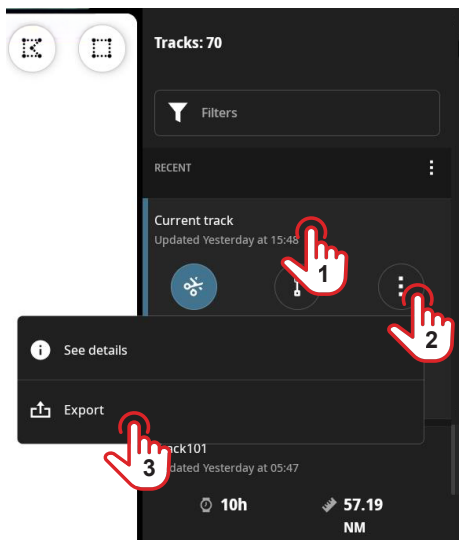


Follow the on-screen prompts to select tracks and import them.



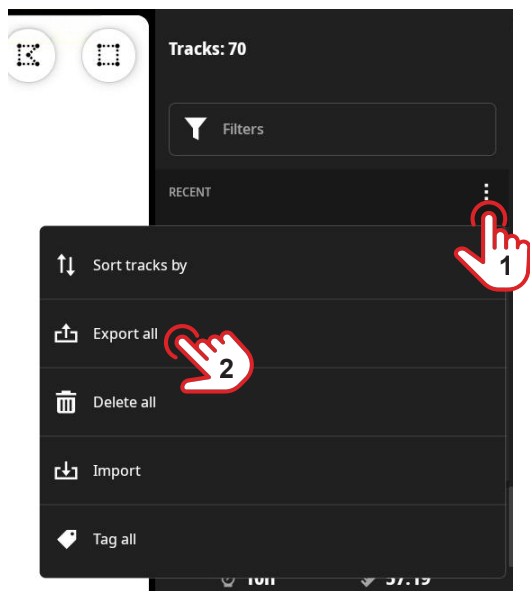
EXPORT A TRACK

To export a track to a microSD® card or USB storage device, select the track (1), select the options button (2) and then **Export** (3).

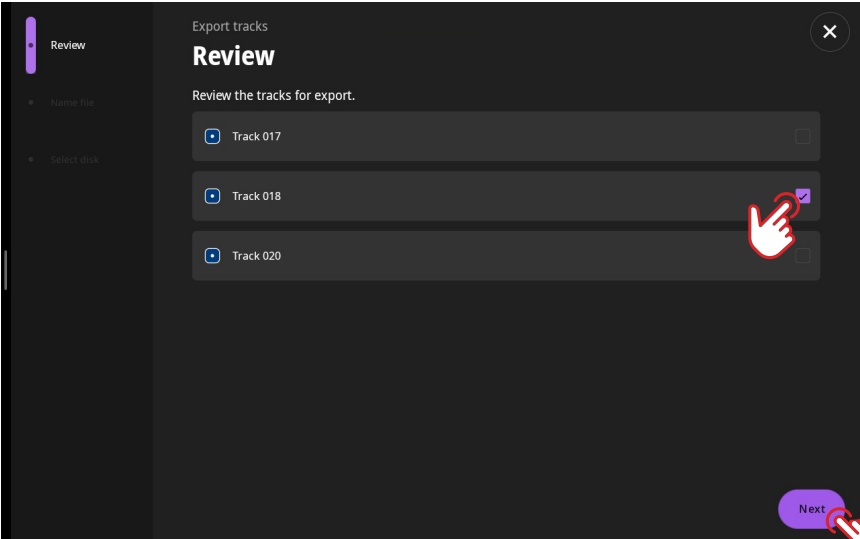


Export all tracks

To export all tracks to a microSD® card or USB storage device, select the options button (1), then **Export all** (2).

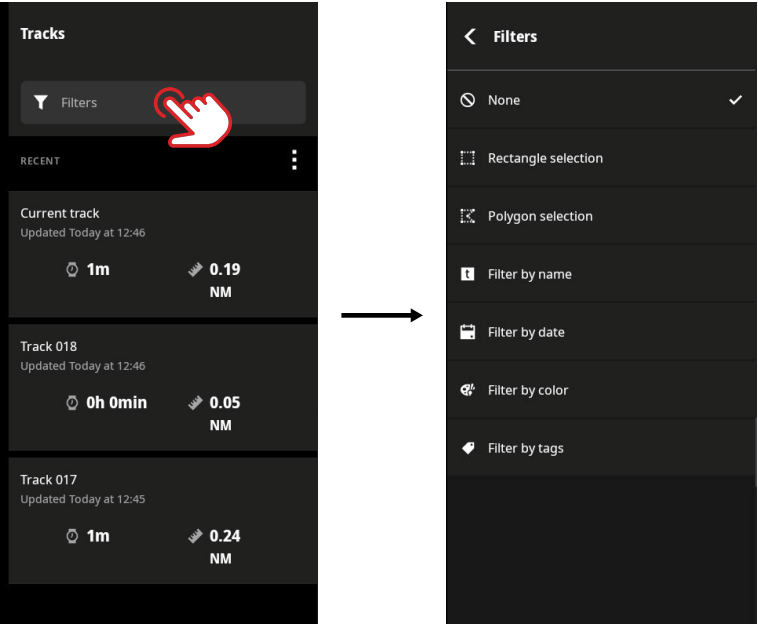


Follow the on-screen prompts to select the tracks you want to export, rename the track file and select a location to save the file.



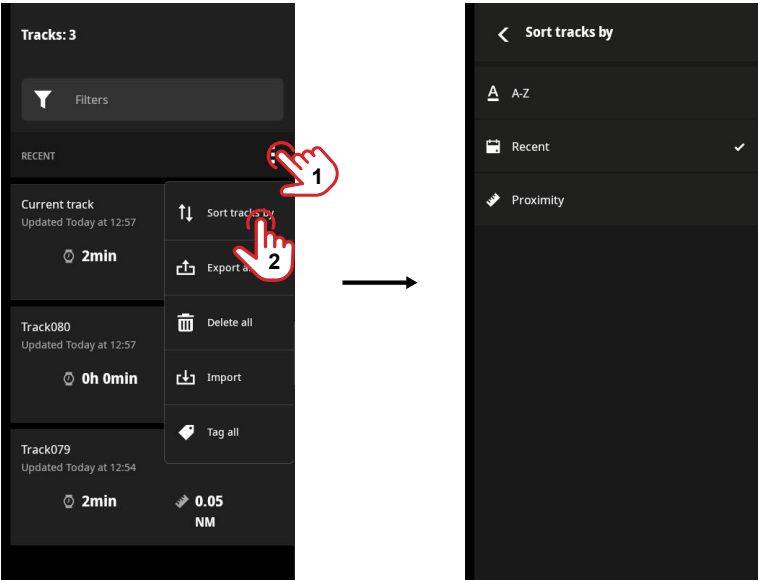
FILTER SAVED TRACKS

Select **Filters** to view specific tracks displayed on the list. Choose to filter by name, date, color or tag, then follow the on-screen prompts.



SORT TRACKS

Use the sort option to sort tracks alphabetically, by when they were created, or by proximity to your vessel.



TRACK SETTINGS

Open the **Chart** app, select the settings button, scroll down the **User content** section and select **Tracks** to view and adjust tracks settings.

