

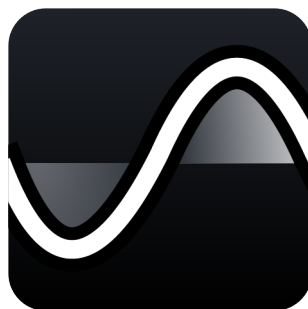


Tides

App Guide

English

Software version: 2.1



NSS® 4 | Zeus® SR

NSX® | Zeus® S

Copyright

©2025 Navico Group. All Rights Reserved. Navico Group is a division of Brunswick Corporation.

Trademarks

®Reg. U.S. Pat. & Tm. Off, and ™ common law marks. Visit www.navico.com/intellectual-property to review the global trademark rights and accreditations for Navico Group and other entities.

- Brunswick® is a trademark of Brunswick Corporation.
- Navico® is a trademark of Navico Group.
- B&G® is a trademark of Navico Group.
- Simrad® is a trademark of Kongsberg Maritime AS, licensed to Navico Group.

Warranty

This product's warranty is supplied as a separate document.

Safety, disclaimer and compliance

This product's safety, disclaimer and compliance statements are supplied as a separate document.

Internet usage

Some features in this product use an internet connection to perform data downloads and uploads. Internet usage via a connected mobile/cell phone internet connection or a pay-per-MB type internet connection may require large data usage. Your service provider may charge you based on the amount of data you transfer. If you are unsure, contact your service provider to confirm rates and restrictions.

More information

Document version: 001

This document was prepared using software version 2.1.

Features described in this document may vary from your unit due to connected devices, settings, brand, and continuous software development.

For the latest version of this document in supported languages, and other related documentation, visit www.simrad-yachting.com/downloads or www.bandg.com/downloads.

Contact us

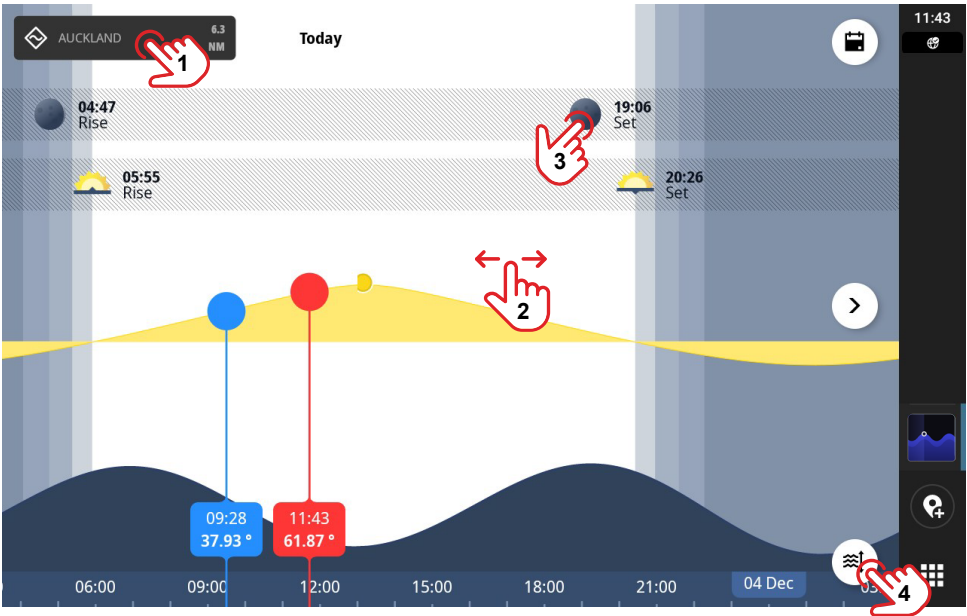
For product support and service information, visit www.simrad-yachting.com/contact-us or www.bandg.com/contact-us.

CONTENTS

- 4 Overview
- 5 Tides chart
- 7 Currents
- 10 Sun/moon chart
- 11 Tide station selection
- 12 Calendar

OVERVIEW

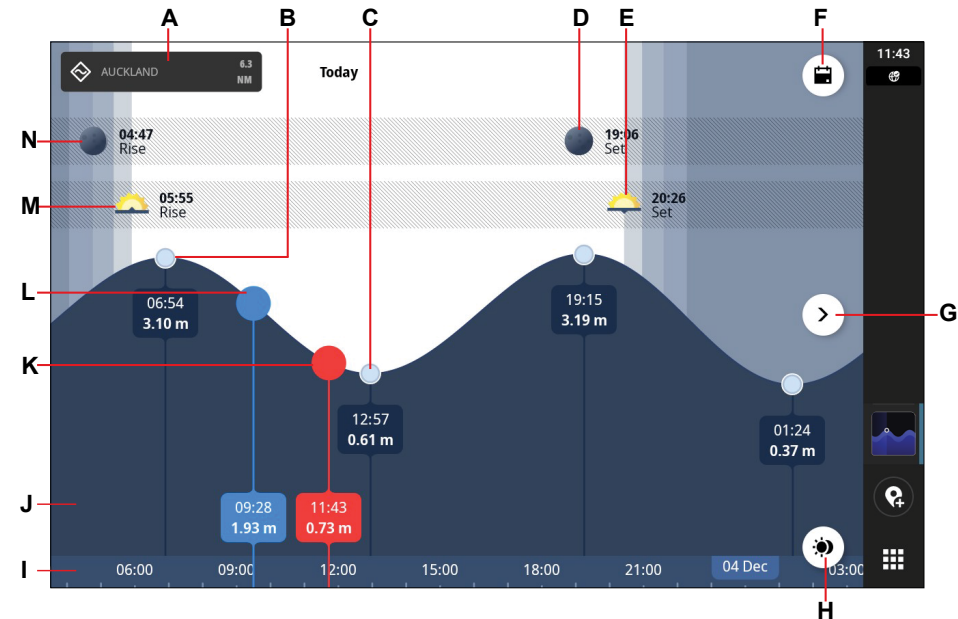
The Tides app helps you plan a day out on the water.
It provides solar, lunar, tides and currents information from a tide station of your choice.





- 1 Tide station — select to choose from a list of nearby tide stations or find a tide station
- 2 Swipe the screen left/right to move the cursor (in blue) along the timeline
- 3 Select to see sun/moon phase details
- 4 Chart button — select to toggle between sun/moon and tide/current charts.

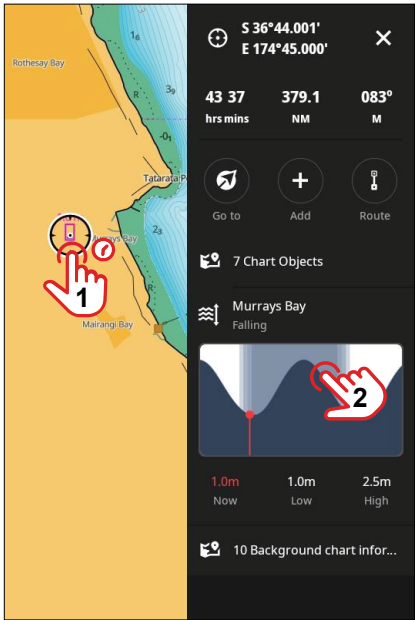
TIDES CHART

The tides chart is a graphical representation of the tide over a timeline.

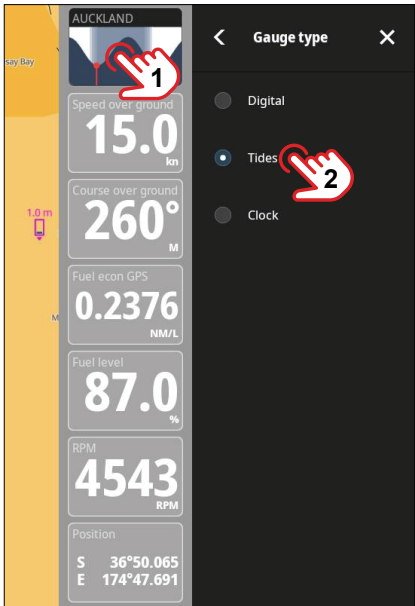


- A Tide or current station selector
- B High tide — indicates the time and height of the high tide
- C Low tide — indicates the time and height of the low tide
- D Moonset at tide station local time
- E Sunset at tide station local time
- F Calendar — select to change the view to a past or future date
- G Reset button — reset view to current time
- H Chart button — select to switch to sun/moon chart
- I Time line
- J Tide graph — peaks indicate high tide, troughs indicate low tide
- K Current position — displays current time on the timeline and tide height
- L Cursor position (moves as per swipe action) — displays cursor time and tide height
- M Sunrise at tide station local time
- N Moonrise at tide station local time

Select and hold (1) on a tide station icon  or  to open the sidebar on the chart. This displays a mini tide graph. Select the mini graph (2) to see details in the Tides app.



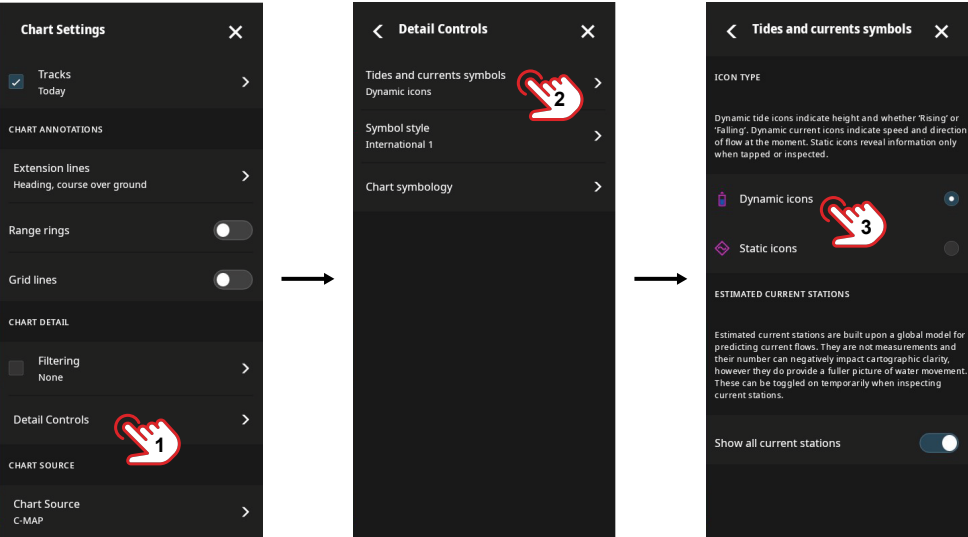
A tides chart can be added as a mini gauge on the instrument bar. Select a gauge on the instrument bar (1), then select **Tides** (2) on the **Gauge type** list.




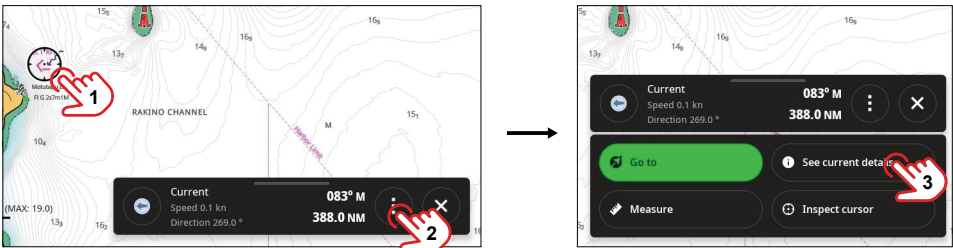
CURRENTS

The currents display is a graphical representation of the currents at a location indicated on the **Chart** app.

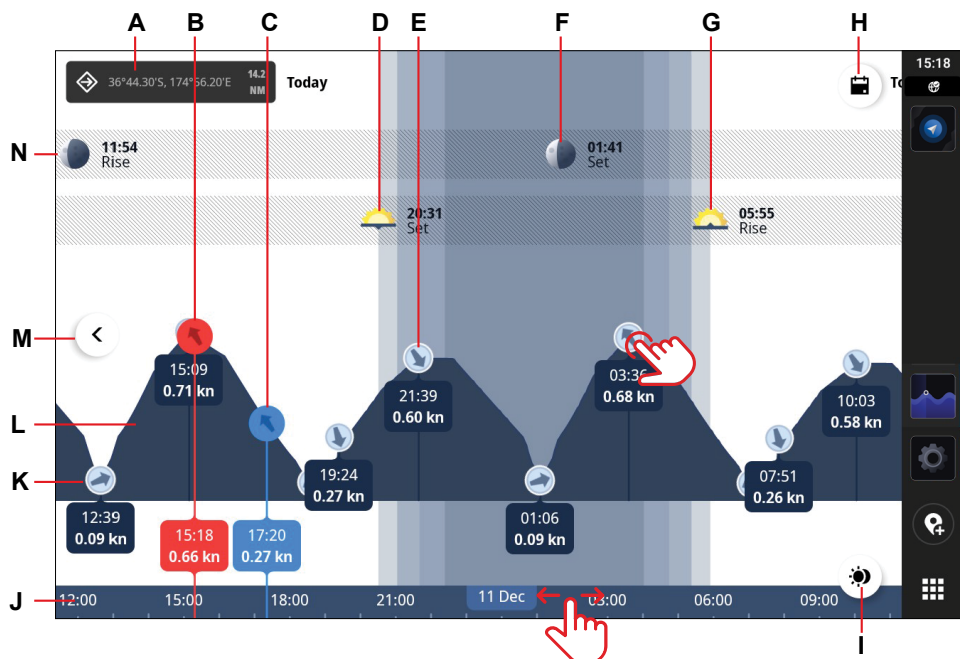
To view the currents graph, go to **Chart app > Settings > Detail Controls > Tides and currents symbols** and select **Dynamic icons**.



Where currents data is available, a currents icon  displays on the chart. Select the currents icon (1), select the more options button (2) and then select **See current details** (3) from the pop-up.

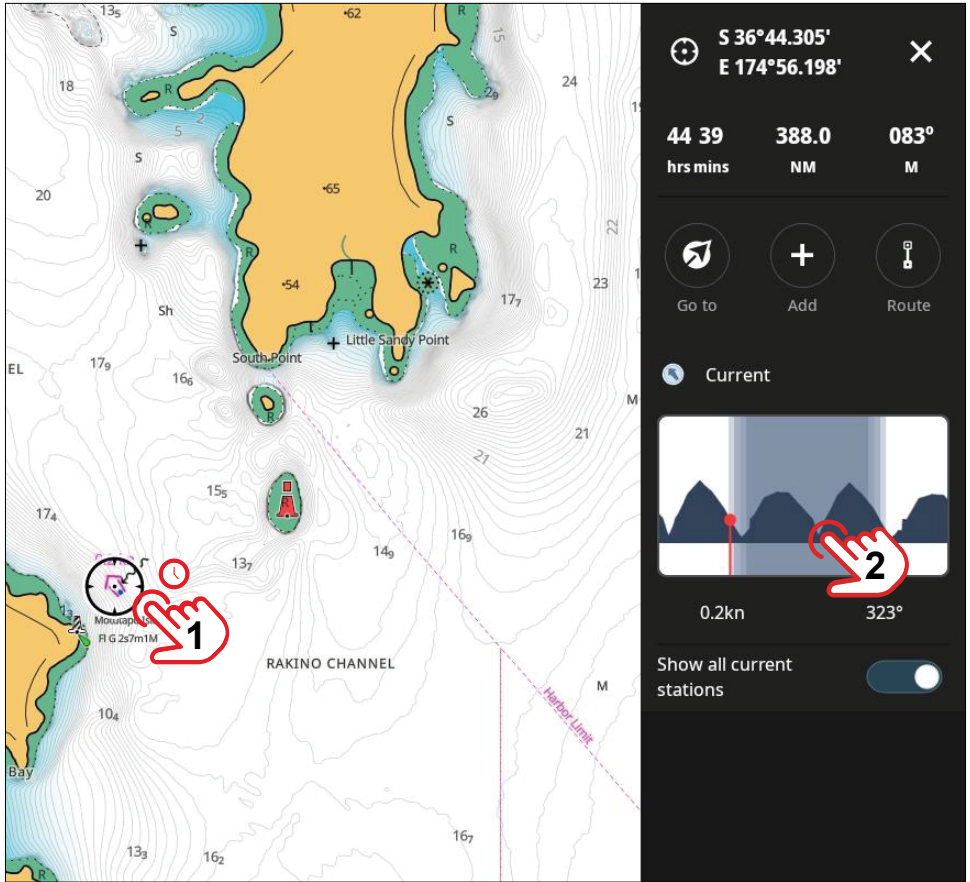


The current details open in the Tides app.



- A Tide or current station selector
- B Current time — displays present time on the timeline and speed of current
- C Cursor (moves as per swipe action) — displays cursor time and speed of current. The arrow's direction indicates the direction of the current
- D Sunset at tide station local time
- E Maximum speed of current — select to display the strength and direction of currents.
- F Moonset at tide station local time
- G Sunrise at tide station local time
- H Calendar — select to change the view to a future date
- I Chart button — select to switch to sun/moon chart
- J Time line — drag left/right to change the cursor position
- K Minimum speed of current — select to view the strength and direction of currents.
- L Currents graph — peaks indicate max current speed, troughs indicate min current speed
- M Reset button — reset view to present time
- N Moonrise at tide station local time

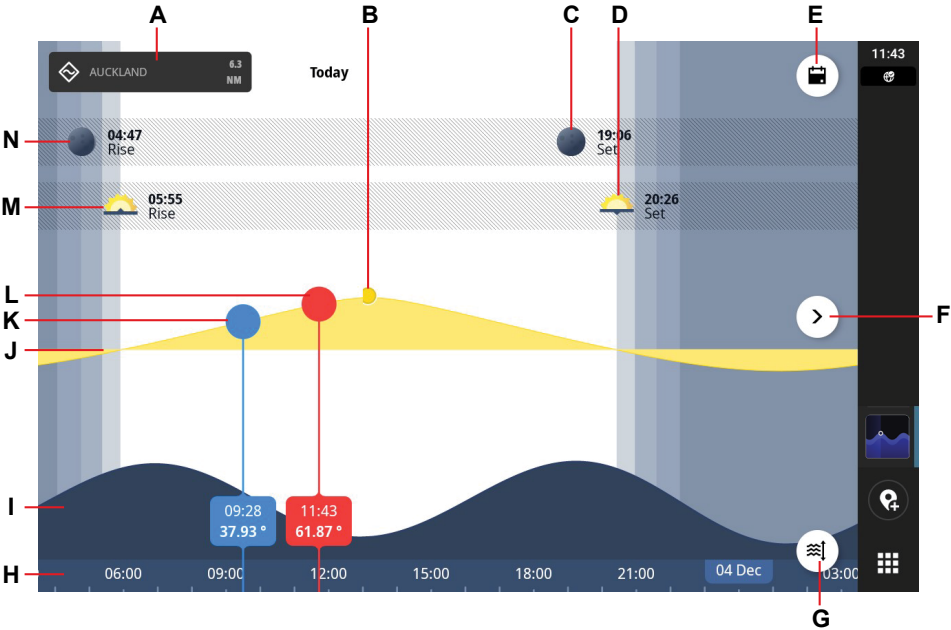
On the **Chart** app, select and hold (1) on a current icon to open the sidebar on the chart. This displays a mini current graph. Select the mini graph (2) to see details in the Tides app.



→ **Note:** The direction of the current arrow indicates the direction of the current.

SUN/MOON CHART

The sun/moon chart is a graphical representation of the sun/moon over a timeline.

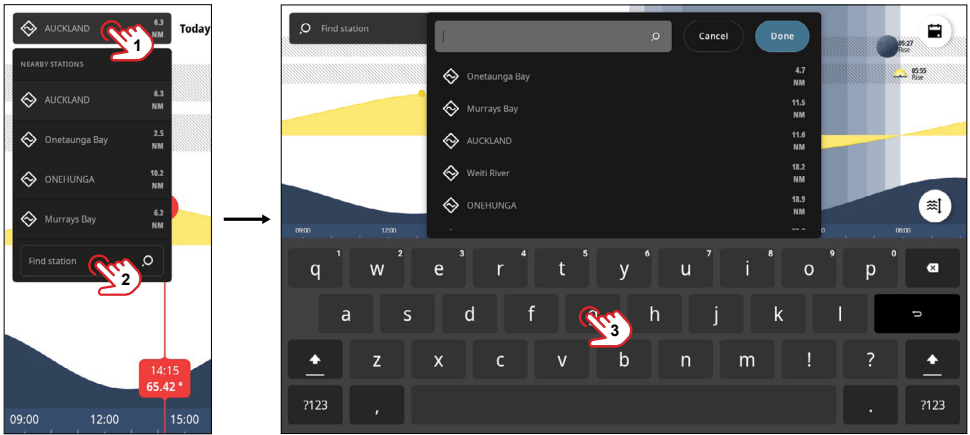


- A Tide or current station selector
- B Midday sun – indicates when the sun will be at its highest point in the day
- C Moonset at tide station local time
- D Sunset at tide station local time
- E Calendar – select to change the view to a future date
- F Reset button – reset view to current time
- G Chart button – select to switch to tide/current chart
- H Time line – drag left/right to change the view
- I Tide graph – peaks indicate high tide, troughs indicate low tide
- J Horizon
- K Cursor sun position (moves as per swipe action) – displays cursor time and sunlight angle
- L Current sun position – displays current time on the timeline and sunlight angle
- M Sunrise at tide station local time
- N Moonrise at tide station local time

TIDE STATION SELECTION

Tidal information used on the Tides app comes from the unit's chart data, either from embedded charts or from a chart card.

Select the tide station selector (1) to choose from nearby tide stations (based on vessel location) or select **Find station** (2) to search for a station (3) Select **Done** when you've found the station you want to use. Both sun/moon and tide/current charts are updated based on your selection.



CALENDAR

You can use the calendar to check tides, sun, and moon for future dates.
Select the calendar icon (1), then select the date (2). Information on both sun/moon and tide charts automatically updates for your chosen date.

