

SIMRAD®

B&G®

SideScan

App Guide

English

Software version: 2.1



NSS® 4 | Zeus® SR

NSX® | Zeus® S

Copyright

©2025 Navico Group. All Rights Reserved. Navico Group is a division of Brunswick Corporation.

Trademarks

®Reg. U.S. Pat. & Tm. Off, and ™ common law marks. Visit www.navico.com/intellectual-property to review the global trademark rights and accreditations for Navico Group and other entities.

- Brunswick® is a trademark of Brunswick Corporation.
- Navico® is a trademark of Navico Group.
- B&G® is a trademark of Navico Group.
- Simrad® is a trademark of Kongsberg Maritime AS, licensed to Navico Group.
- NSS® is a trademark of Navico Group.
- NSX® is a trademark of Navico Group.
- Zeus® is a trademark of Navico Group.
- SD® and microSD® are trademarks of SD-3C, LLC.

Warranty

This product's warranty is supplied as a separate document.

Safety, disclaimer and compliance

This product's safety, disclaimer and compliance statements are supplied as a separate document.

Internet usage

Some features in this product use an internet connection to perform data downloads and uploads. Internet usage via a connected mobile/cell phone internet connection or a pay-per-MB type internet connection may require large data usage. Your service provider may charge you based on the amount of data you transfer. If you are unsure, contact your service provider to confirm rates and restrictions.

More information

Document version: 001

This document was prepared using software version 2.1.

Features described in this document may vary from your unit due to connected devices, settings, brand, and continuous software development.

For the latest version of this document in supported languages, and other related documentation, visit www.simrad-yachting.com/downloads or www.bandg.com/downloads.

Contact us

For product support and service information, visit www.simrad-yachting.com/contact-us or www.bandg.com/contact-us.

CONTENTS

- 4 Overview**
- 4 Requirements**
- 4 SideScan screen**
- 5 SideScan image**
- 6 Source selection and Play/pause pinging**
- 7 Zoom image**
- 8 cursor position details**
 - 8 Measure
 - 9 Add waypoint
 - 9 Navigate to a waypoint
- 10 Viewing history**
- 11 Recording SideScan**
- 12 Recording settings
- 13 SideScan settings**
 - 13 Range
 - 13 Frequency
 - 14 Contrast
 - 14 Palette
 - 14 TVG
 - 14 Range lines
 - 14 View
 - 14 Flip view
 - 15 Reset to default

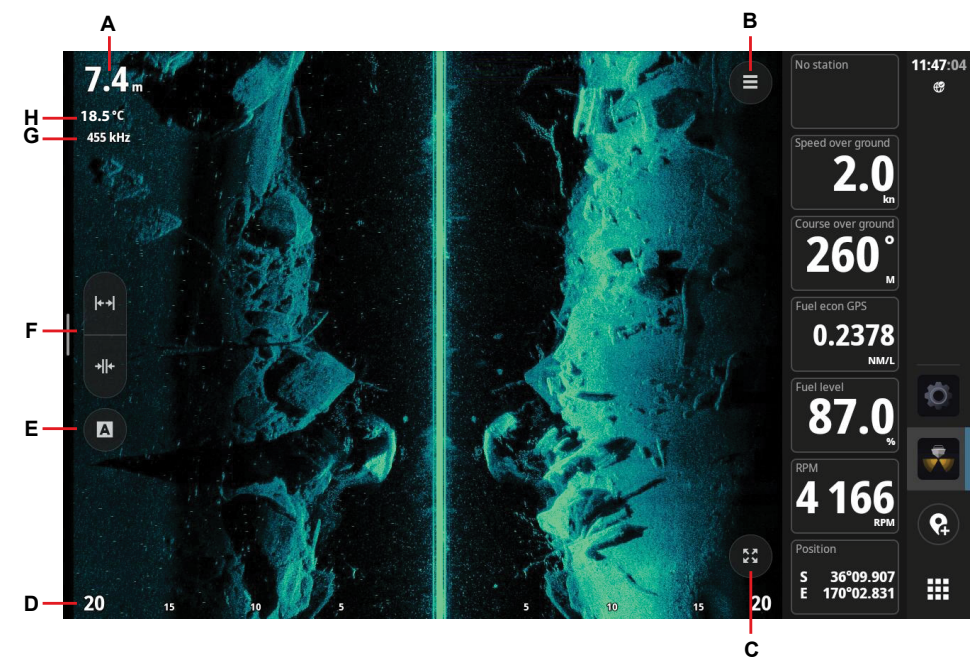
OVERVIEW

The SideScan app displays a high-detail image of the seabed on both sides of your vessel. It detects objects under the water by emitting and receiving sound pulses from a transducer and then displays those objects on your multi-function display.

REQUIREMENTS

To use the app, a SideScan-compatible transducer must be connected to the system. This guide describes features and options for a variety of supported transducers. The features available to you depend on the transducer connected to your system.

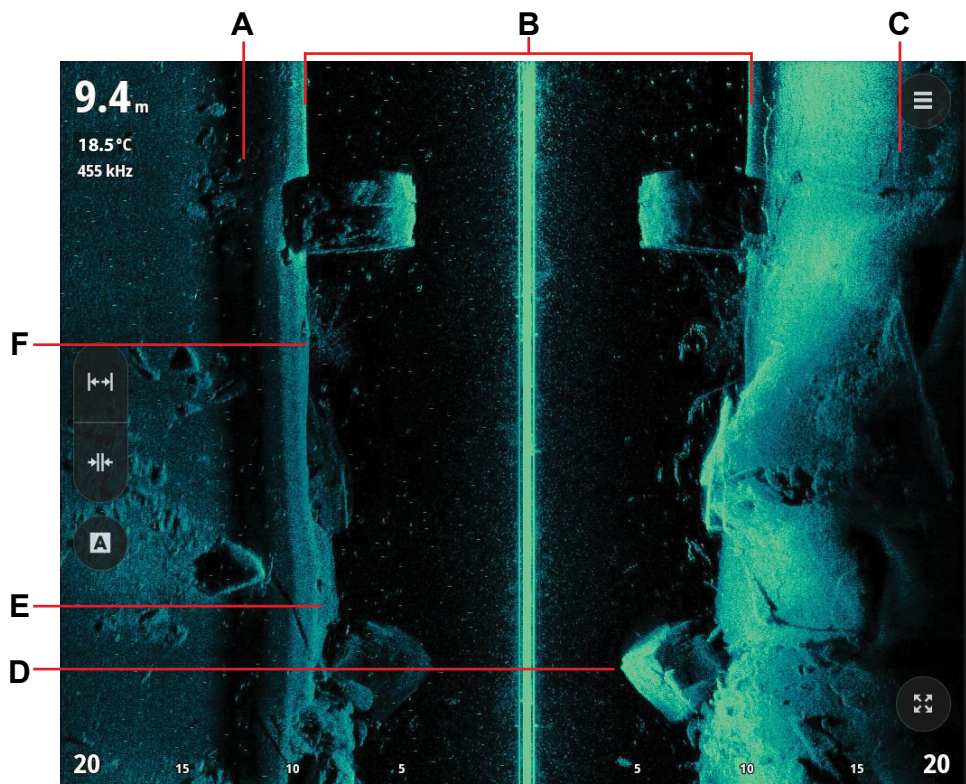
SIDESCAN SCREEN



- A** Depth — depth to bottom from either the water line, bottom of the boat or the custom depth offset point. Select repeatedly to adjust the font size.
- B** SideScan settings button
- C** Full screen button
- D** Range scale
- E** Auto range button
- F** Manual range controls
- G** Transducer frequency
- H** Temperature — water temperature at transducer.

SIDESCAN IMAGE

The following is an example of a SideScan image.

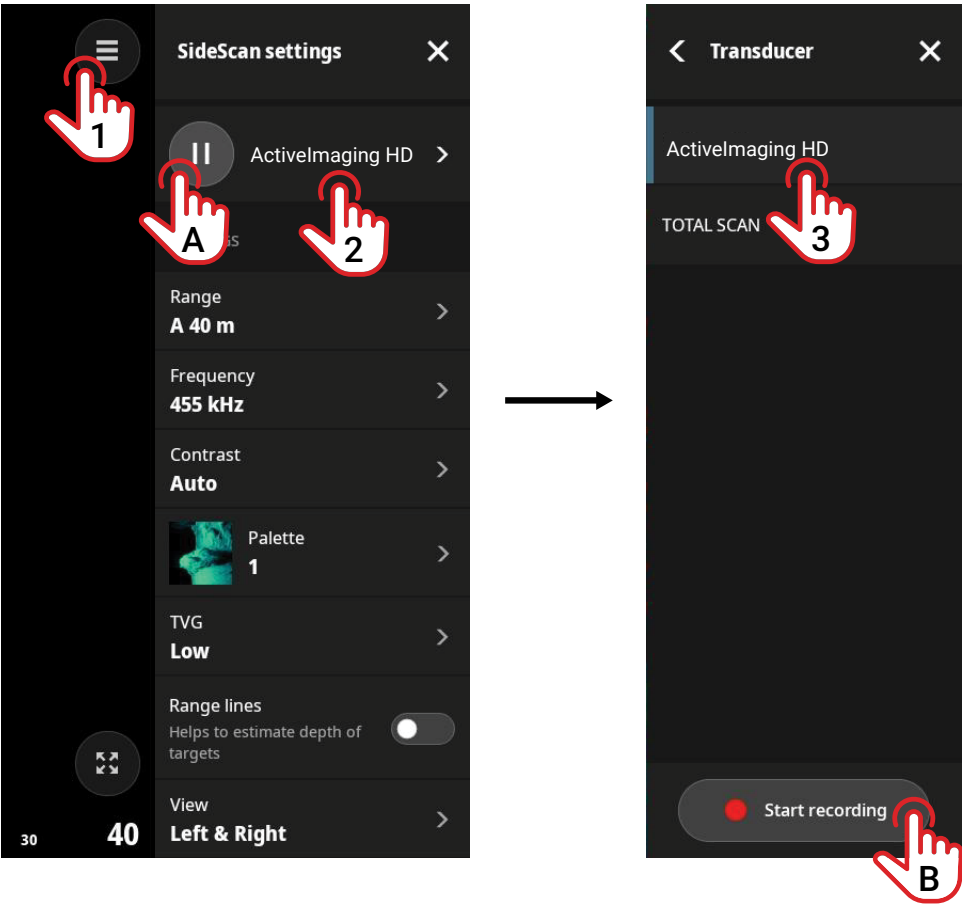


- A Left-side bottom
- B Center water column
- C Right-side bottom
- D Structure on bottom (right-side)
- E Structure on bottom (left-side)
- F Brush pile on bottom

SOURCE SELECTION AND PLAY/PAUSE PINGING

You can select a transducer connected directly to your display unit or one connected to your network.

Select the settings menu button (1), select the transducer (2), select any available transducers (3).



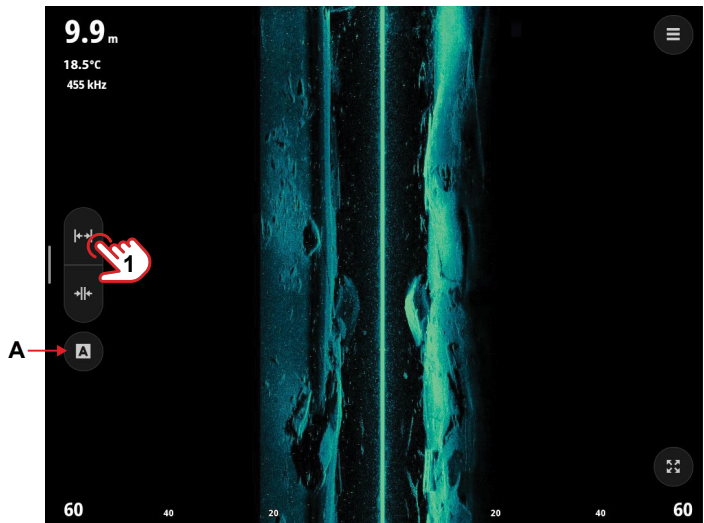
Select the pause button (A) to pause the transducer from transmitting. The system does not collect data when the transducer is paused.

- **Note:** We recommend you pause the transducer when it is out of the water or when it is not in use for extended periods of time.
- **Note:** Select (B) to start/stop recording from the selected transducer.

ZOOM IMAGE

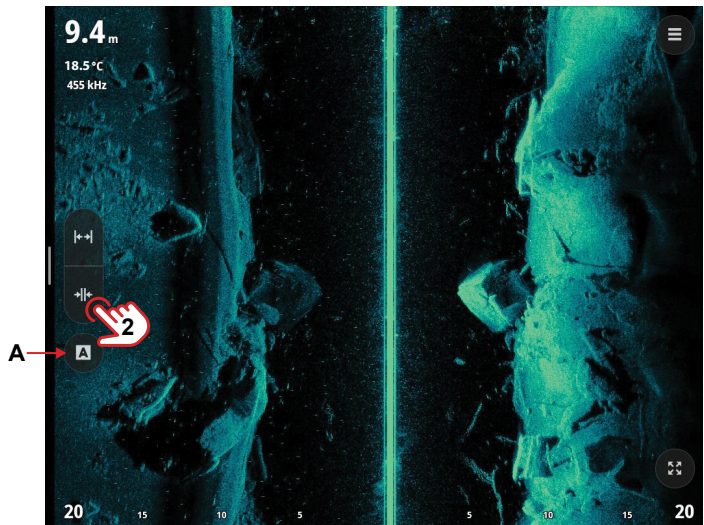
A change in range causes the image to zoom in or out. The range represents the distance to the left and right of the screen's center.

Select the increase range button (1) to zoom out. The updated zoom level shows on the range scale at the bottom of the screen.



Select the decrease range button (2) to zoom into the image.

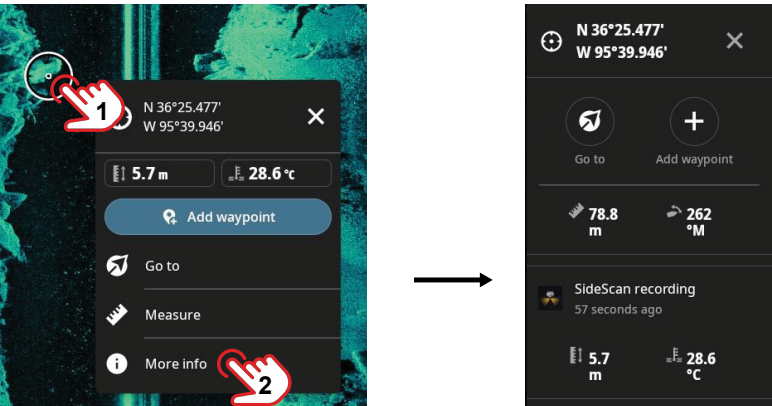
Select the auto range button (A) to let the system determine the best view for the water depth.



→ **Note:** The SideScan range settings are also available on the settings menu.

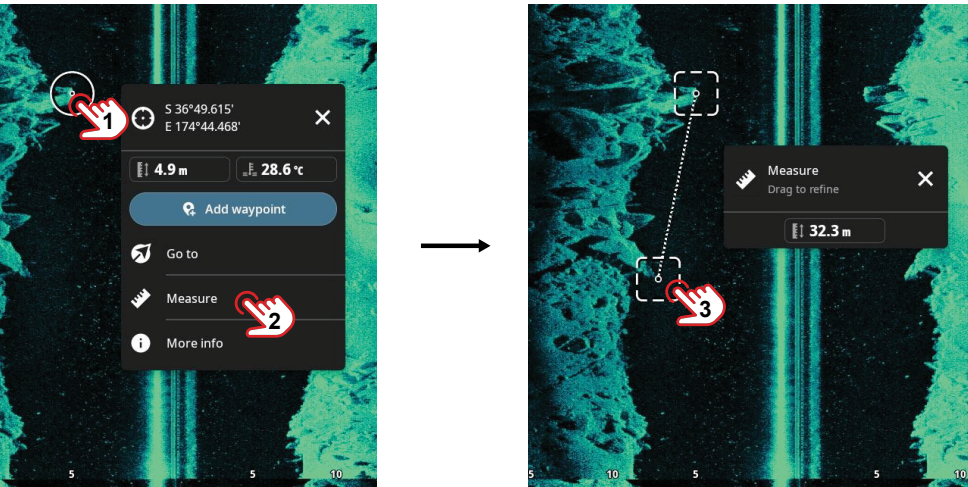
CURSOR POSITION DETAILS

When you select a location (1) on the screen, basic information like location, depth at the cursor position, and water temperature displays in a pop-up. To see detailed information select **More info** (2).



Measure

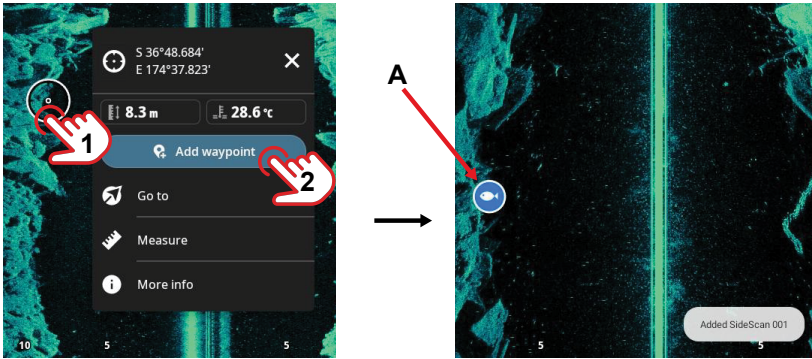
Use this tool to measure the distance between two points on the image. Select a point you want to start measuring from (1), select **Measure** (2), then select the end point (3). Drag the end point to another position on the screen to refine the measurement.



➔ *Note: You can also select another position on the screen, without dragging current end point.*

Add waypoint

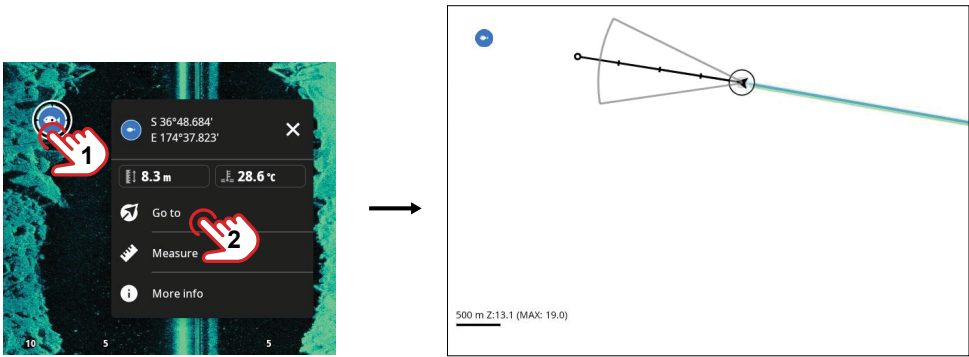
Select a position on the screen, and then select **Add waypoint (2)** on the pop-up. A waypoint marker (A) is added with a fish icon at the cursor location.



Navigate to a waypoint

You can navigate to a waypoint by positioning the cursor on a waypoint or other location (1), then select **Go to (2)**.

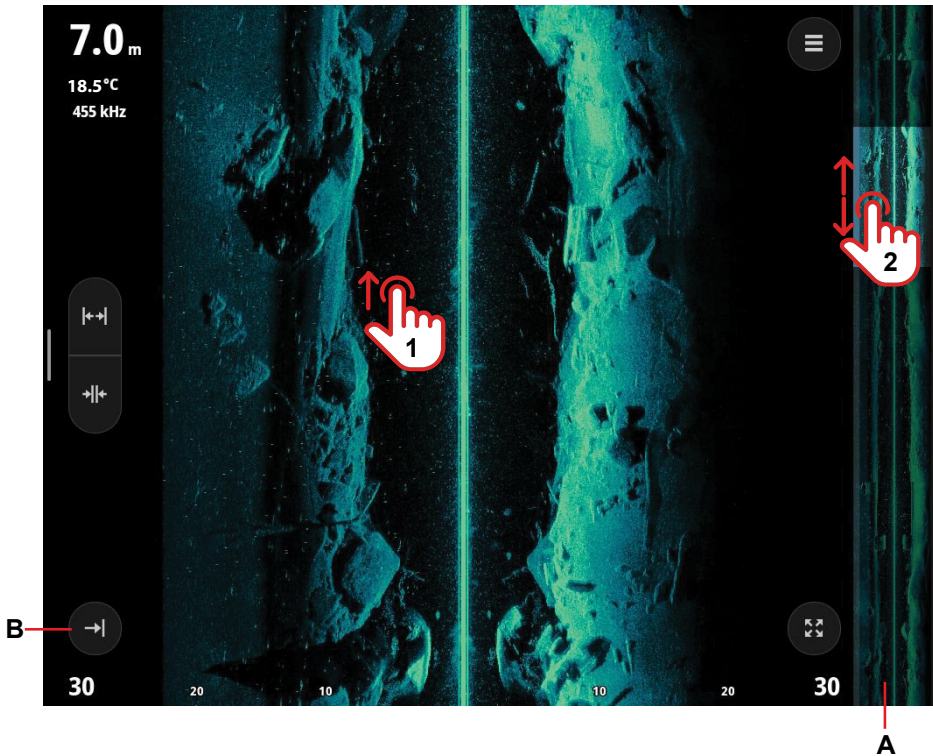
This loads the **Chart** app and auto-routing to the waypoint starts.



➔ *Note: Autorouting will only start if the vessel set up is complete and autorouting information is available.*

VIEWING HISTORY

When the transducer is transmitting, the image moves from the top to the bottom of the screen. The top of the image shows the most current soundings and everything below that is historical.



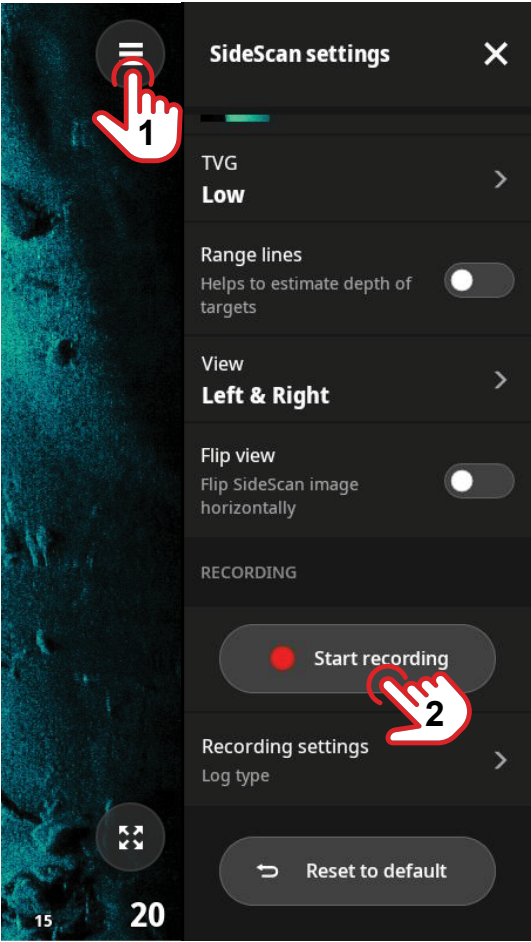
Tap and drag up the screen (1) to view sounding history. This pauses movement of the main image and displays the history bar (A) on the right side of the screen.

The history bar continues to move and highlights the historical area of the sounding you see on the main image. To view other areas of history, drag the highlighted area (2) on the history bar to the top or bottom.

Select the return button (B) to return to the current sounding's image.

RECORDING SIDESCAN

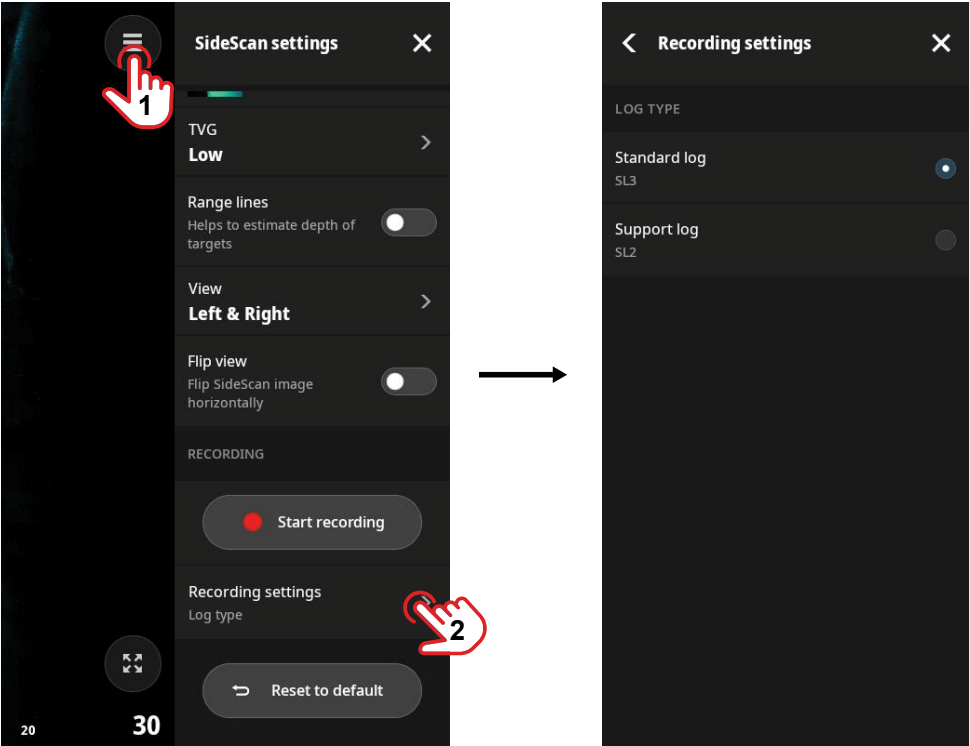
To create a SideScan recording, navigate to the settings menu (1), select **Start recording** (2). When selected, the button changes to **Stop recording**.



- **Note:** A red dot flashes to indicate recording is active.
- **Note:** To save recordings, insert either a microSD® card or USB storage device (9" and 12" displays) into the unit. Recordings cannot be saved to the unit's internal storage.

Recording settings

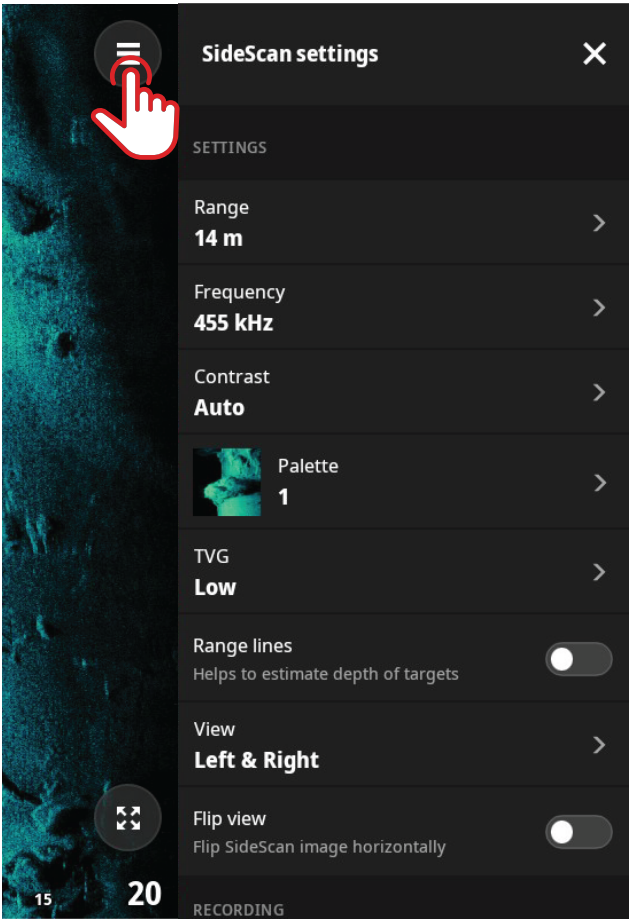
On the settings menu, select **Recording settings** to specify the log file type.



SIDESCAN SETTINGS

Use the SideScan settings panel to configure SideScan options and settings.

→ *Note: Only some of the options are described in this guide as these will vary depending on the hardware connected to the unit.*



Range

The range setting determines the distance to the left and right of the screen's center. The lower the range setting, the more magnified the bottom is on the screen.

Frequency

Two frequencies are supported. A higher frequency (800 kHz) provides the sharpest image without sacrificing range, while a lower frequency (455 kHz) can be used in deeper waters or for extended range capabilities.

Contrast

Determines the brightness ratio between the light and dark areas of the screen.

→ **Note:** *We recommend you use the auto contrast option.*

Palette

Select between several display palettes optimized for a variety of fishing conditions. Choose a color palette to suit your requirements from 9 presets, or create your own custom color palette.

Select **Add +** to create a custom color palette. Turn on **Manage palettes** to view, create, and manage (edit, rename, import, export) all custom color palettes.

TVG

Wave action, boat wakes and temperature inversions can cause on-screen clutter near the surface. Low TVG (Time Variable Gain) shows more detail on the screen, whereas increasing it will reduce surface clutter.

→ **Note:** *Some targets may not be displayed if the TVG is set too high.*

Range lines

Turn on range lines to display an overlay of lines. These help in target distance estimation.

View

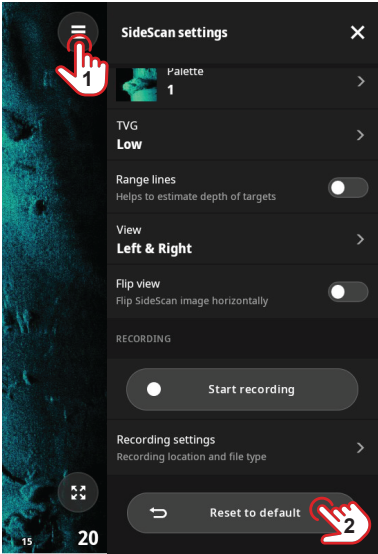
Use this setting to view left, right or both sides of the SideScan beam.

Flip view

Turn on to flip the SideScan image horizontally.

Reset to default

Select to restore the SideScan settings to their factory-supplied defaults.



→ *Note: You cannot reverse a factory reset.*

