

Recon™ Stow/Deploy Release Lever

⚠ WARNING: This product must be installed in accordance with the instructions provided. Failure to do so could result in personal injury, damage to your vessel and/or poor product performance.

⚠ WARNING: Performing service or maintenance without first disconnecting the battery can cause product damage, personal injury, or death due to fire, explosion, electrical shock, or unexpected motor starting. Always disconnect the battery cables from the battery before maintaining, servicing, installing, or removing motor components.

In the box

- 1x Recon™ stow/deploy release lever
- 2x T15 Torx® screws

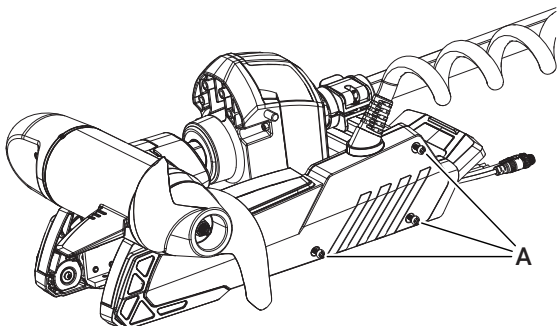
Tools needed

- #2 Phillips screwdriver
- T15 Torx® screwdriver
- Torque wrench

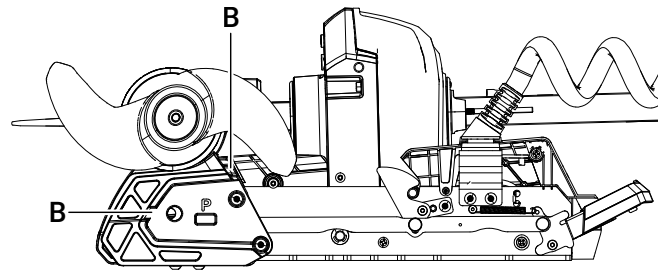
Installation

To remove the existing stow/deploy release lever:

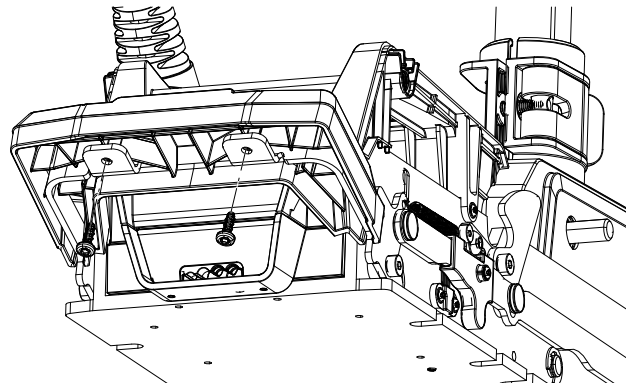
- 1 Disconnect the trolling motor power cable from the battery (or unplug the power cable if using a plug and receptacle).
 - 2 While your trolling motor is stowed or deployed, use a #2 Phillips screwdriver to loosen the side plate screws on both sides of the mount (A).
- **Note:** The screws are retained by washers.



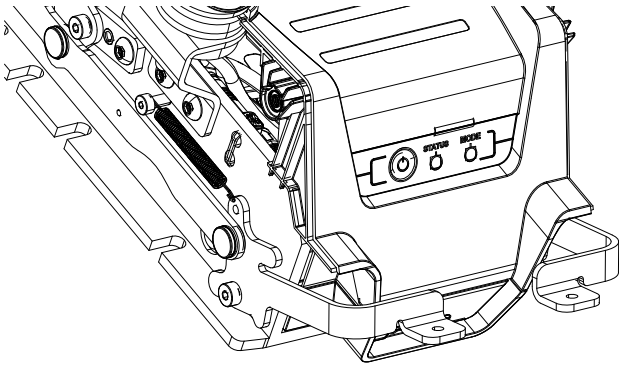
- 3 Remove the side plates, taking care not to damage the locating tabs as they leave their slots (B).



- 4 If the trolling motor is:
 - mounted to a quick release bracket, dismount it.
 - bolted directly to the deck, unbolt it.
- **Note:** It is possible, but difficult, to remove the stow/deploy release lever while the trolling motor is attached to the boat.
- 5 Use a T15 Torx® screwdriver to remove the two screws from the underside of the stow/deploy release lever.

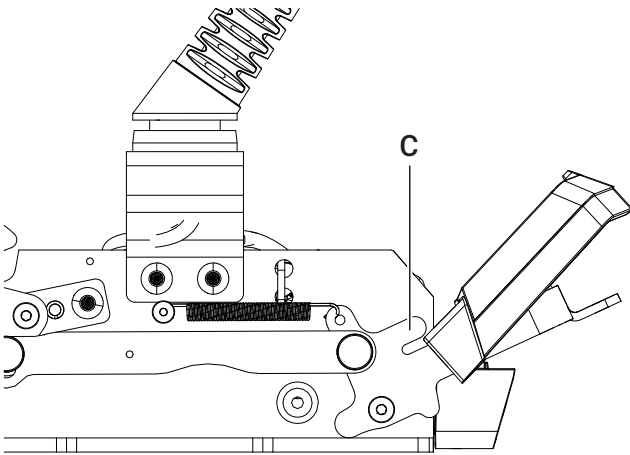


- 6 Lift the lever off the latch assembly.

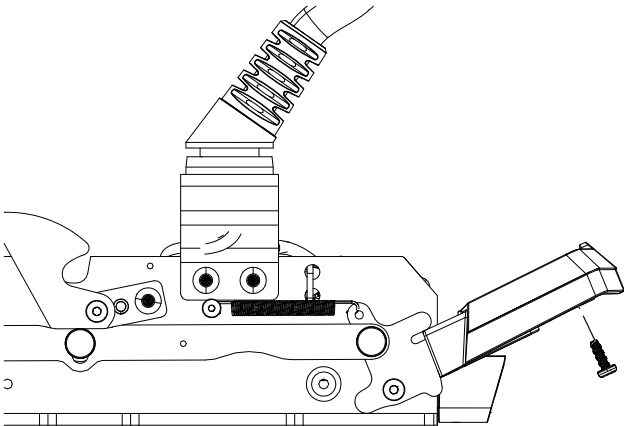


To attach the new stow/deploy release lever:

- 7 Slide the new stow/deploy release lever under the tabs on either side of the release bracket (C).



- 8 Rotate the stow/deploy release lever onto the release brackets and align the screw holes.



- 9 Secure using the two supplied screws. Tighten to torque 2.15 Nm (19 in-lb).
- 10 Install the side plates back onto the mount, aligning the locating tabs and positioning the port side around the strain relief.
- 11 Re-fasten the side plate screws and tighten to torque 1.69 Nm (15 in-lb).