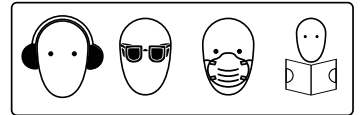


Recon™ Nose Cone



⚠ WARNING: This product must be installed in accordance with the instructions provided. Failure to do so could result in personal injury, damage to your vessel and/or poor product performance.

⚠ WARNING: Performing service or maintenance without first disconnecting the battery can cause product damage, personal injury, or death due to fire, explosion, electrical shock, or unexpected motor starting. Always disconnect the battery cables from the battery before maintaining, servicing, installing, or removing motor components.

In the box

- Recon™ nose cone
- 1x nose cone cap
- 1x nose cone bolt
- 1x nose cone bolt O-ring
- 1x nose cone O-ring
- 1x lower unit O-ring

Tools needed

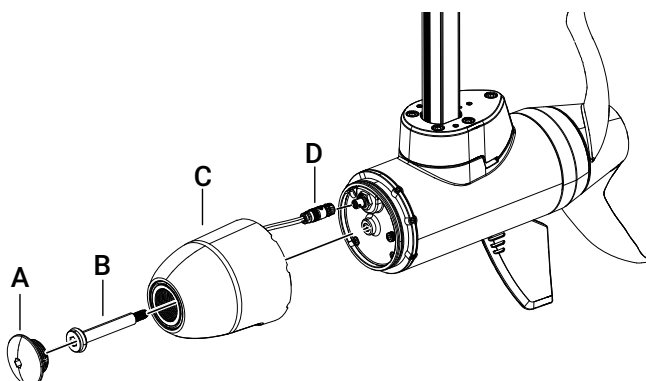
- 8 mm (5/16 in) Allen key
- Torque wrench

Installation

→ **Note:** The following procedure can be used for replacing empty Recon™ nose cones, Recon™ HDI nose cones and Recon™ Active Imaging 3-in-1 nose cones.

To remove the existing nose cone from your Recon™ trolling motor:

- 1 Disconnect the power cables from the battery.
 - 2 Unscrew the nose cone cap (A), followed by the nose cone bolt (B).
 - 3 Gently detach the nose cone (C) from the lower unit.
 - 4 If the nose cone contains a transducer, rotate the connector nut on the sonar cable anticlockwise to unlock and detach the cable (D).
- **Note:** Make sure you don't loosen the plastic nut behind the 9-pin connector on the lower unit.



- 5 Check the O-rings on the nose cone bolt, Recon™ nose cone and Recon™ lower unit to make sure they are in usable condition and properly installed. If they show damage (cracks, rough edges, voids or discoloration), discard and replace with the supplied O-rings.



To attach the new nose cone:

- 6 If the new nose cone contains a transducer, align the arrow on the sonar cable connector (E) with the mark on the socket. Connect the sonar cable and rotate the connector nut until locked (a quarter turn).
 - 7 Attach the nose cone (F) to the lower unit, underside aligned with the skag (G).
 - 8 Insert the nose cone bolt (B) and secure using a 8 mm (5/16 in) Allen key. Tighten to torque 7.5 Nm (66.4 in-lb).
 - 9 Screw on the nose cone cap (A) and tighten to torque 3.5 Nm (31 in-lb).
- **Note:** A new nose cone cap is supplied if your existing cap is damaged.

