



MOB

App Guide

English

Software version: 2.1



NSS® 4 | Zeus® SR

NSX® | Zeus® S

Copyright

©2025 Navico Group. All Rights Reserved. Navico Group is a division of Brunswick Corporation.

Trademarks

®Reg. U.S. Pat. & Tm. Off, and ™ common law marks. Visit www.navico.com/intellectual-property to review the global trademark rights and accreditations for Navico Group and other entities.

- Brunswick® is a trademark of Brunswick Corporation.
- Navico® is a trademark of Navico Group.
- B&G® is a trademark of Navico Group.
- Simrad® is a trademark of Kongsberg Maritime AS, licensed to Navico Group.
- NSS® is a trademark of Navico Group.
- NSX® is a trademark of Navico Group.
- Zeus® is a trademark of Navico Group.

Warranty

This product's warranty is supplied as a separate document.

Safety, disclaimer and compliance

This product's safety, disclaimer and compliance statements are supplied as a separate document.

Internet usage

Some features in this product use an internet connection to perform data downloads and uploads. Internet usage via a connected mobile/cell phone internet connection or a pay-per-MB type internet connection may require large data usage. Your service provider may charge you based on the amount of data you transfer. If you are unsure, contact your service provider to confirm rates and restrictions.

More information

Document version: 001

This document was prepared using software version 2.1.

Features described in this document may vary from your unit due to connected devices, settings, brand, and continuous software development.

For the latest version of this document in supported languages, and other related documentation, visit www.simrad-yachting.com/downloads or www.bandg.com/downloads.

Contact us

For product support and service information, visit www.simrad-yachting.com/contact-us or www.bandg.com/contact-us.

CONTENTS

- 4 Overview
- 4 MOB screen
- 5 Seek help panel
- 6 Navigate to MOB marker
- 8 MOB Marker navigation details
- 9 Ignored MOB list
- 10 Settings

OVERVIEW

Use the crew overboard (MOB) app for emergency situations which include, but are not limited to, a person falling overboard, an incident involving another vessel, or a vessel grounding.

→ **Note:** MOB events are shared over the network.

MOB SCREEN

To open the app, select **MOB** on the home screen. When you start the app, a MOB marker is immediately placed at your current vessel location and aids to navigation start automatically.



A MOB settings — select to access app settings.

B Seek help button — select to open the **Seek help** panel and follow the instructions to respond to the emergency.

→ **Note:** Vessel details must be entered at the time of setup.

C MOB — select to mark a MOB marker at the current vessel location.

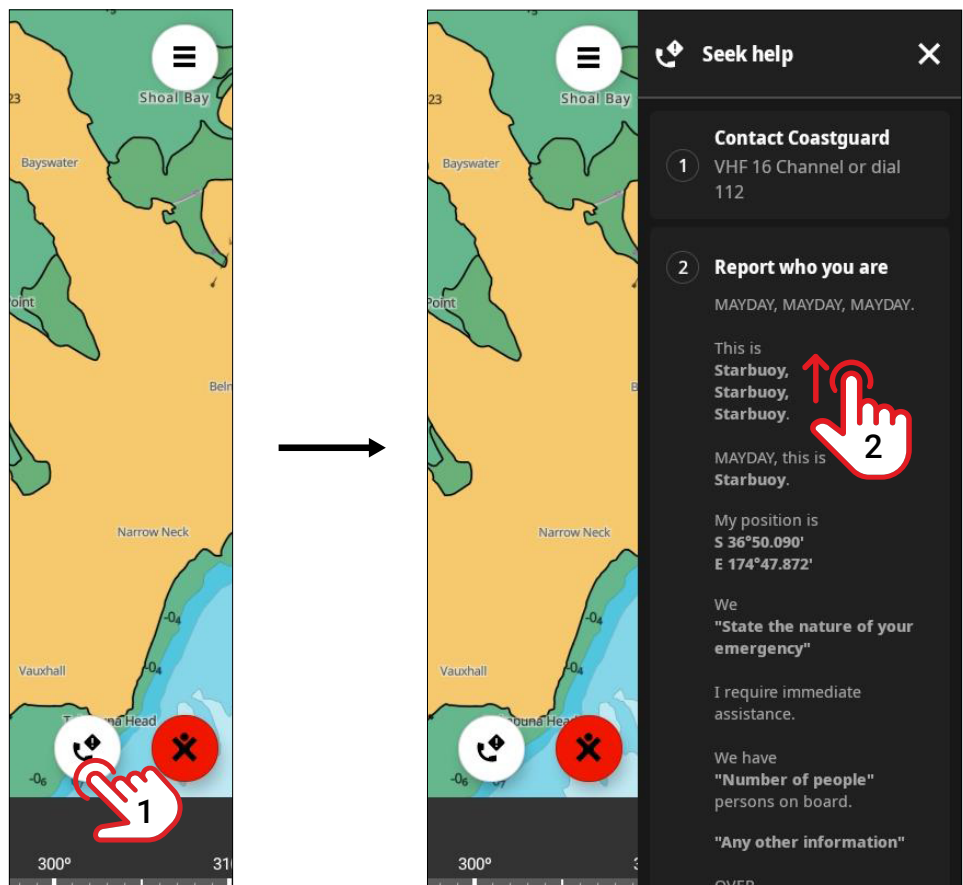
D Compass turn indicator — displays the heading, course change required, MOB bearing, and MOB marker.

E Your vessel

SEEK HELP PANEL

When you place a MOB marker on the screen, you may need to contact relevant authorities over VHF radio to advise of your vessel and position details.

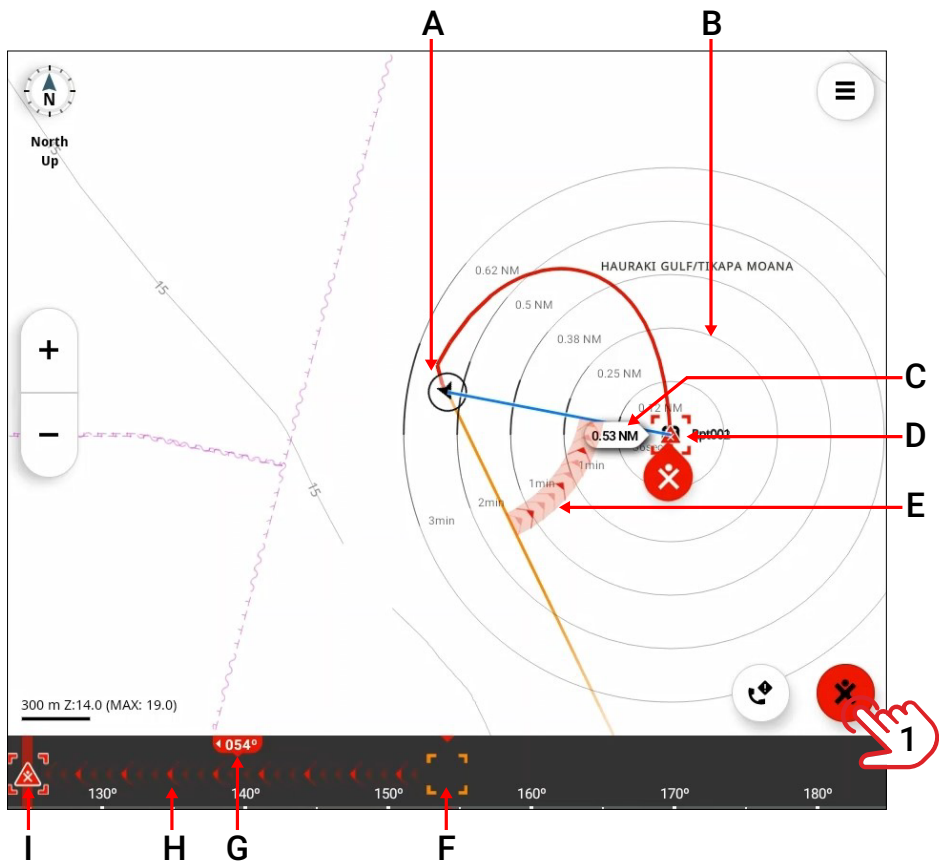
Select the seek help button (1) to open the **Seek help** panel. The information necessary for assistance is clearly presented for you to read out. Scroll down (2) on the panel to see all available instructions.



→ **Note:** The seek help panel is not a substitute for proper training and prudent seamanship.

NAVIGATE TO MOB MARKER

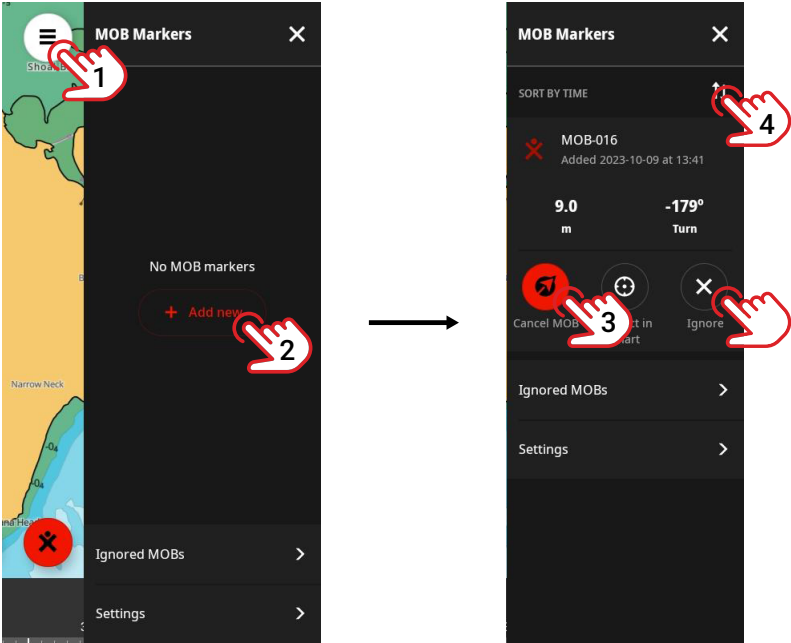
When you place a MOB marker (1) on the screen, the app immediately displays steering aids to safely and quickly navigate back to the MOB waypoint.



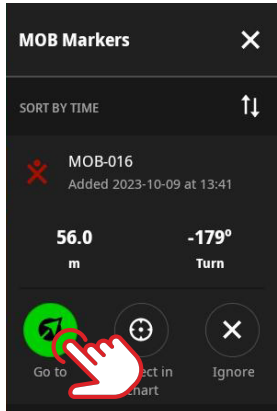
- A Your vessel
 - B Range distance rings
 - C Distance to MOB marker
 - D MOB marker
 - E Direction to steer vessel
 - F Current heading
 - G Degree and direction of course change required to reach MOB marker
 - H MOB bearing and direction to steer vessel
 - I MOB bearing marker — displays when MOB is on a bearing less than 30 degrees
- You can also navigate to a recent or historic MOB marker.

➔ **Note:** If you have added a MOB marker, navigation begins automatically.

You can add a MOB marker from the settings. Select settings (1) then select **Add new** (2) to add a MOB marker, navigation begins immediately. If you have multiple markers in your list, you can sort them (4) by time or proximity (to your current vessel position).



Select **Cancel MOB** (3) to cancel the navigation and the marker continues to display on the **MOB markers** list. Select **Go to** to start navigation towards a MOB marker.

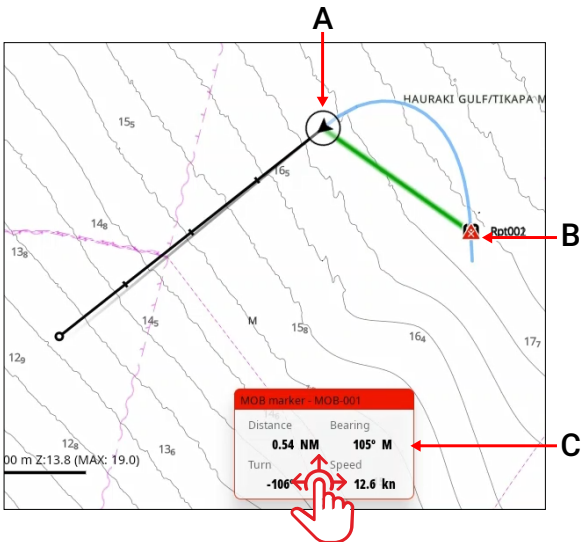
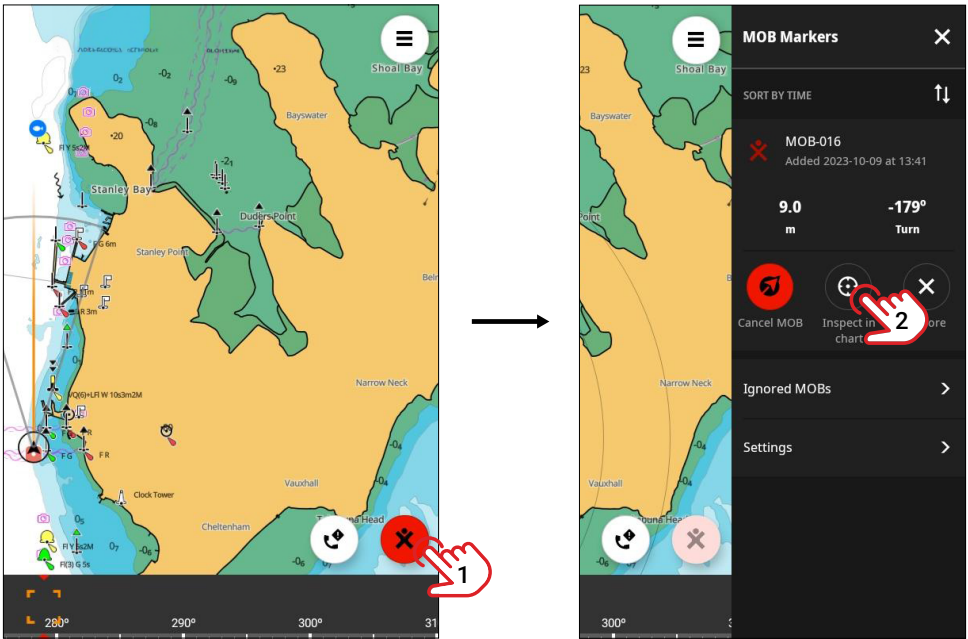


You can also select **Ignore** to ignore the MOB marker, the marker is added to the **Ignored MOB's** list and removed from the **MOB markers** list.

MOB MARKER NAVIGATION DETAILS

While brief position details display on the MOB app, you can also check the MOB marker navigation details in the **Chart** app.

Select the MOB button (1), then select **Inspect in chart** (2). This opens the Chart app with the MOB marker navigation details.

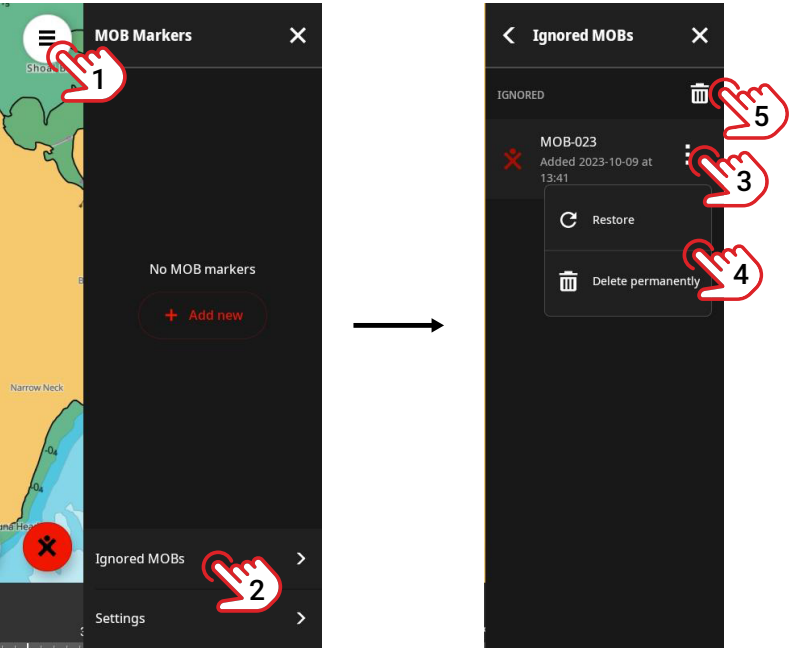


- A Your vessel
- B MOB marker
- C MOB navigation data widget – touch and drag to reposition it on the screen

IGNORED MOB LIST

All ignored MOB markers are added to the **Ignored MOB**s list.

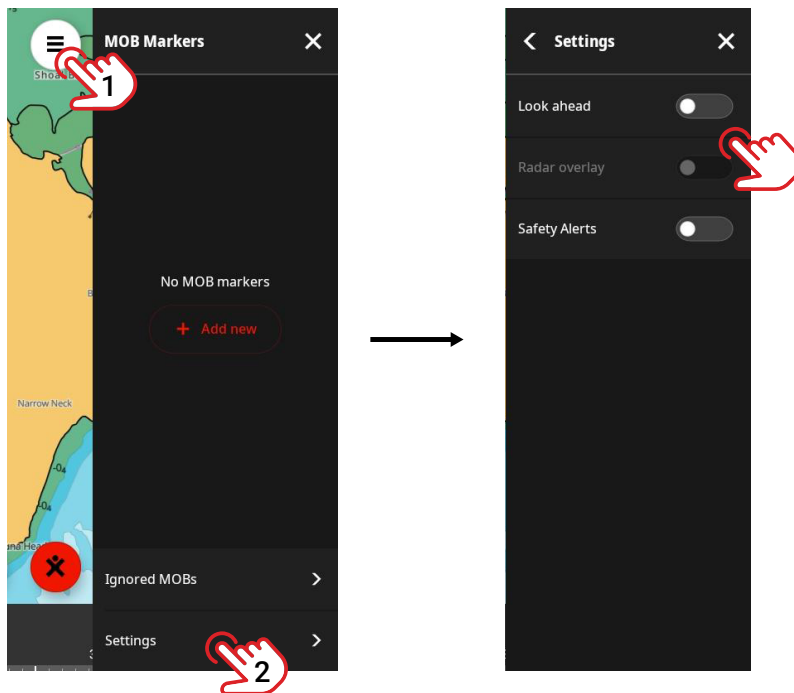
To view the ignored MOB

s list, select the settings menu (1) then select **Ignored MOB**s (2). Select the MOB marker options (3) to restore or delete (4) the marker permanently. Select **Restore** to move the marker back to the **MOB markers** list, from there you can navigate to the MOB marker position.

→ **Note:** Select the trashcan icon (5) to permanently delete all MOB markers.

SETTINGS

To adjust the MOB app settings, select the settings menu (1) then select **Settings** (2).



The following settings can be turned on/off:

- **Look ahead** — select to display a larger area of the chart in front of the vessel.
- **Radar overlay** — select to overlay a transmitting radar PPI over the MOB screen. This feature assists in low light conditions.
 - *Note: A compatible radar system must be correctly installed and commissioned.*
- **Safety alerts** — select to highlight dangerous areas sourced from available chart data.

