

Instruments

App Guide

English

Software version: 2.1



NSS® 4 | Zeus® SR

NSX® | Zeus® S

Copyright

©2025 Navico Group. All Rights Reserved. Navico Group is a division of Brunswick Corporation.

Trademarks

®Reg. U.S. Pat. & Tm. Off, and ™ common law marks. Visit www.navico.com/intellectual-property to review the global trademark rights and accreditations for Navico Group and other entities.

- Brunswick® is a trademark of Brunswick Corporation.
- Navico® is a trademark of Navico Group.
- B&G® is a trademark of Navico Group.
- Simrad® is a trademark of Kongsberg Maritime AS, licensed to Navico Group.
- NSS® is a trademark of Navico Group.
- NSX® is a trademark of Navico Group.
- SailSteer™ is a trademark of Navico Group.
- Zeus® is a trademark of Navico Group.

Warranty

This product's warranty is supplied as a separate document.

Safety, disclaimer and compliance

This product's safety, disclaimer and compliance statements are supplied as a separate document.

Internet usage

Some features in this product use an internet connection to perform data downloads and uploads. Internet usage via a connected mobile/cell phone internet connection or a pay-per-MB type internet connection may require large data usage. Your service provider may charge you based on the amount of data you transfer. If you are unsure, contact your service provider to confirm rates and restrictions.

More information

Document version: 001

This document was prepared using software version 2.1.

Features described in this document may vary from your unit due to connected devices, settings, brand, and continuous software development.

For the latest version of this document in supported languages, and other related documentation, visit www.simrad-yachting.com/downloads or www.bandg.com/downloads.

Contact us

For product support and service information, visit www.simrad-yachting.com/contact-us or www.bandg.com/contact-us.

CONTENTS

- 4 Overview**
- 4 Instrument dashboards**
- 5 Dashboard selection**
- 6 Create a new dashboard**
 - 6 Clone a dashboard
 - 7 Custom dashboard options
 - 8 Gauge attributes
- 9 Edit a dashboard**
 - 9 Edit your own dashboards
- 10 Gauge settings**
- 11 SailSteer**
- 13 Time and Wind plots**
 - 13 Time plot
 - 14 Wind plot

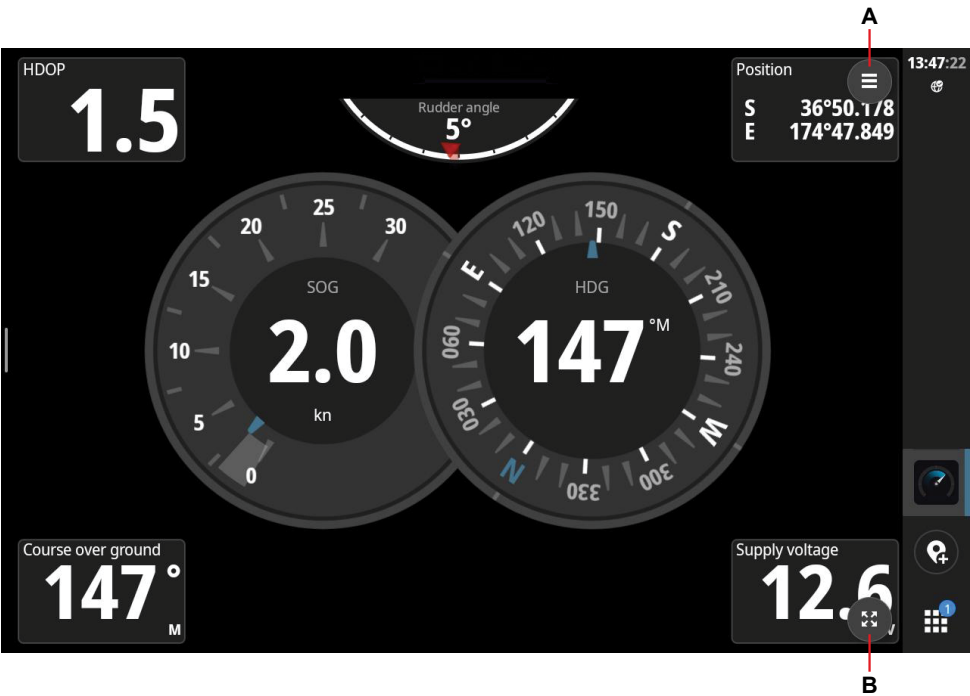
OVERVIEW

The Instruments app can be used to view data in dashboards. You can create your own dashboards or use predefined dashboards.

The data that can be shown in the dashboards depends on MFD brand and the equipment connected to your system.

INSTRUMENT DASHBOARDS

A dashboard consists of one or more analog, digital, or bar gauges.

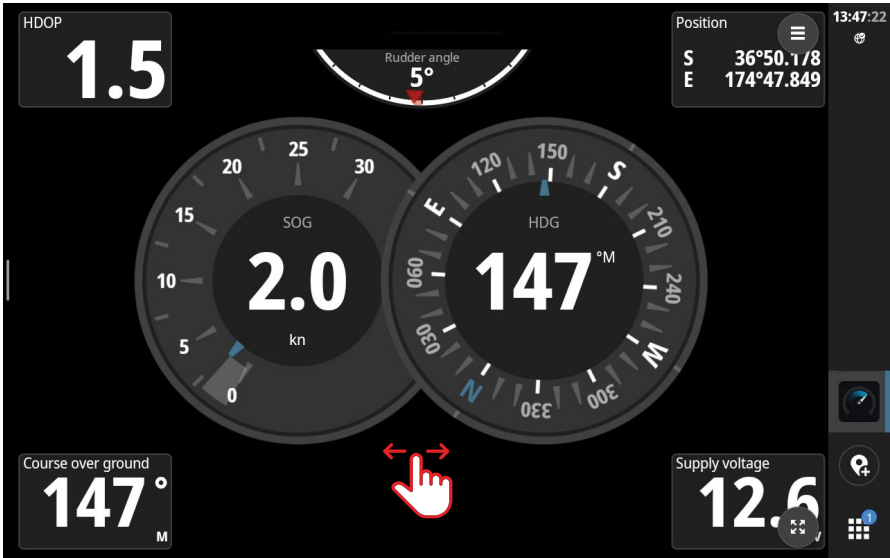


- A Menu button
- B Full screen button

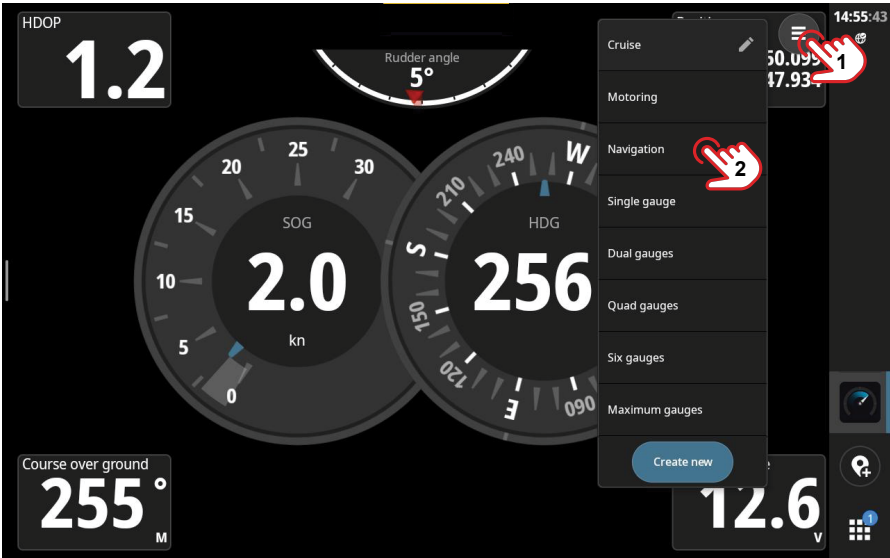
→ **Note:** The menu and full screen buttons will automatically be hidden 3 seconds after the last touch input. Just touch the screen again to see them.

DASHBOARD SELECTION

You can switch between dashboards by swiping left or right on the screen.

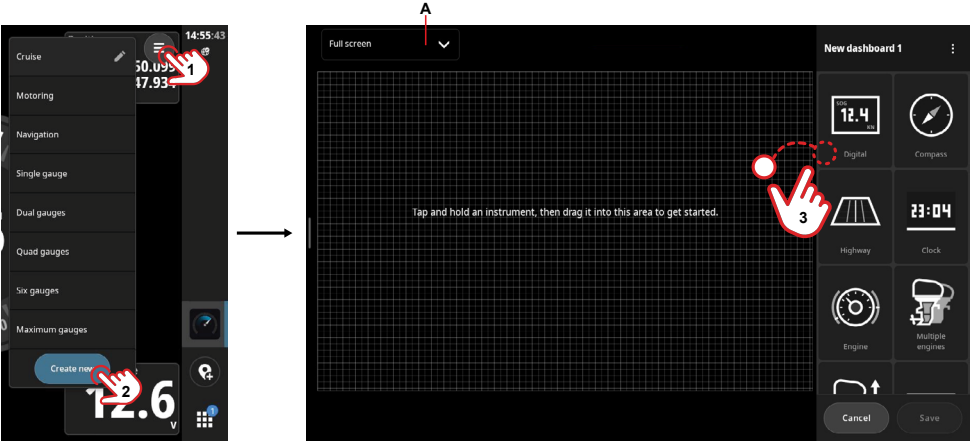


You can also directly choose a dashboard from the menu button. Select the menu button (1), then select from the available presets (2).



CREATE A NEW DASHBOARD

Select the menu button (1), select **Create new** (2), then select from preset dashboard sizes (A), the default is **Full screen**. Drag-and-drop gauges (3) where you would like to position them. You can move a gauge to a new position on the dashboard by dragging it. Select **Save** to save your dashboard.




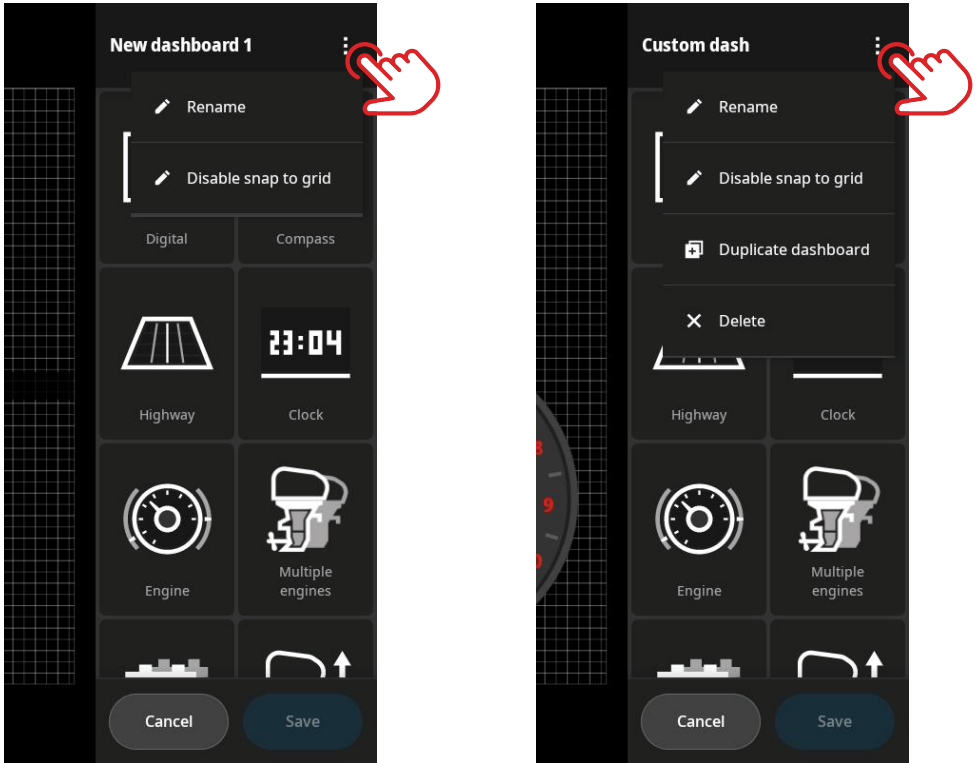
Clone a dashboard

You can clone an existing dashboard to then customize it. Select the menu button (1), select the dashboard's **More** button (2) then select **Duplicate dashboard** (3) next to the dashboard you want to clone. A copy is created, select **Save** (4) when you are done.



Custom dashboard options

When you create a new dashboard, the dashboard's **More** button  gives you access to dashboard attributes and options.

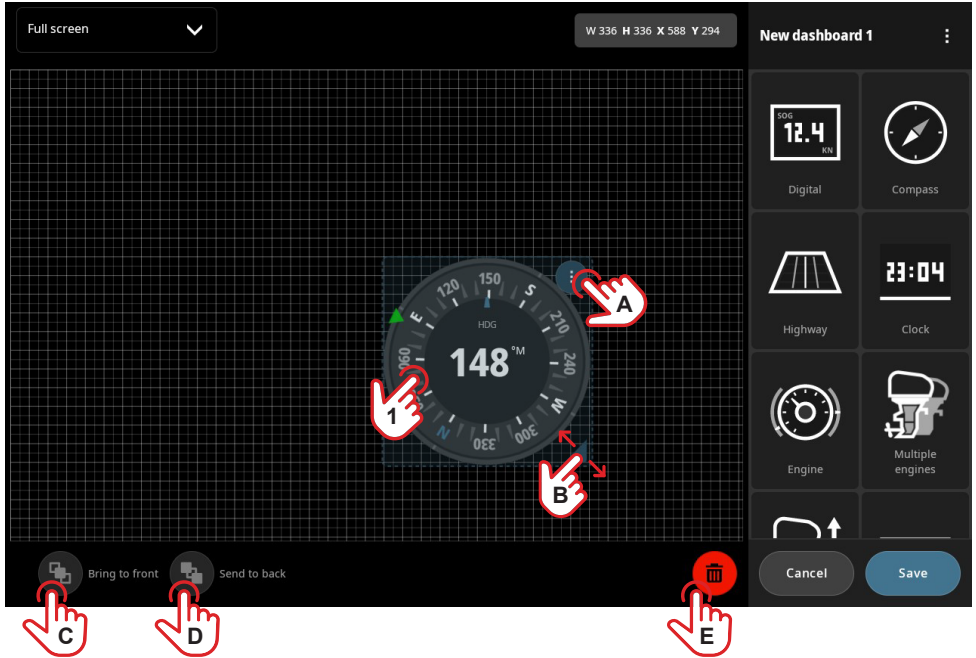


Additional options are available when you modify a custom dashboard. Here you can:

- **Rename** — use to rename the customized dashboard.
- **Disable snap to grid** — this helps you place the gauge freely anywhere on the dashboard instead of aligning to the grid.
- **Duplicate dashboard** — duplicate this dashboard.
- **Switch to dark mode** — changes the dashboard gauges to a dark color theme.
- **Delete** — use to delete this dashboard.

Gauge attributes

When you select a gauge on a dashboard, you can adjust its attributes and display options.



Select the gauge you want to make changes to (1), then use the following options to make adjustments:

- A** Gauge settings — select to view/adjust the gauge settings.
- B** Resize gauge — select and drag to resize the gauge.
- C** Bring to front — to place the selected gauge in front of other gauges.
- D** Send to back — to place the selected gauge behind other gauges.
- E** Delete button — select to delete the gauge.

Select **Save** when you're done.

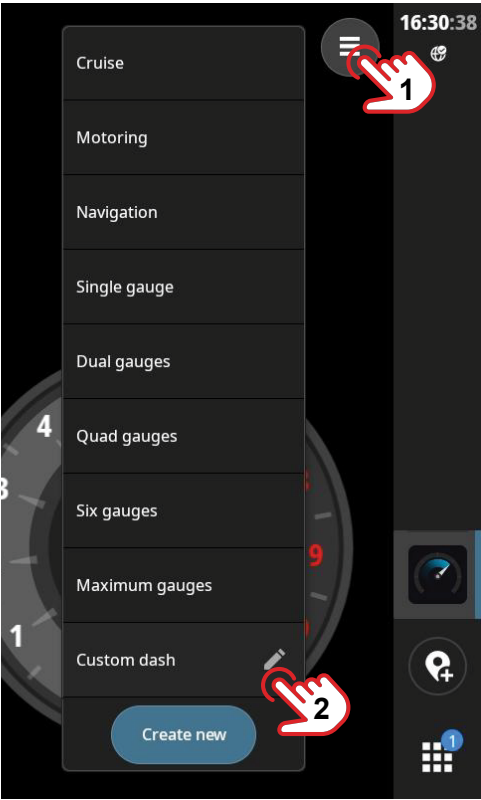
→ **Note:** The gauges displayed will depend on your display unit.

EDIT A DASHBOARD

You can edit your own dashboards and modify the gauge attributes on all dashboards, including both your own and the predefined ones.

Edit your own dashboards

Open the custom dashboard you want to edit. Select the menu button (1) and then the edit dashboard (2) button.



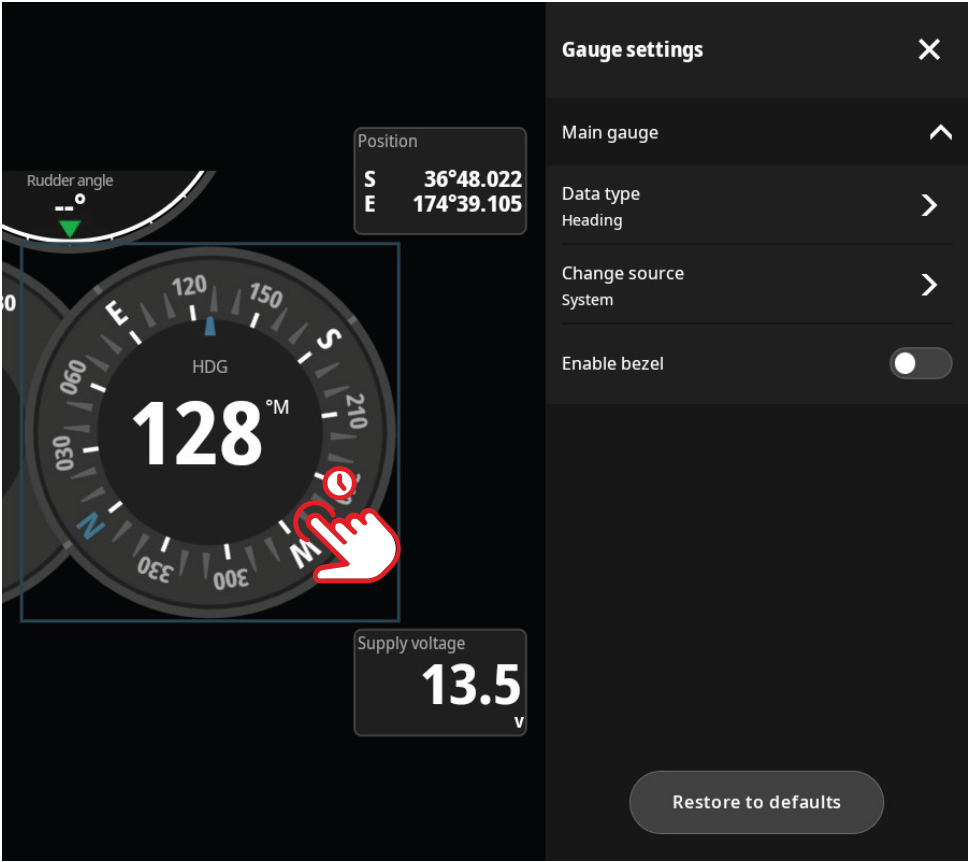
You can then make changes to the custom dashboard in the same way as creating, adding, and configuring individual gauges.

→ *Note: Predefined dashboards cannot be edited or deleted.*

GAUGE SETTINGS

On any dashboard, select and hold a gauge to open the **Gauge settings** panel. Press the **X** button when you have completed your changes.

Select **Restore to defaults** to reset the gauge to its factory default settings.

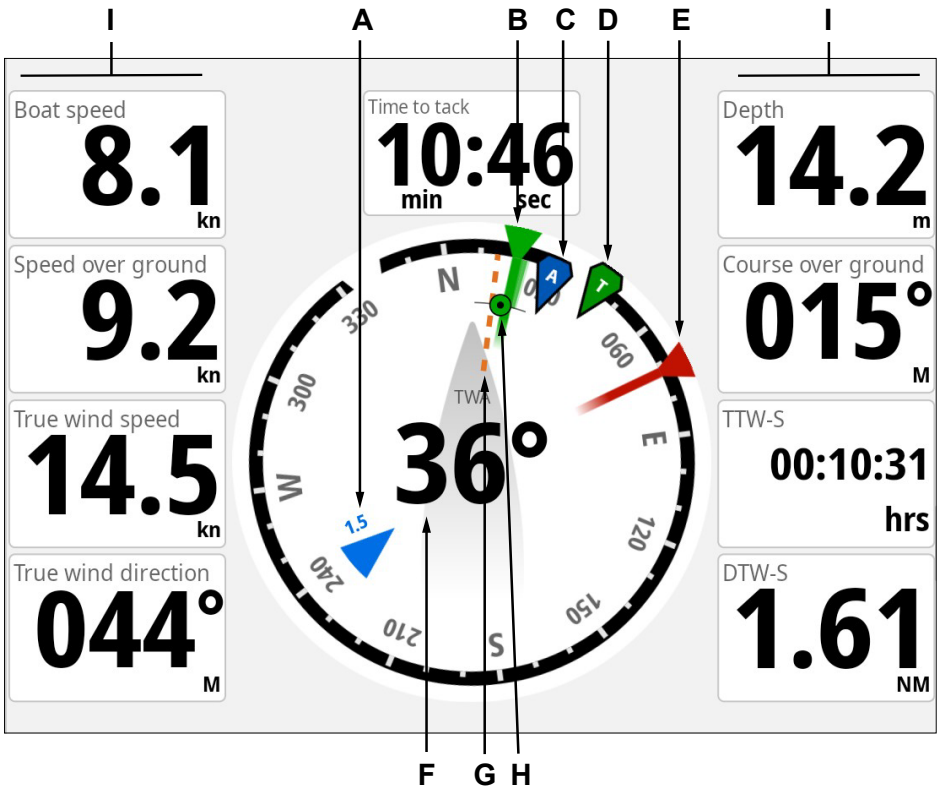


→ **Note:** Select **Restore to defaults** to reset the gauge to factory settings. This cannot be undone.

SAILSTEER

i This functionality applies to B&G devices only.

SailSteer provides a composite view of key sailing data. All data is displayed relative to the yacht's bow. Navigate to the **Instruments** app to see SailSteer data.



- A Tide rate and relative direction
 - B Starboard layline
 - C Apparent Wind Angle (AWA)
 - D True Wind Angle (TWA)
 - E Port layline
 - F True Wind Angle (TWA) — configure in gauge settings.
 - G Course over ground (COG) — represented by the orange dotted line.
 - H Bearing to current waypoint
 - I User-configurable data fields
 - **Note:** You can configure the data to present on the SailSteer gauge. Refer to **Gauge settings** in this guide for details.
- **Note:** Use the **Wind & current overlay** function in the Chart app to view true wind direction and tide data overlays on your vessel position.

Sail time calculations

The system calculates the time and distance to a waypoint, taking into consideration that the vessel is sailing on a layline course to the waypoint. Data showing time calculations will be indicated with an -S extension:


- DTW-S — Sailing Distance to Waypoint
- TTW-S — Sailing Time to Waypoint
- ETA-S — Sailing Estimated Time of Arrival

Wind and tide overlay

You can overlay the wind and tide image on the chart. Turn on the overlay feature in the chart app settings.



TIME AND WIND PLOTS

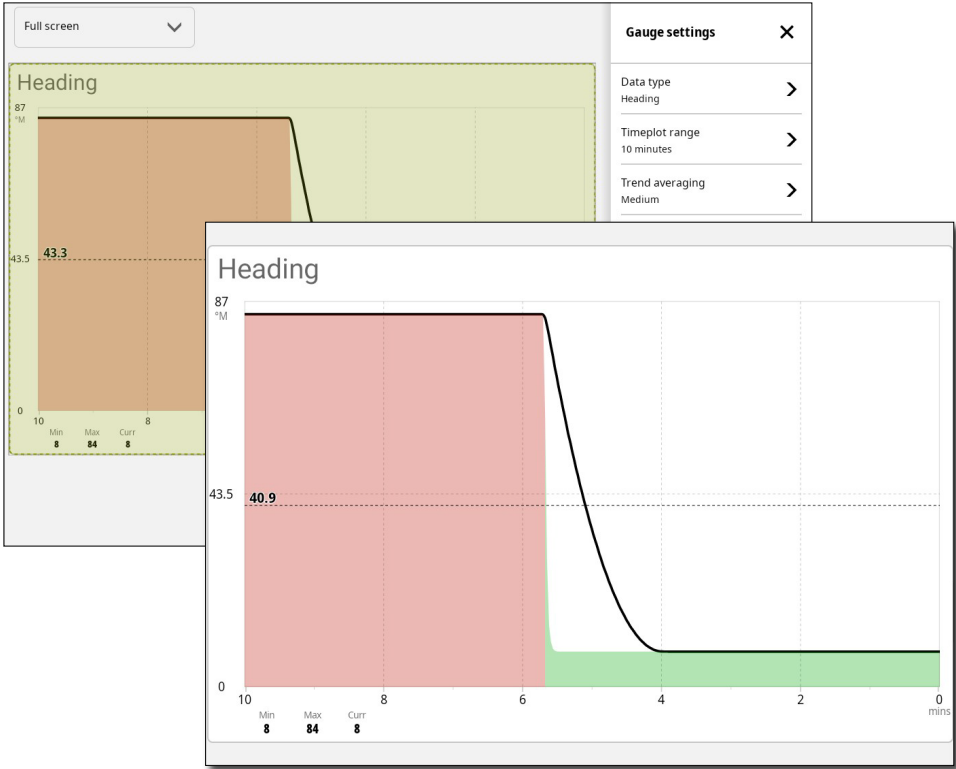
 This functionality applies to B&G devices only.

The system can present time and wind data history in different plots. The plots can be displayed in full page, or combined with other instruments in the **Instruments** app.

Time plot

A time plot can be created as a customized dashboard, follow the steps in the **Create a new dashboard** topic.

You can configure the data to present on a time plot panel, and you can define the time range for a plot.



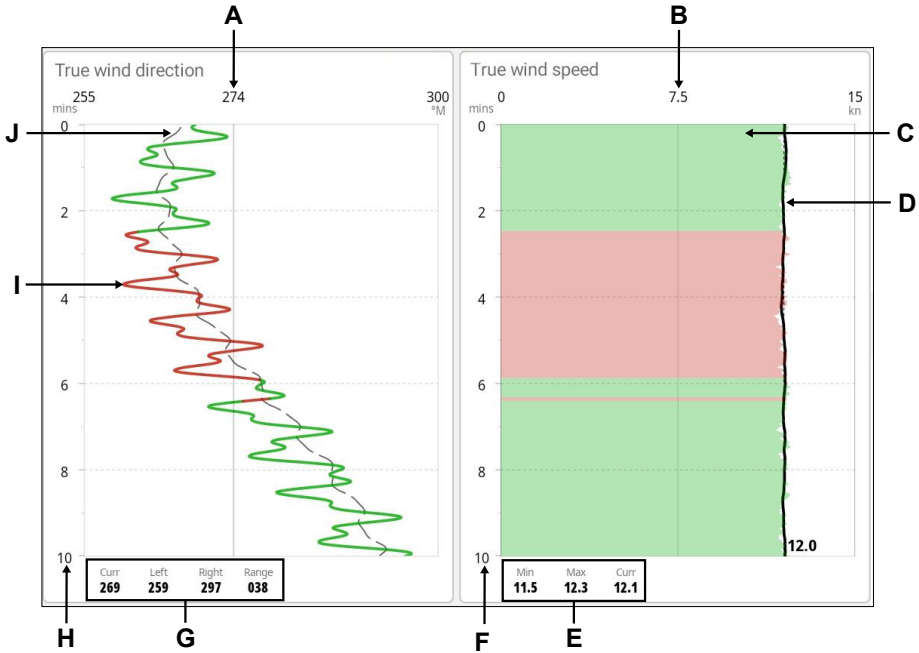
➔ **Note:** If the data is unavailable, the relevant plot turns into a dashed line and flattens out at the point the data was lost. When the data becomes available again, a dashed line joins up the two points showing an average trend line bridging the missing data.

Wind plot

A Wind plot is a special type of time plot specifically designed to communicate recent changes in wind speed and direction.

→ **Note:** A wind sensor is required for this feature to work.

The Wind plot can be displayed as a dual or combined view. On the plots, X axis = degrees or speed and Y axis = minutes.



A True Wind Direction (TWD) average

B True Wind Speed (TWS) average

C TWS plot

D TWS trend

E TWS summary bar — displays the minimum wind speed, maximum wind speed, and current wind speed.

F TWS time range

G TWD summary bar — displays the current wind direction, direction from left, direction from right, and wind range.

→ **Note:** *Left and Right here, mean how far left the TWD has been and how far right the TWD has been, i.e. the bigger the range, the more unstable the wind.*

H TWD time range

I TWD plot

J TWD trend

→ **Note:** *You can select the data to present on a time plot panel, and also define the time range for each plot. Refer to the **Modify gauge settings** topic in this guide for details.*

