

**SIMRAD®**

**B&G®**

# Instrument Bar

App Guide

English

Software version: 2.1



NSS® 4 | Zeus® SR

NSX® | Zeus® S

## Copyright

©2025 Navico Group. All Rights Reserved. Navico Group is a division of Brunswick Corporation.

## Trademarks

®Reg. U.S. Pat. & Tm. Off, and ™ common law marks. Visit [www.navico.com/intellectual-property](http://www.navico.com/intellectual-property) to review the global trademark rights and accreditations for Navico Group and other entities.

- Brunswick® is a trademark of Brunswick Corporation.
- Navico® is a trademark of Navico Group.
- B&G® is a trademark of Navico Group.
- Simrad® is a trademark of Kongsberg Maritime AS, licensed to Navico Group.
- NSS® is a trademark of Navico Group.
- NSX® is a trademark of Navico Group.
- Zeus® is a trademark of Navico Group.

## Warranty

This product's warranty is supplied as a separate document.

## Safety, disclaimer and compliance

This product's safety, disclaimer and compliance statements are supplied as a separate document.

## Internet usage

Some features in this product use an internet connection to perform data downloads and uploads. Internet usage via a connected mobile/cell phone internet connection or a pay-per-MB type internet connection may require large data usage. Your service provider may charge you based on the amount of data you transfer. If you are unsure, contact your service provider to confirm rates and restrictions.

## More information

Document version: 001

This document was prepared using software version 2.1.

Features described in this document may vary from your unit due to connected devices, settings, brand, and continuous software development.

For the latest version of this document in supported languages, and other related documentation, visit [www.simrad-yachting.com/downloads](http://www.simrad-yachting.com/downloads) or [www.bandg.com/downloads](http://www.bandg.com/downloads).

## Contact us

For product support and service information, visit [www.simrad-yachting.com/contact-us](http://www.simrad-yachting.com/contact-us) or [www.bandg.com/contact-us](http://www.bandg.com/contact-us).

# CONTENTS

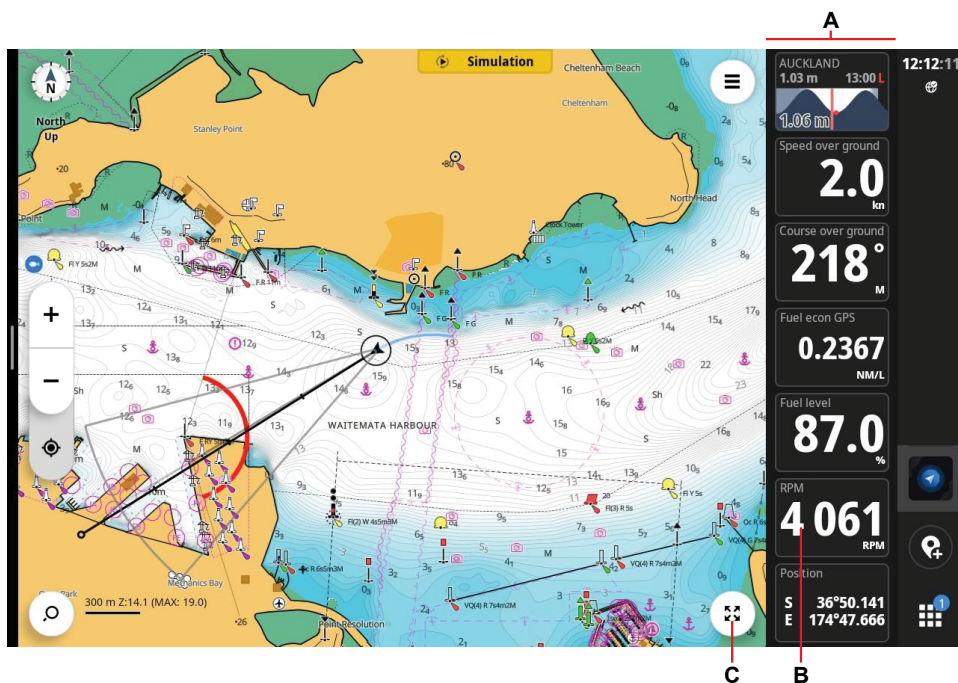
---

- 4 Overview
- 5 Switch instrument bars
- 6 Customize an instrument bar
- 7 Add instrument bar
- 8 Restore factory settings

# OVERVIEW

The instrument bar displays information from sensors connected to your vessel.

You can select from one of the preset bars to display data that relates to your current activity. As your activities change, you can quickly and easily switch instrument bars.



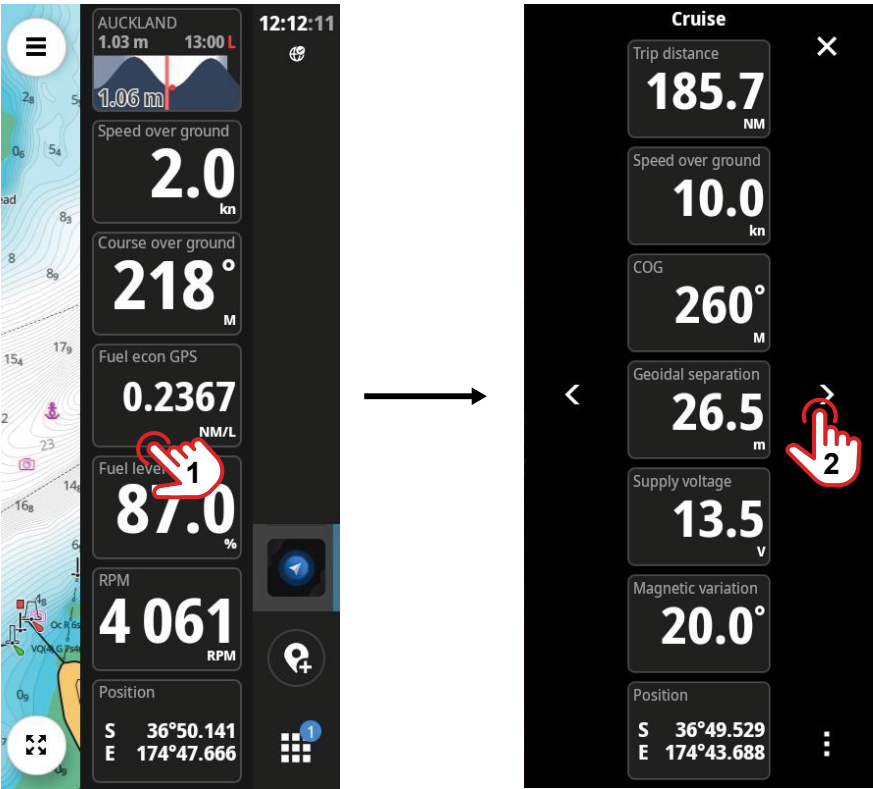
- A Instrument bar
- B Digital gauge
- C Full screen button

- **Note:** The number of gauges displayed depends on the display screen size.
- **Note:** The instrument bar is not a standalone app. It is a set of digital gauges which display alongside another app.
- **Note:** You can hide the instrument bar by selecting the full screen button (C).

# SWITCH INSTRUMENT BARS

To switch between different instrument bar presets, select anywhere on the instrument bar (1), then select the right or left arrows (2).

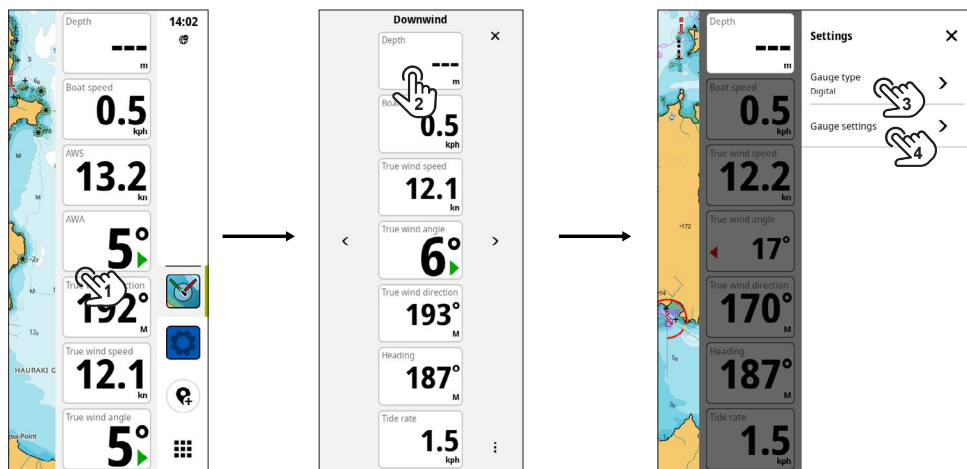
There are five instrument bar presets with gauges relevant to various activities. Gauges on all of the instrument bars can be customized as required.



➔ **Note:** When you change the instrument bar in an app, the system saves your choice. The next time you open that app, it will show the instrument bar you last selected.

# CUSTOMIZE AN INSTRUMENT BAR

To customize the information shown on an instrument bar, select anywhere on the instrument bar (1), then select a digital gauge you want to customize (2).



You can select from the following options:

- **Gauge type (3)** – select the type of gauge to display on the instrument bar.
- **Gauge settings (4)** – select to configure the selected gauge's settings:
  - **Data type** – select the data to display on the gauge.
  - **Change source** – select the source for the gauge information.
  - **Show alert** – turn on to receive alerts for this gauge.
  - **Label** – select to rename the gauge label or change the gauge label text size.
  - **Precision** – select to set how many decimal points to display on the displayed data.
  - **Restore to defaults** – select to restore the selected gauge to factory default settings.

→ **Note:** Not all gauges are available on all units.

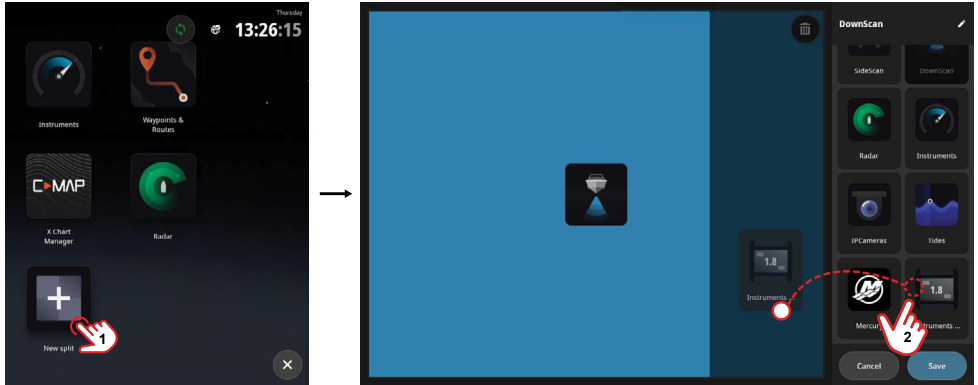
→ **Note:** The available settings vary based on the gauge selected.

→ **Note:** When you add the **Tides** gauge to the instrument bar, you can configure it to source data from a tide station closest to your current location or specify a station.

## ADD INSTRUMENT BAR

The instrument bar can be added to any custom app group you create via the **New split** button.

Select **New split**, then select and drag the app you want onto the screen. Do the same to add the instrument bar.



- **Note:** The instrument bar can only be added to the right side of the main app area for any grouped app.
- **Note:** Not all gauges are available on all units.

# RESTORE FACTORY SETTINGS

To reset the instrument bar to its factory defaults, select **Restore to defaults** (3) from the instrument bar settings (3) from the instrument bar settings.

