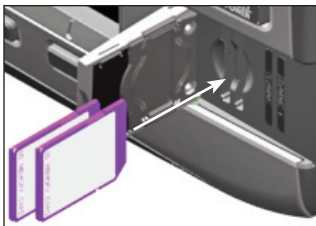


Insight USA, Nautic Insight & Lake Insight *Coastal & Inland mapping cards*

Inserting the card

Always use care when inserting SD cards. Forcing cards into the slot could cause damage.



Inserting cards into an HDS-10.

Make sure the SD card slot door is always closed to help prevent moisture from getting into the card slot compartment.

To insert the card:

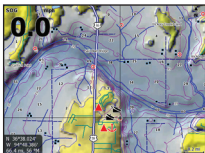
1. Gently push the card into the card slot until you feel it click into place.
2. Close the card slot door.

To remove the card:

1. Push the card until you feel it click.
2. Pull the card out of the card slot.
3. Close the card slot door.

Insight Mapping data

When the card is inserted, Insight mapping data will appear automatically. To use the unit's built-in HDS mapping data or Navionics data, you must remove the Insight mapping card from the card slot.



With Insight



Without Insight

Exporting waypoints/routes/trails

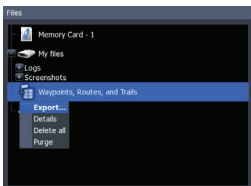
You can export a copy of your saved waypoints, routes and trails from your unit to the Insight card.

To export files:

1. Insert your Insight card into the card slot on the front of your unit.
2. Press the **PAGES** key.
3. Rotate the carousel menu until the Utilities icon is selected.
4. Select *Files* and press **ENTER**.

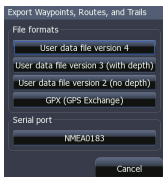


Files selected

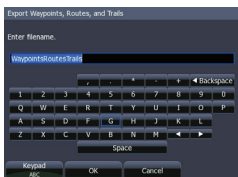


Waypoints, routes and trails selected

5. Select *waypoints, routes and trails* and press **MENU**.
6. Select *Export* and press **ENTER**.
7. A window will appear allowing you to save the files in one of four formats.



File format screen



Filename keyboard

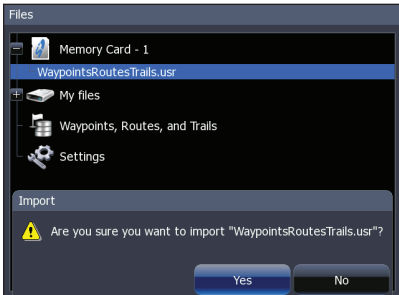
8. Press **ENTER** to use the default file format or select a desired format and press **ENTER**.
9. Make sure *Memory card* is selected and press **ENTER**.
10. A keyboard will appear, allowing you to rename the waypoint/route/trail file.
11. Input the desired name, select **OK** and press **ENTER**.

Importing waypoints/routes/trails

You can import a copy of your saved waypoints, routes and trails from your Insight card to your unit.

To import files:

1. Repeat Steps 1-4 from the previous exporting files instructions.
2. Select *Memory Card* and press **ENTER** to view the files on the card.

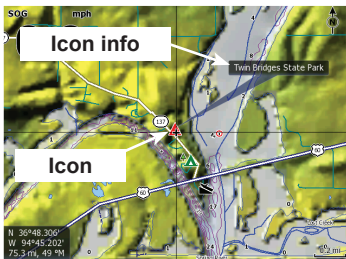


3. Highlight the waypoints, routes and trails file and press **MENU**.
4. Select *Import* and press **ENTER**. A confirmation message will appear.
5. Select *Yes* and press **ENTER**.

Using Fishing Hot Spots[®] data

When Fishing Hot Spots icons appear on the display, center the cursor on the icon and information about the icon will appear.

For more information, center the cursor on the icon and press **ENTER** (or the **INFO** soft-key) to view the icon information screen.



Information

▲ Twin Bridges State Park

Ramps: 1 lane concrete Parking: 100 spaces available Description: Restrooms, camping and fishing pier are available.

Directions:
On the north end of the lake, 6 miles east of the town of Fairland. From Fairland, go east on US Hwy 60 to the State Hwy 137 junction. Turn right into the park and follow the signs to the access area.

Amenities:
-Boat rentals
-Boat ramp
-Campground
-Picnic area
-Restrooms
-Store

Icon information screen

Fishing Tips & Techniques



When this icon is selected an information screen will appear covering topics like lures, locations, tackle hints, types of cover, presentation methods and details about the major species in this lake.

Lake Profile



The Lake Profile screen displays an overview of the lake itself, including information on size, depth, shoreline, bottom composition, water source, water quality and fish cover.

Fishery (Lakes)

Marked Fishing Area (Coast)



When selected on a lake, the icon will display the Fishery screen with information about the number/size of major species, management practices, forage species and special regulations. When the icon is selected in a coastal region, the Marked Fishing Area information screen will appear with specific fishing tips for that area.

Marked Fishing Area (Lake)

General Info (Coast)



When this symbol is selected on a lake, the Marked Fishing Area Information screen will appear with specific fishing tips for that area of the lake. When the symbol is selected in coastal areas, a general information screen will appear with mariner's notices and other navigation information.

Marine service icons

Provides information about onshore services and facilities like boat ramps, Gas Docks, marinas and campgrounds.



Marina



**Boat
ramp**



**Camp-
ground**



Facilities



**Gas
dock**

Chart categories

You can control what data categories are shown on the map by turning on/off categories from the Chart Categories screen.

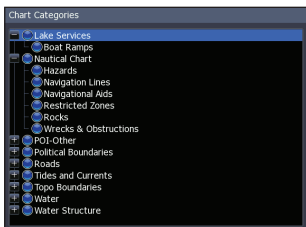


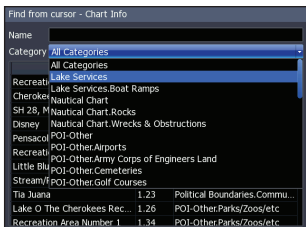
Chart Categories screen

To turn on/off categories:

1. Press **MENU**, select *Chart Options* and press **ENTER**.
2. Select *Categories* and press **ENTER**.
3. Highlight the desired category and press **ENTER** to turn it on/off.

Searching for categories

You can search for chart categories by proximity or by category type using the Find feature on the Chart menu.



Searching for category type.

To search for a category:

1. Press **MENU**, Select *Find* and press **ENTER**.
2. Select *Chart Items* and press **ENTER**. The Chart info screen will appear with a list of chart categories starting with the one nearest to your location.
3. Highlight *All Categories* and press **ENTER** to search for a desired category type.

End User License Agreement

IMPORTANT - DO NOT LOAD THE ENCLOSED PRODUCT(S) UNTIL YOU HAVE READ AND AGREE TO THIS LICENSE AGREEMENT.

BY LOADING THE PRODUCT(S) YOU ARE AGREEING

TO BE BOUND BY ALL THE TERMS AND CONDITIONS OF THE Navico* ("LICENSOR") SOFTWARE LICENSE AGREEMENT ("AGREEMENT") WHICH IS PROVIDED WITH THIS DIGITAL MAPPING PRODUCT ("LICENSED PRODUCT(S)") INCLUDING, WITHOUT LIMITATION, THE USE RESTRICTIONS, WARRANTY DISCLAIMER AND LIMITATIONS OF LIABILITY SET FORTH THEREIN.

IF YOU DO NOT AGREE to be bound by all of the terms and conditions of the Agreement, you should immediately STOP INSTALLATION or use of the Licensed Product(s) and refer any questions in writing to Navico.

Under the Agreement, you have a limited, non-exclusive, personal license to (i) use the data contained on the media in this package, on a single computer or GPS mapping device for supplemental navigation reference purposes and (ii) make one archival copy of the Licensed Product(s) for use with the same computer or GPS mapping device. Licensor and its third-party suppliers retain all rights to the Licensed Product(s) not expressly granted by the Agreement. You are responsible for using official government charts and prudent navigation for safe travel.

The Licensed Product(s) and the accompanying documentation are copyrighted works of authorship and contain valuable secret and confidential information proprietary to Licensor and its third-party suppliers who retain the ownership of the information and all copyrights and other proprietary rights therein. You agree to exercise reasonable efforts to protect their proprietary interests.

You may NOT modify, adapt, translate, reverse engineer, decompile, disassemble sublicense, rent, lease or sell any portion of the Data. You may NOT create derivative works based upon the Data. You may NOT place the Data onto a server so that it is accessible via a public network such as the Internet.

The software license is effective until terminated. The license will terminate without any notice from the Licensor if you fail to comply with any provisions of the Agreement. Upon termination, you must cease all use of the Licensed Product(s) and documentation and return them to Licensor. The Agreement is governed by and construed in accordance with the laws of the State of Oklahoma. If any part of this

Agreement is found void and unenforceable, it will not affect the validity of the remainder of the Agreement.

DISCLAIMER OF WARRANTIES AND LIMITATION OF LIABILITY

LICENSOR* AND ITS THIRD-PARTY SUPPLIERS MAKE NO WARRANTIES OR REPRESENTATIONS, EXPRESS OR IMPLIED, REGARDING THE PROGRAM, MEDIA, DOCUMENTATION, RESULTS OR ACCURACY OF DATA AND HEREBY EXPRESSLY DISCLAIM ANY WARRANTIES OF MERCHANTABILITY AND FITNESS FOR A PARTICULAR PURPOSE AND NONINFRINGEMENT. LICENSOR AND ITS THIRD-PARTY SUPPLIERS DO NOT WARRANT THE LICENSED PRODUCT(S) WILL MEET YOUR REQUIREMENTS OR THAT ITS OPERATION WILL BE UNINTERRUPTED OR ERROR-FREE. IN NO EVENT WILL LEI OR ITS SUP-PLIERS BE LIABLE TO YOU FOR ANY CONSEQUENTIAL OR INCIDENTAL DAMAGES. Some states or jurisdictions do not allow the exclusion or limitation of consequential or incidental damages, so the above limitations may not apply to you.

The liability of Licensor and its third-party suppliers for damages shall not exceed the actual amount paid for the software license.

*Navico, Inc.

Lowrance® and Navico® are registered trademarks of Navico.

Fishing Hot Spots® is a registered trademark of Fishing Hot Spots Inc.

Additional mapping data: Copyright© 2009 Fishing Hot Spots Inc.; Copyright© 2009 Maptech Inc.; Copyright© 2009 Waypoint Technologies, Inc.



* 9 8 8 - 0 1 7 1 - 4 5 A *