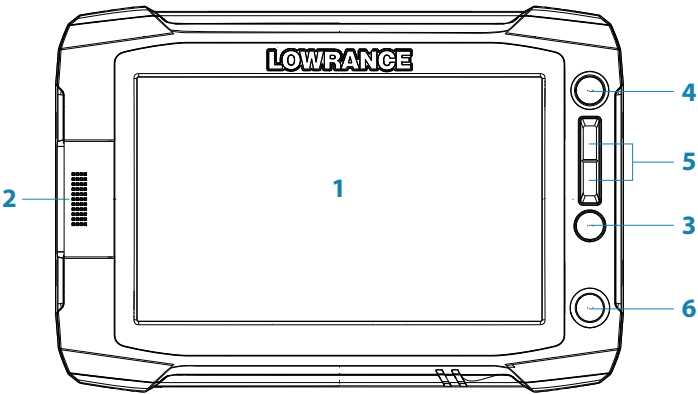


LOWRANCE

HDS Gen2 Touch Chartplotter



Quick Start Guide

Overview



No.	Description
1	Touch screen
2	SD Card reader
3	Waypoint key. A short press opens the waypoint menu; long press opens Find menu.
4	Pages key. A short press displays the home screen. Repeated short presses cycles through favorite pages.
5	IN / OUT/MOB key. Zoom key for chart, radar and sonar pages. A simultaneous press on both keys will position a Man Overboard waypoint at the vessel's position
6	Power key. A short press opens the backlight/power dialog. Repeated short presses toggles through brightness levels.

The power button

	• Press and hold:	Turn unit on/off	
	• Single press:	Display dialog for light adjustment and standby mode	
	• Repeated presses:	Toggle preset brightness levels	

The homescreen



➔ **Note:** video is only available on HDS Gen2 Touch 9” and 12” units.

No.	Description
1	Utilities panel. Tap an icon to access utility data.
2	Favorites panel. You can display Favorite pages, save new Favorites or clear previously configured pages. Repeatedly tapping the Pages key will cycle through favorite pages.
3	Main icons. Tap an icon to view a page fullscreen. Press and hold an icon to view quick split combo page options.
4	More. Tap to see the full menu.
5	Back. Tap to exit the homescreen and return to previous active page
6	Local time.
7	Speed.

Device configuration

The device configuration dialog appears when you start up the unit for the first time. It will reappear at the next restart if you select **Maybe later**. Tap **Close** to manually configure settings.



Selecting main pages



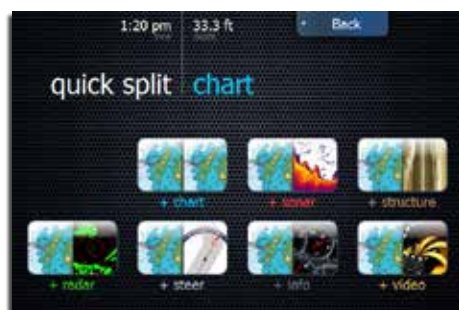
Tap the page icon



Accessing quick splitscreen displays (quick splits)



Press and hold the page icon



Customizing favorite pages



Several panel configurations are available:

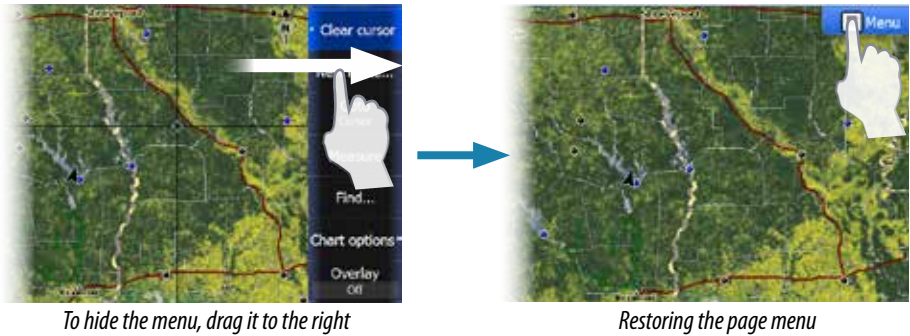


Menus

Page menu



Hiding the page menu

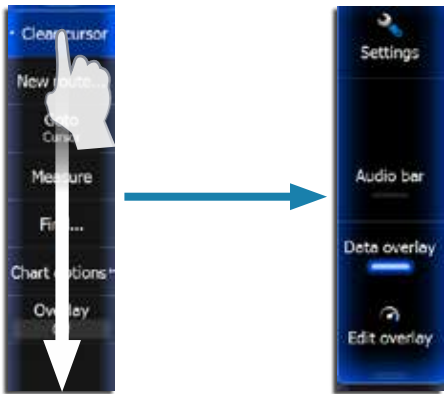


To hide the menu, drag it to the right

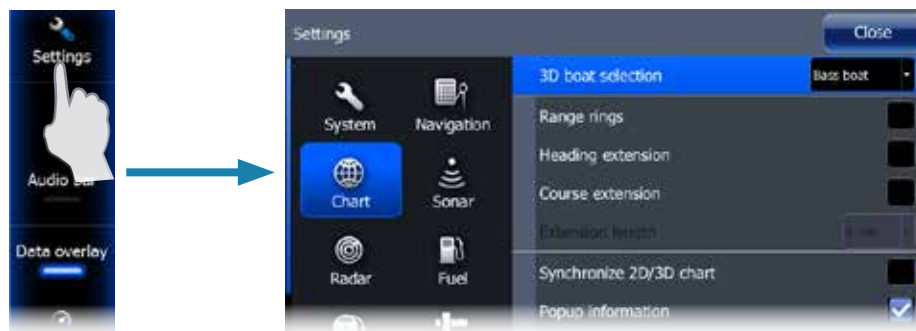
Restoring the page menu

Hidden system menu

The page menu for each operation mode has a hidden system menu. To access the hidden system menu, place your finger on the top menu item and drag down.



Operation mode settings menu

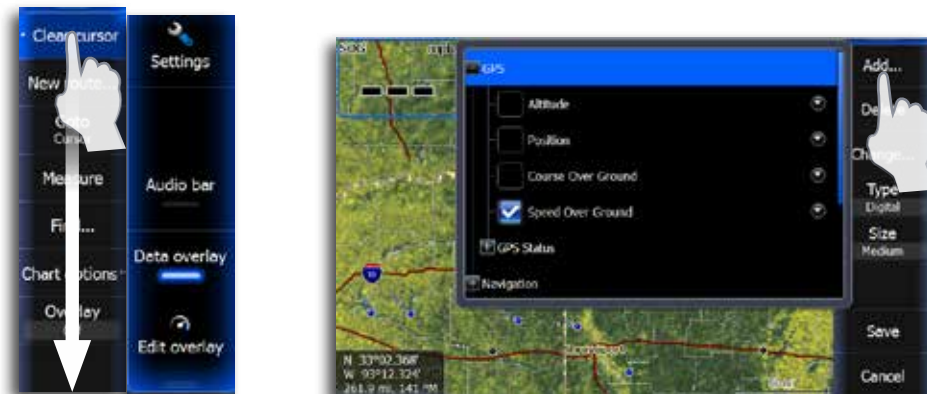


System settings

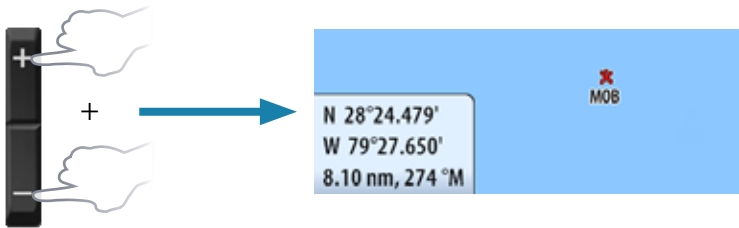


Data Overlay

You can turn on/off viewing of overlay data and edit overlay data from the hidden system menu on any page.



Saving a Man Overboard waypoint



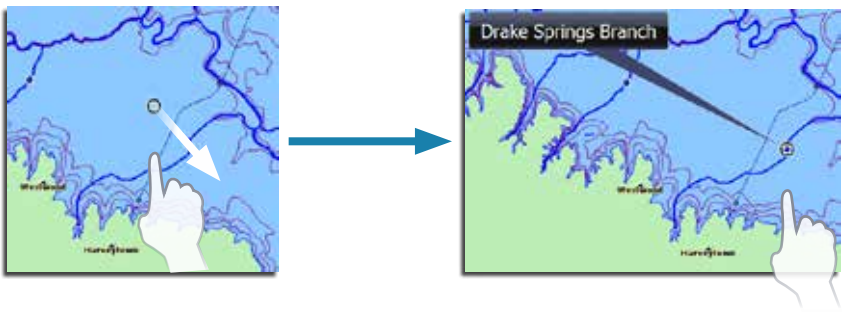
Using the cursor

Tap the screen to activate the cursor. Drag your finger in any direction to pan the screen. Tap **Clear Cursor** to remove the cursor from the page.



Cursor assist mode

Press and hold your finger on the screen to switch the cursor to cursor assist mode. The selection tool will appear above your finger. Drag the selection tool over the desired item.



Creating a waypoint

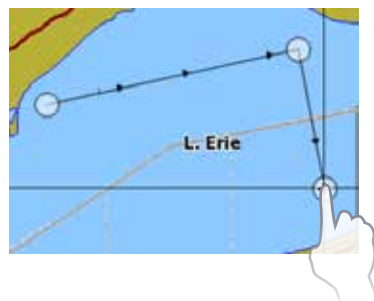
The waypoint will be positioned at the cursor when the cursor is active. When the cursor is not active, the waypoint will be positioned at your current location.

→ **Note:** Press the dedicated waypoint key twice to quickly save a waypoint.



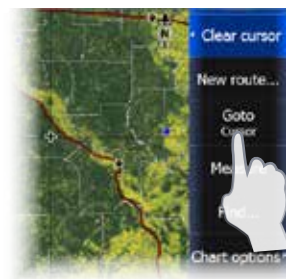
Creating a route

Tap the screen to activate the cursor. Tap **New** on the menu and select **New route**. Tap the screen to place routepoints. Tap **Save** when all routepoints have been placed.



Navigation

Goto cursor



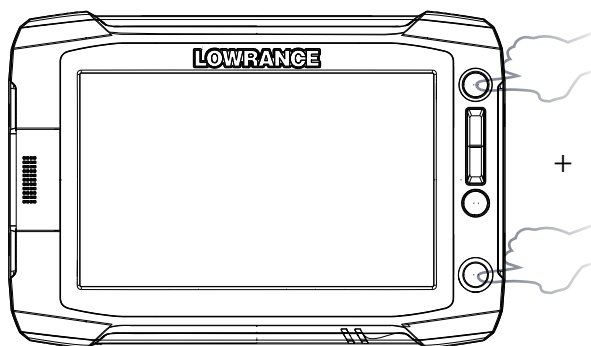
Cancel navigation



Screen captures

Taking screen captures

Simultaneously press and hold the **PAGES** and **POWER** keys to take a screenshot.



Touchscreen calibration

If your screen is unresponsive to the touch, or the onscreen response does not align with your touch, you need to calibrate the touchscreen.

1. Turn the unit off
2. Press and hold the **WAYPOINT** key, then turn the unit on
3. Hold the **WAYPOINT** key during power on, until the calibration utility screen comes up
4. Touch crosshair shown on screen to perform nine points calibration
5. After successful calibration the unit will return to normal application screen

