

ADDENDUM HDS Gen3

- **sw release 3.0 and 3.5**

This addendum documents new features that are included in HDS Gen3 software release 3.0 and 3.5 that are not described in the HDS Gen3 Operator manual or other documentation.

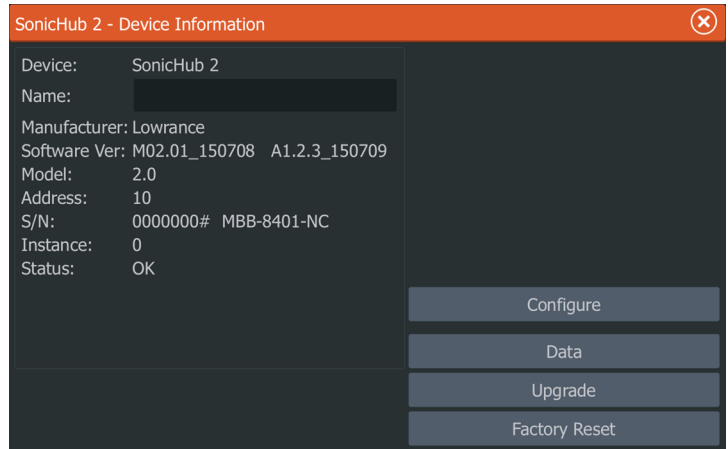
Feature	sw 3.0	sw 3.5	Page
SonicHub 2 support	✓		3
New SiriusXM Weather features	✓		5
System and network devices analyzer	✓		6
StructureScan® 3D support	✓		7
Precision-9 compass support		✓	7
TotalScan transducer support		✓	8
SiriusXM weather information and alerts added		✓	9
Network analyzer and service assistant improvements		✓	9

SonicHub 2 supported

A SonicHub 2 connected to the NMEA 2000 network is supported.

SonicHub 2 Device Information

Open the Network Settings dialog and select the SonicHub 2 device in the Device list. This opens the SonicHub 2 Device Information dialog.



Configure

Select to configure the device.

Upgrade

Updates the device software.

→ **Note:** A USB memory stick with the software upgrade must be plugged into the device. Periodic software updates may be available from the product website. Detailed instructions for how to install the software are included with the upgrade files.

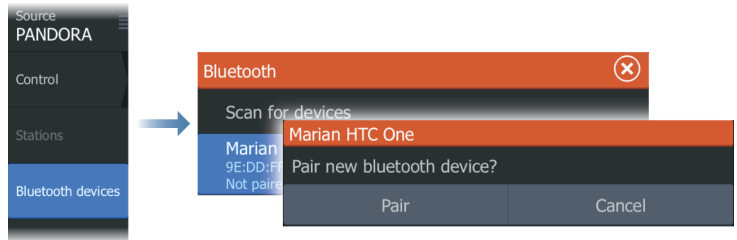
Factory Reset

Resets the device to factory defaults.

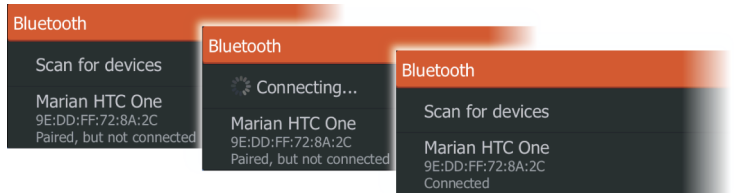
SonicHub 2 is Bluetooth enabled

The SonicHub 2 is a Bluetooth enabled device. You can use the SonicHub 2's built-in Bluetooth wireless to connect it to Bluetooth enabled audio devices.

To pair the SonicHub 2 to a Bluetooth enabled device select the Bluetooth devices option. Choose the Bluetooth device you want to pair to from the list of available devices and then select Pair.



The SonicHub 2 connects to the paired device.

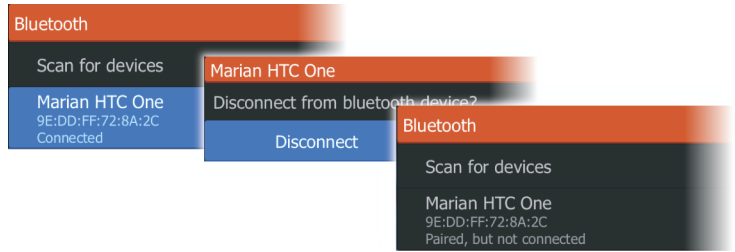


Connecting and disconnecting paired devices

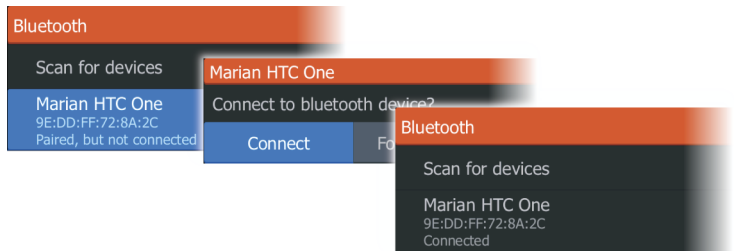
The SonicHub 2 automatically connects to a device when you pair them. You can pair it to several devices but only one device can be connected at a time.

You can manually disconnect and connect the SonicHub 2 to paired devices.

To disconnect a paired device, select the paired device in the device list and then select **Disconnect**.



To connect to a paired device, select the paired device in the device list and then select **Connect**.

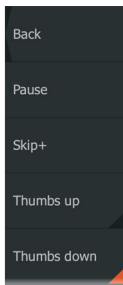


Pandora

The SonicHub 2 supports streaming music from Pandora from an Android device (over Bluetooth) or IOS device (over USB and Bluetooth).

→ **Note:** You must be in a valid location to use Pandora. Refer to the Pandora website for more information.

Use menu controls to run Pandora on the smart device.



New SiriusXM weather features

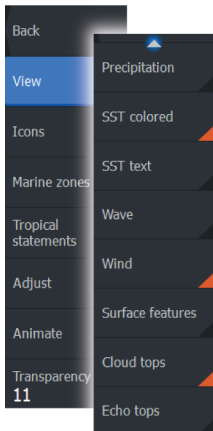
SiriusXM data sources have been integrated to provide improved accuracy and detail. Improvements include sea-surface temperature (coastal and the Great Lakes), nearshore wave height, and inland wind speed and direction. Support for new SiriusXM Canadian marine zone text is added and the Marine zone feature is changed. In addition, there are 3 new View menu options.

Marine zones

Depending on your selected subscription, SiriusXM services includes access to weather reports for U.S. and Canadian Marine Zones, with the exception of the high seas zones.

You can select a marine zone on a chart and view its forecast. You can also select a marine zone as your current zone of interest and you will be notified of any weather warnings in that zone.

New View menu options



Surface features

Turns surface features on/off. Surface features include fronts, isobars, and pressure points. Surface features cannot be shown at the same time as Wind.

Cloud tops

Turn Cloud tops on/off. Cloud tops indicate the height of the top of the clouds. The color palette used is grey with darker greys indicating lower clouds. Cloud tops cannot be shown at the same time as Precipitation or Echo Tops.

→ **Note:** This feature is only available for certain SiriusXM subscriptions.

Echo tops

Turns Echo tops on/off. Echo tops indicate the tops of storms. The color palette used is the same as for Precipitation. Echo tops cannot be shown at the same time as Precipitation or Cloud Tops.

→ **Note:** This feature is only available for certain SiriusXM subscriptions.

System and network devices analyzer

The system has a built-in network analyzer that creates a report of the devices installed on the NMEA 2000 and Ethernet network. It can also create a service report about your system and network devices such as the software versions, serial numbers, and information from the settings file.

To use the analyzer, open the About page of the System settings dialog and select Support. Two options are displayed:

Create report

Prompts you for information for support and creates the report with information automatically gathered from the network. You can add screenshots and log files to the report. The maximum report size is 20 MBs. You can save the report to a memory card and email it to support.

Check system for updates

Checks if updates are available for compatible devices on your network.

→ **Note:** To ensure the internal list of software versions is up to date, your system must be connected to the internet.

StructureScan® 3D support

StructureScan 3D is supported. StructureScan 3D is a multi-beam sonar technology that allows anglers to see underwater structure and bottom contours in customizable, three-dimensional views.

For more information, refer to the separate StructureScan 3D documentation.

Precision-9 compass support

The Precision-9 compass is supported. It connects to the NMEA 2000 network. The Precision-9 compass outputs magnetic heading data suitable for autopilot steering, and also rate of turn, pitch, and roll.

Separate documentation is provided with the Precision-9 compass.

Precision-9 configuration

Heading, Roll and Pitch offset

Used for compensating the mechanical offsets resulting from the selected location and orientation of the compass.

Instance

The device instance is determined by the configuration process. It should only be required to change this if identical devices on the network are not automatically given unique instance numbers.

Precision-9 - Device configuration

Configuration

Device

Precision-9

Compass offset (°)

-089

Local Field (%) 63

Field Angle (°) 142.7

Roll offset (°)

+000

Pitch offset (°)

+000

Advanced Options

Instance

000

TotalScan™ transducer support

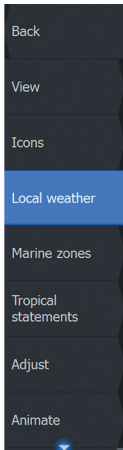
The TotalScan transducer is supported. The TotalScan transducer is an all-in-one transducer combining CHIRP sonar capabilities with exclusive high-resolution StructureScan® HD and DownScan Imaging™ technology. Separate documentation is provided with the TotalScan transducer.

SiriusXM weather information and alerts added

SiriusXM local weather information for major cities can be displayed. The information includes weather forecasts and alerts.

Local weather

Select the Local weather menu option to display the Local weather dialog. This dialog shows weather forecast and alerts for the area. Select a time-slot tab to see the forecast for it.



Network analyzer and service assistant improvements

This feature name is changed to Network analyzer and service assistant, it was previously referred to as the System and network devices analyzer.

When an internet connection is made:

- and Check system for updates is selected, the Network analyzer and service assistant will inform you if a sw update is available for download
- service reports can be uploaded to support directly from the system

→ **Note:** Remove any mapping cards from your unit and install a memory card with sufficient storage before downloading software updates or creating and saving reports to the memory card.

LOWRANCE®

lowrance.com

