

**ADDENDUM**

**• HDS Gen3 sw release 1.5**

---

This addendum covers changes to HDS Gen3 included in software upgrade version 1.5.

Feature	Refer page
Wireless connections	2
<ul style="list-style-type: none"><li>• Connect and disconnect from a wireless hotspot</li></ul>	2
<ul style="list-style-type: none"><li>• GoFree Shop</li></ul>	3
<ul style="list-style-type: none"><li>• GoFree Controller &amp; Viewer</li></ul>	3
<ul style="list-style-type: none"><li>• Uploading log files to Insight Genesis</li></ul>	3
<ul style="list-style-type: none"><li>• Wireless settings</li></ul>	4
Recording log data	5
Stop recording log data	6

## Wireless connection

GoFree wireless connectivity gives you the ability to:

- Use a wireless device to remotely view (smartphone and tablet) and control the system (tablet only).
- Access the GoFree Shop.
- Upload your Sonar logs to create custom maps at Insight Genesis.
- Download software updates
- Connect to third party applications



The HDS Gen3 includes built-in wireless functionality.

Configuration and setup of the built-in wireless functionality is described in the HDS Gen3 Installation manual.

### Connect and disconnect from a wireless hotspot

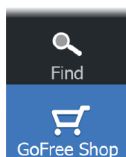


To connect to a wireless hotspot, select the Connect Wireless option in the System Controls dialog. This opens the Wireless Devices dialog. Use this dialog to select the desired hotspot, and enter the login information. Connecting to a wireless hotspot changes the wireless mode to **Client mode**. In this mode you can access the GoFree Shop.



To disconnect from a wireless hotspot, select the disconnect wireless option in the System Controls dialog. This changes the wireless mode to **Access point mode**. In this mode you can connect a wireless device so that Apps such as GoFree Controller & Viewer can access the vessel's navigation information.

## GoFree Shop



The built-in wireless functionality must be connected to an external wireless hotspot in order to access the GoFree Shop.

At the GoFree Shop you can browse, purchase and download compatible content for your system including navigation charts and Insight Genesis Maps. When you log on, the system automatically gives you a notification if a new software version is available for your system. If an update is available, you can download it to a card slot or defer the download until later. If you defer the download until later, the notification is available in the About dialog accessible from the System Settings.

## GoFree Controller & Viewer



The wireless functionality lets you use a wireless device to remotely view (smartphone and tablet) and control the system (tablet only). The system is viewed and controlled from the wireless device by the GoFree Controller & Viewer Apps downloaded from their relevant Application store. When remote control is accepted, the active page is mirrored to the wireless device.

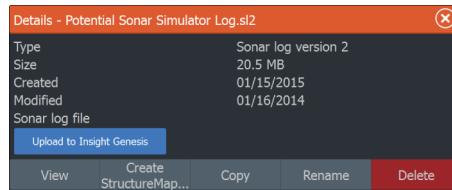
- **Note:** To use smartphones and tablets to view and control the system, wireless functionality must be disconnected from the wireless hotspot (in **Access point mode**).
- **Note:** For safety reasons, Autopilot and CZone functions cannot be controlled from a wireless device.

## Uploading log files to Insight Genesis

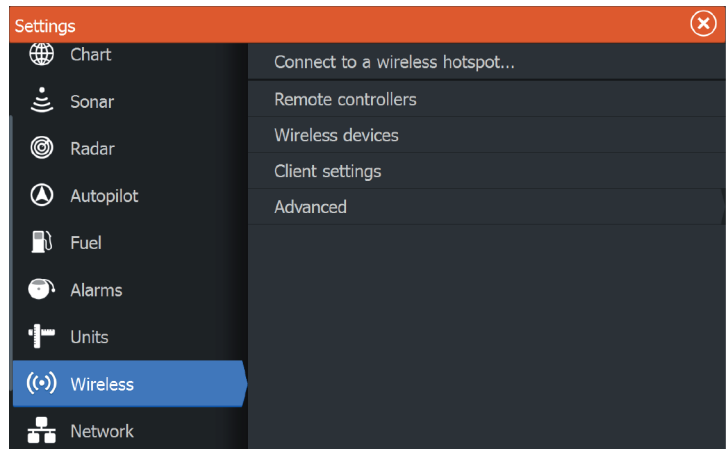
To upload a recorded Sonar log file to Insight Genesis, select the file you want to upload from the Files panel and select the upload to Insight Genesis option.

- **Note:** You must be connected to a wireless hotspot to upload recorded log files to Insight Genesis.
- **Note:** Recorded log files can also be uploaded to Insight Genesis if you have specified **Upload to Insight Genesis**

in the Log Sonar dialog. For more information, refer to *"Recording log data"* on page 5.



## Wireless settings



Provides configuration and setup options for the wireless functionality. Setup for the Wireless settings dialog is described in the Installation Manual with the exception of the following new options:

### Connect to a wireless hotspot

Displays the Wireless device dialog that you can use to connect the wireless functionality to a wireless hotspot.

### Client settings

Displays information about the wireless hotspot your unit is connected to or the last one your unit was connected to. You can

select the hotspot in the dialog to set it as a hotspot you want to always connect to when in range or you can select to delete it.

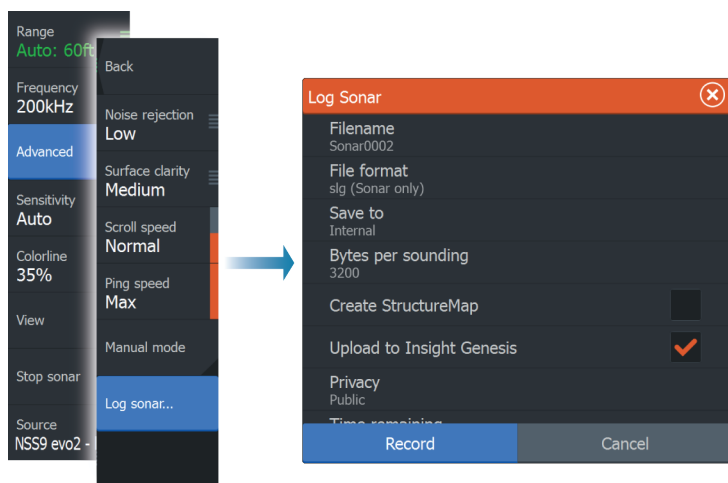
## Changes to existing manual sections

### Recording log data

You can record of Sonar and StructureScan log data and save the file internally in the HDS Gen3 unit, or save it onto a card inserted into the unit's card reader.

The **Log sonar** dialog is activated from the **Advanced** menu option, or the from the **Sonar Settings** dialog.

When the Sonar image is being recorded, there is a flashing red symbol in the top left corner and a message appears periodically at the bottom of the screen.



The following new options are available in the **Log Sonar** dialog:

### Upload to Insight Genesis

Files are transmitted to Insight Genesis when recording completes, if you are connected to a wireless hotspot. For information about wireless hotspots, refer to *"Wireless connection"* on page 2.

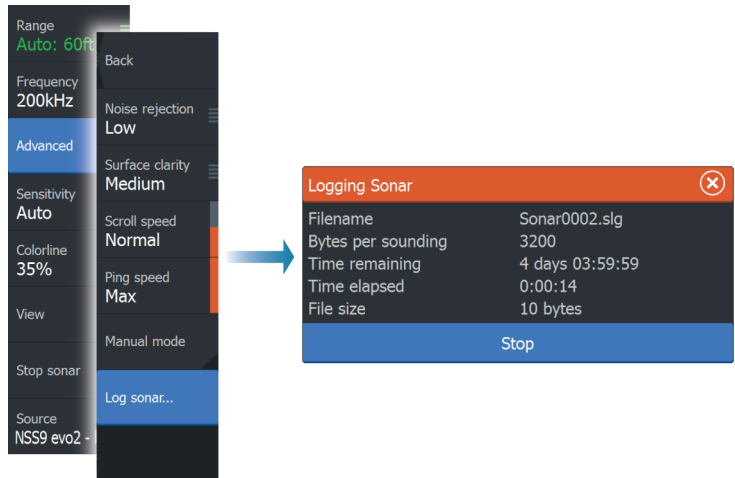
## Privacy

If you have a Premium Insight Genesis account, you can set the recorded log files as **Private** at Insight Genesis. Otherwise, all log files uploaded are **Public**.

## Stop recording log data

Select **Stop** in the Logging Sonar dialog to fully stop the recording of all sonar log data.

→ **Note:** If you have selected the **Upload to Insight Genesis option** option and are connected to a wireless hotspot, your recorded files are transmitted to Insight Genesis when you select **Stop**.





# LOWRANCE®

[lowrance.com](http://lowrance.com)

