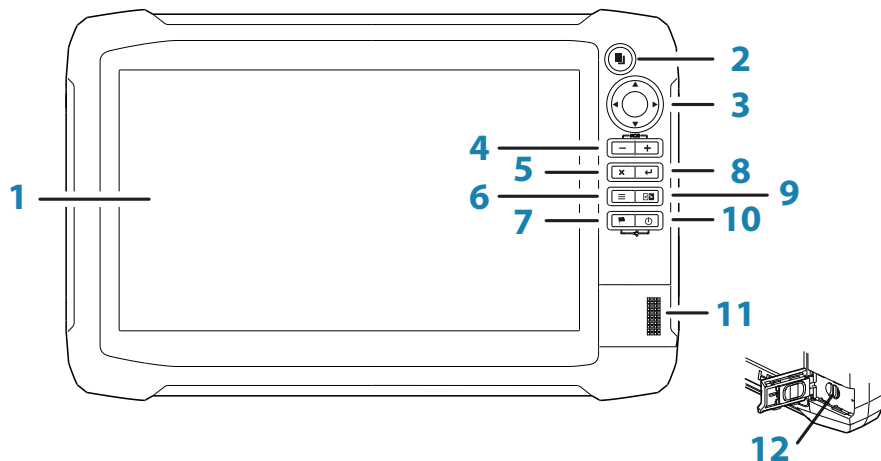


HDS Gen3 Polaris


Quick Start Guide

Overview

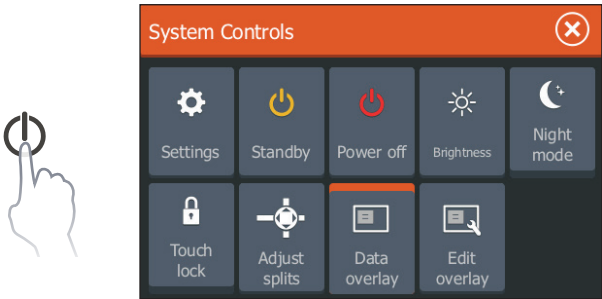


No.	Key	Function
1	Touchscreen	
2	Pages key	Activates the home page
3	Cursor keys	Pans the cursor, moves through menu items and adjusts values
4	Zoom out/ Zoom in keys	Zooms the screen; press keys simultaneously to save a Man Overboard (MOB) waypoint
5	Exit (X) key	Exits dialogs, returns user to the previous menu level and removes the cursor from the screen
6	Menu key	Activates the panel menu; press twice to access the Settings menu; press and hold to hide the panel menu
7	Waypoint key	Opens the new waypoint dialog; press twice to save a waypoint; press and hold to access the Find menu
8	Enter key	Confirms selections and saves settings
9	Panel key	Switches the active panel on a multiple-panel display; press and hold to expand the active panel to a full-page panel
10	Power key	Opens the System Controls dialog, adjusts the backlight level and powers the unit on/off
11	Card reader door	
12	microSD card readers	

The power key

	• Press and hold:	Powers the unit on/off
	• Single press:	Opens the System Controls dialog
	• Repeated presses:	Changes brightness level

System controls dialog



Function	Description
Settings	Opens the settings menu
Standby	Turns off the screen and switches unit into a low-power mode
Power off	Turns off unit
Brightness	Opens backlight adjustment slider
Night mode	Dims the backlight and displays a palette designed for low-light conditions
Touch lock	Disables the touchscreen
Adjust splits	Allows user to adjust panel size when multiple panels are displayed
Data overlay	Turns on/off data overlay display
Edit overlay	Allows editing of the size, position and content of overlay data

The home page

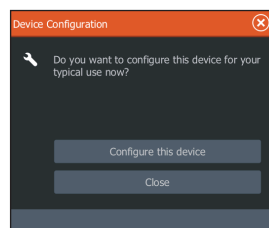


No.	Description
1	Tools panel. Select an icon to access menu options.
2	Favorites panel. You can display, create, edit and delete Favorite pages. Repeatedly tapping the Pages key will cycle through saved favorite pages.
3	Applications. Select an icon to view a page full screen. Press and hold an icon to view quick split page options.
4	Scroll up/down to view all menu items.
5	Select Exit to return to the previous active page.
6	Local time.
7	Speed.

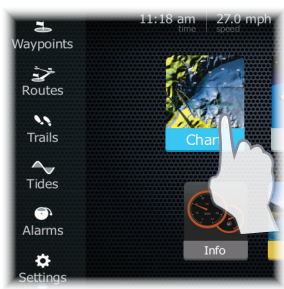
Device configuration

When you start up the unit for the first time, or after restoring defaults, the configuration dialog appears.

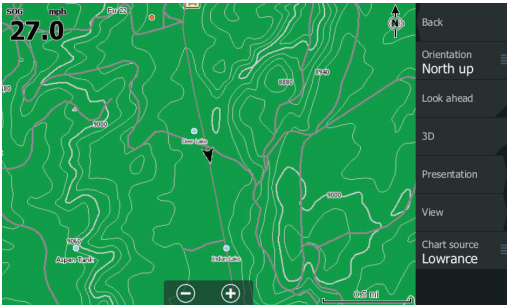
Select **Configure this device** to use the configuration wizard to configure the unit and other networked devices. Select **Close** to manually configure settings.



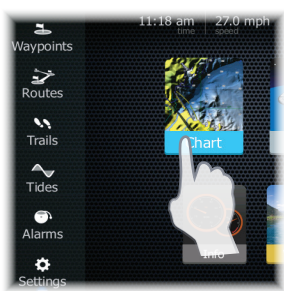
Selecting pages



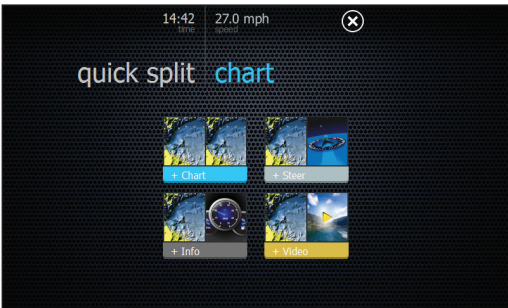
Press the page icon



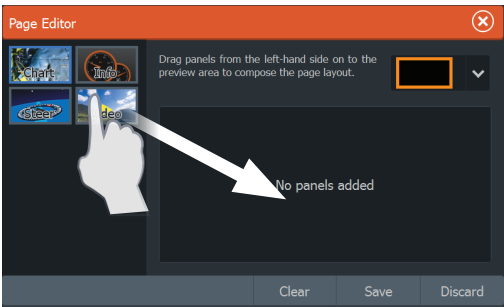
Accessing quick splitscreen pages (quick splits)



Press and hold the page icon



Customizing favorite pages

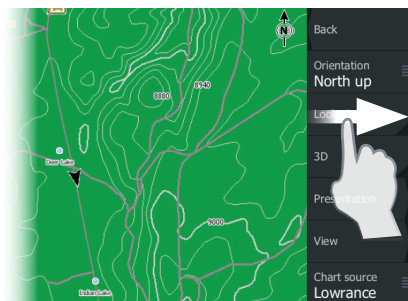


Several panel configurations are available:

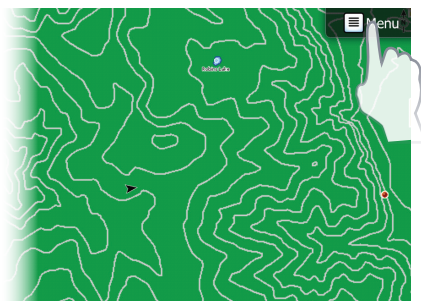


Menus

Hiding the page menu



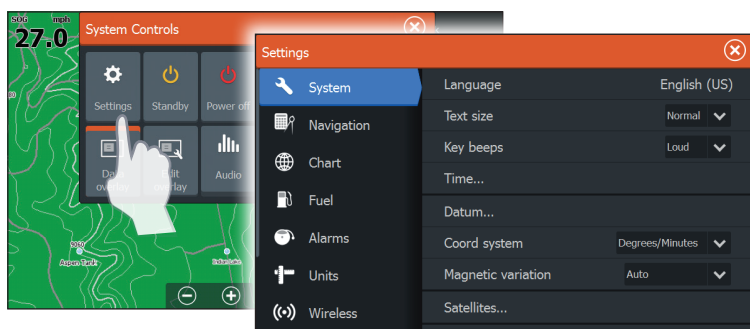
Drag the page menu to the right to hide it



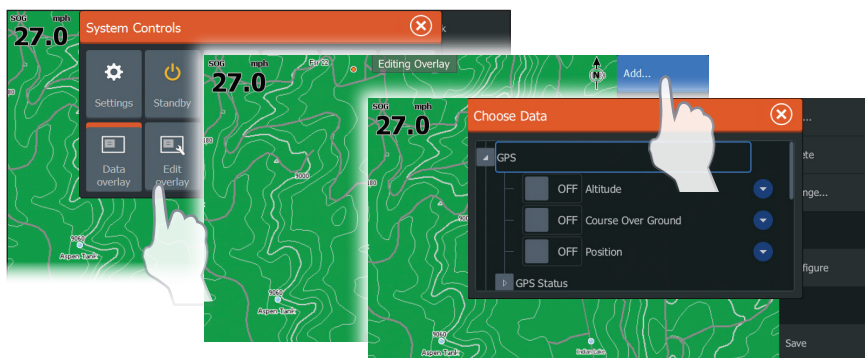
Press the Menu key to restore the page menu

→ **Note:** You can also press and hold the **Menu** key for three seconds to hide a page menu. The menu is restored by pressing the **Menu** key.

Settings menu

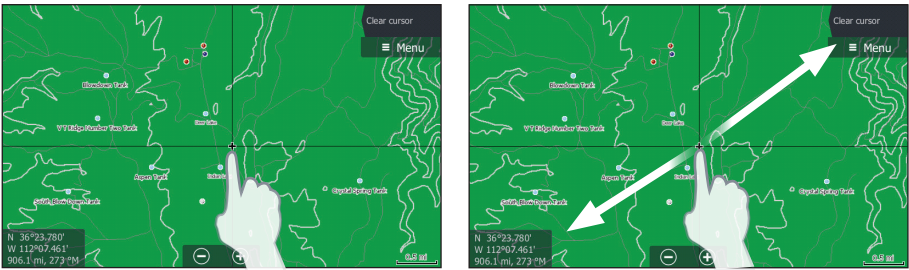


Data overlay

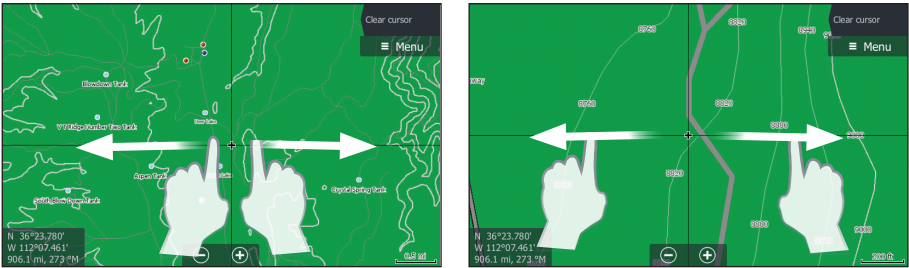


Using the cursor

Tap the screen or press the Cursor keys to activate the cursor. Drag your finger in any direction to pan the screen. Select **Clear Cursor** or press the **Exit** key to remove the cursor from the page.



Multi-touch zooming



Creating a waypoint

The waypoint will be positioned at the cursor when the cursor is active. When the cursor is not active, the waypoint will be positioned at your current location.



➔ **Note:** Press the dedicated waypoint key twice to quickly save a waypoint.

