

HDS-5 & HDS-7

Quick Start Guide



Function keys

Arrow Keypad

Activates cursor on Chart page. Press up, down, left or right to move the cursor.



ZOUT Zooms out the Radar, Sonar and Chart pages.

ZIN Zooms in the Radar, Sonar and Chart pages.

EXIT Press to return to a previous screen, clear data and close menus. Pressing **Exit** on the Chart page will quickly switch between displaying the boat symbol and the last cursor position.

ENTER Press to save data, change values and accept menu commands; also acts as a short cut key for important functions such as saving a waypoint at the cursor position on the Chart page.

MENU Accesses the features available on each page.

PAGES Press to select the page (screen) to display or to access utilities such as the waypoints list and files. Press and hold to switch control between the panels on combo (split screen) pages.

**WPT
FIND** Press to save a waypoint at your current GPS position. Press and hold to search for waypoints and other points of interest (POI's) or quickly access waypoints, routes and trails.

**LIGHT
POWER** Press to turn the unit on, adjust the backlight or place the unit in low power (standby) mode. Press and hold to turn the unit off.

Creating a Man Overboard (MOB) position:

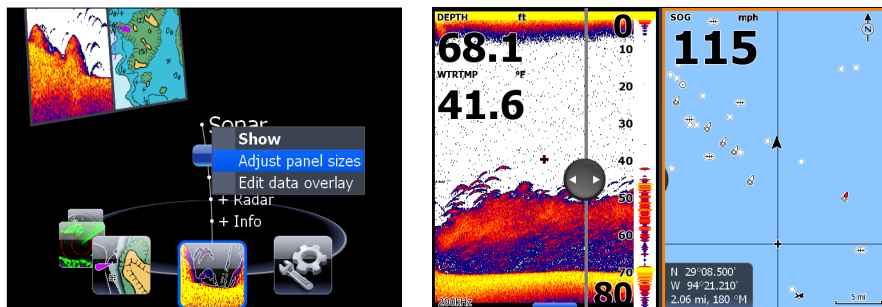
Press the **ZOUT** and **ZIN** keys at the same time to create a MOB waypoint with a line to your boat position.



Pages screen

To view a page:

1. From any screen press **PAGES** to access the Pages screen.
2. Select the desired page display.



To adjust Panel sizes on a Combo page:

1. From the Pages screen, select the desired Combo page and press the **MENU** key. Selecting Sonar + Chart will display a Sonar-Chart combo page.
2. Select *Adjust panel sizes*. Use the on-screen button to adjust the panel size.



NOTE: Hold down the **PAGES** key to switch active panels when viewing a combo page.

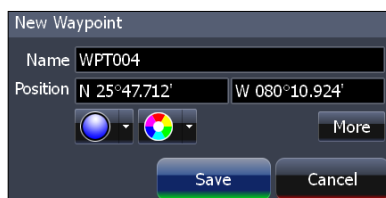
Waypoints

To Create Waypoint at current position:

1. Press the **WPT/Find** key to create a waypoint at the your current position.

To Create Waypoint at the cursor position on Chart or Sonar page:

1. Place the cursor on the Chart page where you want to set the waypoint and press the **ENTER**.
2. Select *Save* from the New Waypoint menu and press **ENTER**.



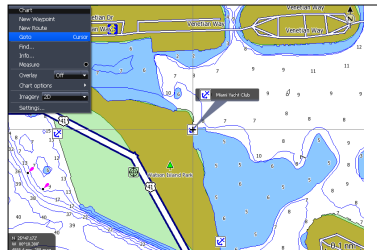
Go To Cursor / Cancel Navigation

To Navigate to the cursor:

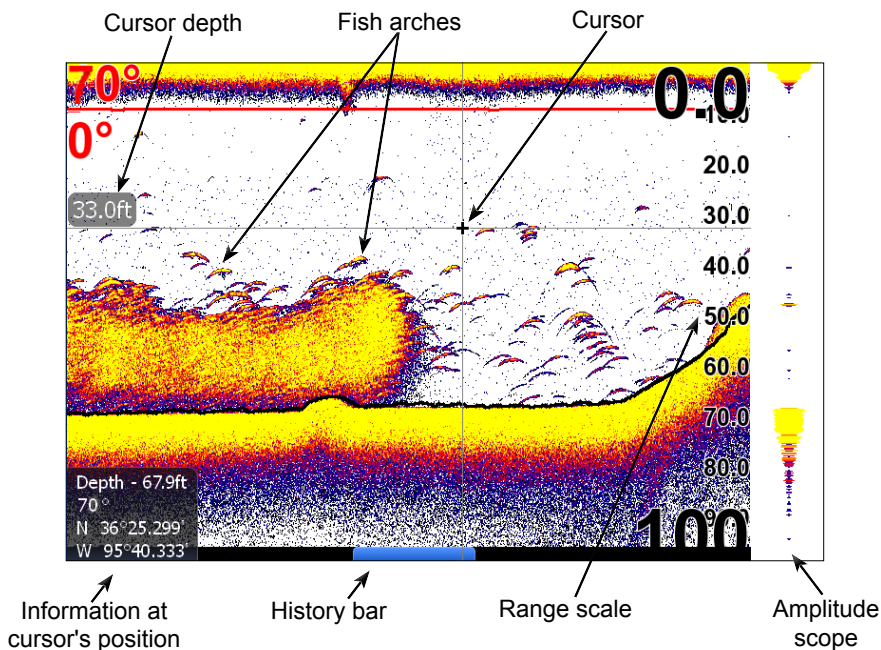
1. From the Chart page, center the cursor over a point of interest and press **MENU**.
2. Select *Go to Cursor* and press **ENTER**.

To cancel navigation:

1. From the Chart menu select *Navigation* and press **ENTER**.
2. Select *Cancel* and press **ENTER**.



Sonar (Sonar units only)



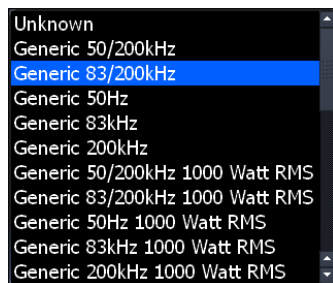
Press the keypad to the left to scroll the Sonar page back to view previous sonar returns. When the cursor is onscreen the sonar does not show real time sonar returns. Press EXIT to return to normal operation.

Transducer Type

Selecting the proper transducer type from the sonar installation menu helps optimize HDS performance by enabling settings (temperature and frequency) and menu options specific to your transducer.

To select a Transducer Type:

1. Press **MENU** twice.
2. Select *Sonar* and press **ENTER**.
3. Select *Installation* and press **ENTER**.
4. Select the desired transducer type and press **ENTER**.
5. Highlight *Save* and press **ENTER**.



Transducer type menu

Fishing Modes

Enhances the performance of your unit by providing preset packages of sonar settings geared to specific fishing conditions.

Sonar display settings/options

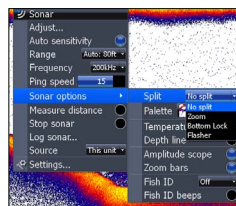
To adjust Sensitivity and Colorline:

1. From the Sonar page press the **MENU** key.
2. Select *Adjust* and press **ENTER**.
3. Press the keypad up/down to select Sensitivity or Colorline. Press the keypad left/right arrows to make adjustments.

Sonar page Split screen options

To select a Split screen display:

1. From the Sonar page press **MENU**.
2. Select *Sonar options* and press **ENTER**.
3. Select *Split* to open the Split menu.
4. Select the desired split screen and press **ENTER**.



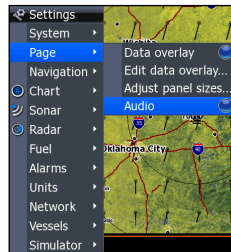
SonicHub

When the HDS is connected to a SonicHub server you can use your HDS unit to control audio playback from iPod, iPhone, USB mass storage device (mp3) and AM/FM radio.

Enabling audio

You must enable Audio on your display unit's settings menu to control audio playback with your unit.

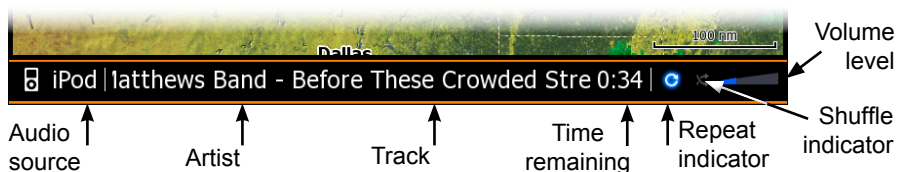
The media bar panel will not be visible until audio has been enabled.



NOTE: Hold down the **PAGES** key (2 seconds) to switch between active panel and SonicHub operation.

SonicHub media bar panels

The media bar panel varies from one audio source to another, see examples below:





Operating SonicHub audio

When the media bar is the active panel, press the **MENU** key to access the SonicHub menu. Adjustments to SonicHub audio playback settings can be made from the SonicHub menu, function keys and the keypad.

Volume control, song and station selection, favorites and audio source can be adjusted/accessed using your units function keys and keypad. Shuffle and Repeat features (iPod, iPhone and USB Mass Storage) must be turned on/off on the SonicHub menu.

Function key controls

- **ZOOM IN** — Increase Volume
- **ZOOM OUT** — Decrease Volume
- **ENTER** — Mute

Keypad Controls	
iPod, iPhone, USB Mass Storage	AM/FM radio
<div>Audio Source</div> <div>Previous track</div> <div>Next track</div> <div>Play/Pause</div> 	<div>Scroll forward through favorites</div> <div>Previous station: (AM/FM — Tune backward)</div> <div>Next station (AM/FM — tune forward)</div> <div>Scroll backward through favorites</div> 



NOTE: When listening to AM/FM radio, press and hold the keypad left or right to switch from tune mode to seek mode.



NOTE: When playing audio from an iPod or USB storage device, press and hold the keypad left or right to rewind or fast forward through a track.