

Technical specifications

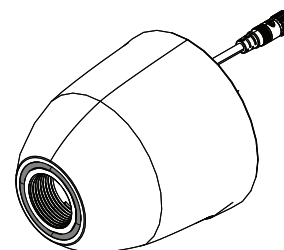
Environmental	
Operating temperature	-15°C to +55° C (+5°F to +131°F)
Storage temperature	-30°C to +70°C (-22°F to +158°F)
Sonar	
Output	Traditional DownScan imaging Temperature
Frequency	
Traditional	200 kHz High Chirp 83 kHz Medium Chirp
DownScan	455 kHz 800 kHz
Maximum depth*	
Traditional	305 m (1000 ft) at 200 kHz / High Chirp
DownScan	91 m (300 ft) at 455 kHz

* The maximum depth can vary depending on the output power of the equipment the transducer is connected to.

LOWRANCE®

HDI NOSE CONE TRANSDUCER

INSTALLATION GUIDE



For product manuals, technical specifications, certificates and declarations refer to the product website:

www.lowrance.com



Compliance

The product complies with:

- CE under EMC Directive 2014/30/EU.
- Level 2 devices of the Radiocommunications (Electromagnetic Compatibility) standard 2017.

The relevant Declaration of conformity is available in the product's section at the following website:

- www.lowrance.com

! Warning: The user is cautioned that any changes or modifications not expressly approved by the party responsible for compliance could void the user's authority to operate the equipment.

Mounting

Parts included

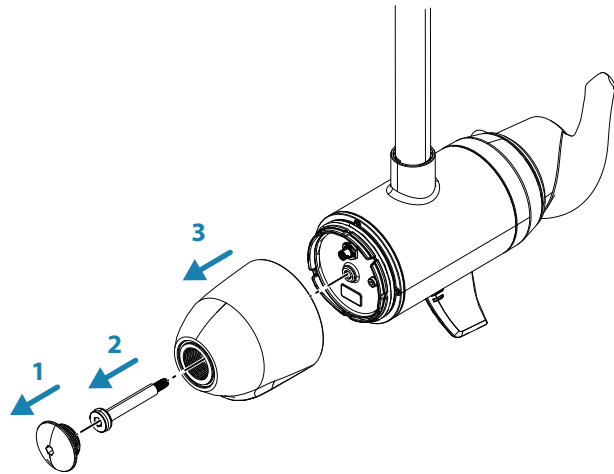
- 1x HDI nose cone transducer
- 4x Orings (1x Oring (A), 2x Oring (B), 1x Oring (C))

Tools required

- 8 mm hex key

Remove the already installed nose cone

In the example below, an empty nose cone is illustrated. The same principles apply for nose cones with a built in transducer.



Install the HDI nose cone transducer

Before installing the transducer nose cone, check that the O-rings (1x A, 2x B and 1x C) are properly installed.

Nosecone bolt (D) torque: 7.5 Nm (5.5 ft-lbf)

Nosecone cap (E) torque: 3.5 Nm (2.5 ft-lbf)

