

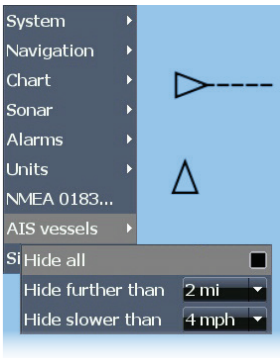
## Elite-5/5M and Elite-7/7M RTM 3.0 Addendum

This addendum documents new AIS features included in the Elite-5 and Elite-7 RTM 3.0 software upgrade. These features are not described in the Elite-5 or Elite-7 Operation manuals or other documentation.

### AIS

The marine Automatic Identification System (AIS) is a location and vessel information reporting system that aids in collision avoidance. It allows vessels equipped with AIS to automatically receive position, speed, course and vessel identity information from other AIS-equipped vessels.

If an AIS device is connected, all targets detected by the device can be displayed.



### AIS Setup

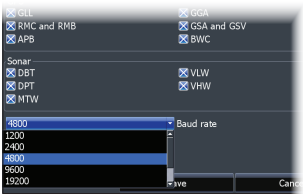
AIS is configured using your unit's NMEA 0183 functionality. Before using AIS, the Baud rate on your unit must be set to the same Baud rate as your AIS device.



**NOTE:** *Your unit must be set to Advanced mode to access NMEA 0183 settings.*

**To select a Baud rate:**

- 1. Access the settings menu.
- 2. Select *NMEA 0183*.
- 3. Access the Baud rate dropdown menu on the NMEA 0183 settings dialog.
- 4. Select the same Baud rate used by your AIS device.
- 5. Select *Save*.



**Target symbols**

The unit uses the AIS target symbols shown below:

Symbol	Description	
	Stationary AIS target	
	Moving AIS target with (COG) course extension line The extension line always represents the target's course over ground and is set to 10 minutes by default.	
	Lost AIS target	When no signals have been received within a time limit a target will be defined as lost. The target symbol represents the last valid position of the target before the reception of data was lost.

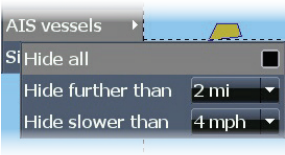


**NOTE:** *If you receive heading data from an AIS vessel, the orientation of the vessel icon represents its heading. If heading data is not received, the orientation of the vessel icon represents its course over ground (COG).*

## Filtering the targets

All targets, by default, are shown on the display if an AIS device is connected to your unit.

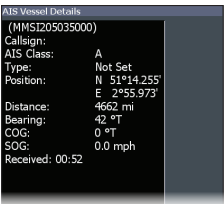
You can hide all targets, or filter the target icons based on distance and vessel speed.



## Viewing AIS target information

When you place the cursor on an AIS icon the MMSI number or vessel name (if available) will be displayed.

You can view detailed information about a target by selecting the target and pressing **ENTER**. The AIS Vessel detail dialog will appear.



**AIS Vessel detail  
dialog**

# LOWRANCE®

[www.lowrance.com](http://www.lowrance.com)



\* 9 8 8 - 1 0 6 4 2 - 0 0 1 \*