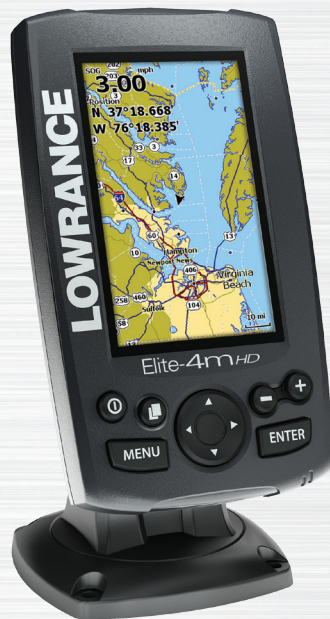


LOWRANCE®



Elite-4m HD

Operation manual

Copyright © 2014 Navico

All rights reserved.

Lowrance® and Navico® are registered trademarks of Navico.

Fishing Hot Spots® is a registered trademark of Fishing Hot Spots Inc.

Navionics® is a registered trademark of Navionics, Inc.

Navico may find it necessary to change or end our policies, regulations and special offers at any time. We reserve the right to do so without notice. All features and specifications subject to change without notice.

Compliance Statements

Lowrance Elite 4m HD

- complies with CE under RTTE directive 1999/5/EC
- complies with the requirements of level 2 devices of the Radiocommunications (Electromagnetic Compatibility) standard 2008

The relevant Declaration of Conformity information is available on the this unit's product page at www.lowrance.com.



WARNING: When a GPS unit is used in a vehicle, the vehicle operator is solely responsible for operating the vehicle in a safe manner. Vehicle operators must maintain full surveillance of all pertinent driving or boating conditions at all times. An accident or collision resulting in damage to property, personal injury or death could occur if the operator of a GPS-equipped vehicle fails to pay full attention to travel conditions and vehicle operation while the vehicle is in motion.








Table of contents

| | |
|-----------------------------|----------|
| Introduction..... | 3 |
| Unit Controls..... | 3 |
| Basic Operation..... | 5 |
| Setup wizard..... | 5 |
| Pages | 5 |
| Page menus | 5 |
| Dialogs..... | 7 |
| Entering text | 7 |
| Cursor..... | 7 |
| Goto cursor..... | 8 |
| Advanced Mode | 8 |

| | |
|--------------------------------|-----------|
| Restore defaults | 8 |
| Pages..... | 9 |
| Steer Page..... | 9 |
| Chart Page | 9 |
| Overlay Data..... | 10 |
| Chart Operation | 12 |
| Waypoints, Routes, Trails..... | 13 |
| Routes Screen..... | 15 |
| Trails Screen | 19 |
| Orientation | 21 |
| Overlay Data..... | 21 |

| | | | |
|--------------------------------------|-----------|-----------------------------|-----------|
| Settings..... | 21 | Saving Screenshots..... | 30 |
| Chart Settings..... | 22 | Alarms | 30 |
| Navigation Settings | 23 | Specifications | 32 |
| AIS..... | 25 | Index | 33 |
| AIS Setup | 25 | | |
| Target symbols | 26 | | |
| Viewing AIS target information | 27 | | |
| Settings | 28 | | |
| Settings menu..... | 28 | | |
| System..... | 28 | | |

Introduction

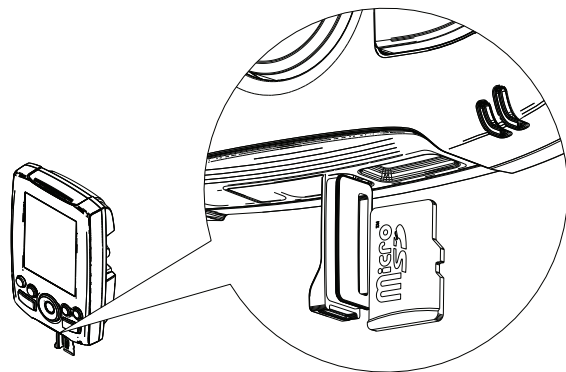
| Unit Controls | |
|--|--|
|  | LIGHT/POWER: controls backlight level and turns unit on/off |
|  | KEYPAD: controls cursor & selects items on menus |
|  | PAGES: allows you to select a page to view |
|  | MENU: opens settings, context and page menus |
|  | ENTER: finalizes menu selections; save waypoint at cursor position |
|  | MOB: press and hold both Zoom keys to create a Man Overboard waypoint |
|  | ZOOM KEYS: (+) used to zoom in; (-) used to zoom out |
| microSD slot: insert a blank microSD card to save screen captures, sonar logs, waypoints, routes and trails; or insert a microSD mapping card to use mapping data | |

| Getting Started | |
|--------------------------------|---|
| Turn unit on/off | To turn on/off the unit, press and hold the LIGHT/POWER key for three seconds. |
| Man Overboard waypoint | Press the ZOOM IN and ZOOM OUT keys at the same time to set a Man Overboard waypoint. Your system will automatically create an active route back to the MOB waypoint. You must cancel navigation to terminate the function. |
| Adjusting the backlight | This unit has 11 backlight levels. Press the LIGHT/POWER key to switch backlight levels. |
| Muting Audio | Select <i>Audio</i> from the System menu. Select <i>Mute</i> and press ENTER . |

Inserting microSD cards

Carefully slide the microSD card into the slot until it clicks into place.

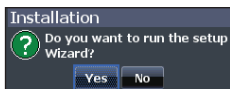
To remove, carefully push in the card until it clicks out of place.



Basic Operation

Setup wizard

The Setup wizard will appear when the unit is turned on for the first time. To choose your own settings, do not run the setup wizard. To restart the Setup wizard, restore defaults.



Pages

This unit has two pages: Steer and Chart. Press the **PAGES** key to switch pages.



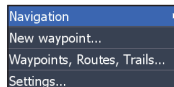
Page menus

The Steer and Chart pages have menus that can only be accessed when those pages are displayed.



Steer page

MENU



Steer menu

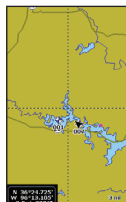


Chart page

MENU

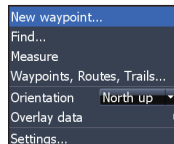
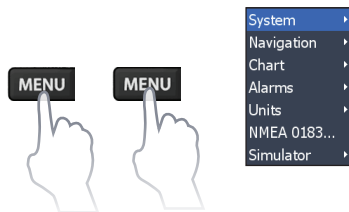


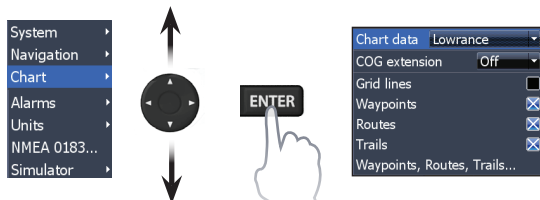
Chart menu

Accessing the Settings menu



Accessing menu items

The keypad and **ENTER** key are used to select menu items and open submenus. Use the keypad to highlight the desired item and press **ENTER**.



Working with menus

There are several menu types used to make adjustments to options and settings, including scrollbars, on/off features and dropdown menus.

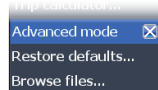
Scrollbars

Select the scrollbar and press the keypad left (decrease) or right (increase).



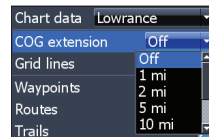
On/Off features

Select the on/off menu item and press **ENTER** to turn it on/off.



Dropdown menus

Access the dropdown menu and press the keypad up/down to select the desired item and press **ENTER**.





NOTE: Press the **MENU** key to exit menus.

Dialogs

Dialogs are used for user input or for presenting information to the user. Depending on the type of entry, different methods are used to confirm, cancel or close dialogs.



Entering text

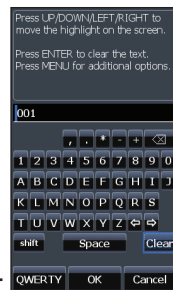
Some functions, like naming a waypoint, route or trail, will require you to input text.

To input text:

1. Use the keypad to select the desired character and press **ENTER**.
2. Repeat Step 1 for each character.
3. When entry is completed, highlight **OK** and press **ENTER**.

Switches letters to uppercase/lowercase

Switches keyboard between ALPHA and QWERTY layout



Cursor

The keypad moves the cursor around the display, allowing you to scroll the map and select map items.

Press **MENU** and select *Return to vessel* or *Exit cursor mode* to clear the cursor.

Goto cursor

Used to navigate to the cursor.

1. Move the cursor to a desired location and press **MENU**.
2. Select *Goto cursor* and press **ENTER**.

Advanced Mode

Enables advanced features and settings.

The following features are enabled when Advanced mode is turned on:

- Navigation (Enables arrival radius, off-course distance and Bearings setting)
- Alarms (Enables arrival, off course and anchor alarm options)
- NMEA 0183 configuration options
- Units (Enables distance, speed and bearings configuration options)

Standby mode

Lowers power consumption by turning off sonar and the display.

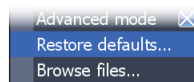
1. Press the **PWR/LIGHT** key to access the Backlight dialog.
2. Select *Standby* and press **ENTER**.
3. Press any key to resume normal operation.



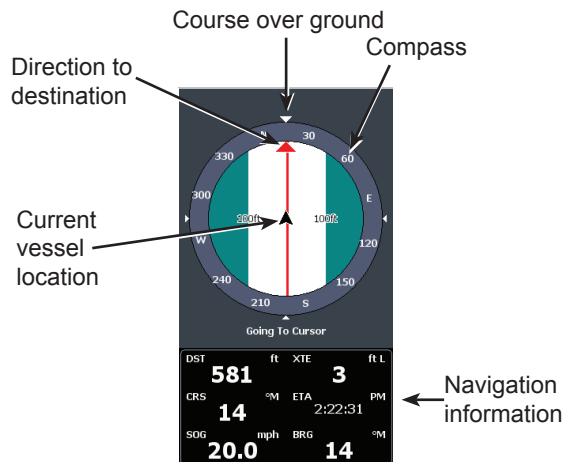
NOTE: *Leaving your unit in Standby mode when your boat is not in use will run down your battery.*

Restore defaults

Sets unit options and settings to default values.



Pages



Steer Page

The Steer page has a compass that shows your current track, the direction to your destination, and a digital data navigation panel.

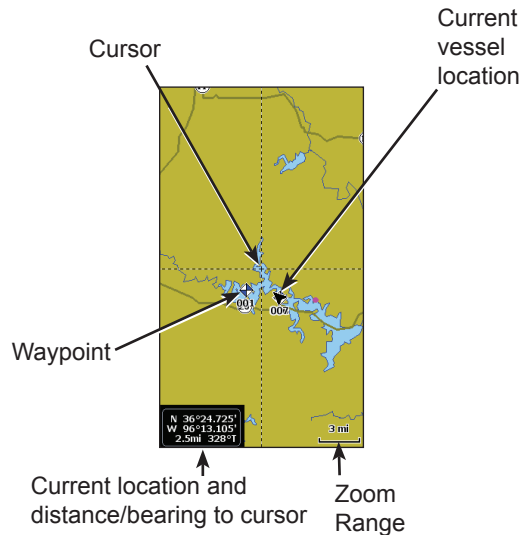
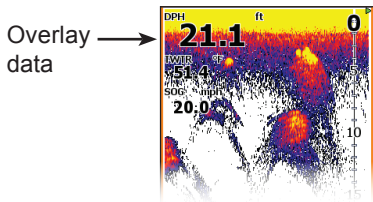


Chart Page

Consists of a map that moves in real-time as you move. By default, the map is shown from a birds-eye view with North at the top of the screen.

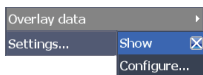
Overlay Data

Used to select data shown on the Chart page.



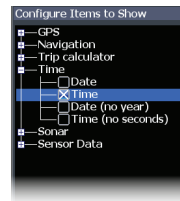
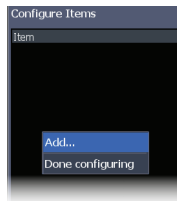
Show

Enables/disables the display of overlay data, allowing you to remove overlay data from the screen without deleting the current overlay data configuration.



Configure

Allows you to select/customize overlay data.

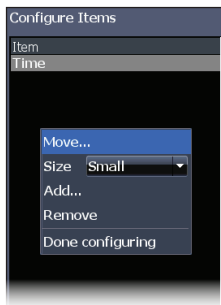


To add overlay data:

1. From the Chart page, press **MENU**.
2. Select *Overlay data* and press **ENTER**.
3. Select *Configure* and press **ENTER**.
4. Press *Menu* and select *Add*. Press **ENTER**.
5. Select a data category and press **ENTER**.
6. Select the desired data and press **ENTER**.
7. Repeat Steps 5 and 6 to add more data.
8. Press **MENU** and select *Return to Overlays*. Press **ENTER**.
9. Press **MENU**, select *Done Configuring* and press **ENTER**.

Customizing Overlay Data

You can add/remove data and adjust the size and position of overlay data on the screen.



1. Press **MENU** and select *Overlay data*.
2. Select *Configure* and press **ENTER**.
3. Highlight the desired overlay data and press **MENU**.
4. Select the desired configuration category to make adjustments.

Chart Operation

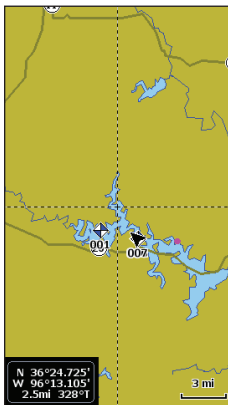
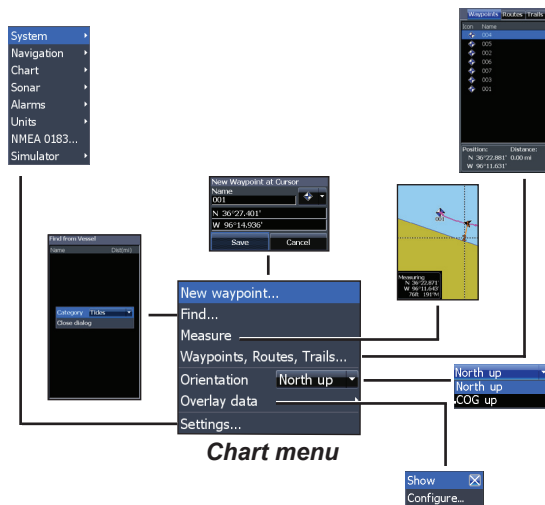


Chart Menu

Press **MENU** from the Chart page to open the Chart menu. Press **ENTER** to launch the New waypoint dialog.

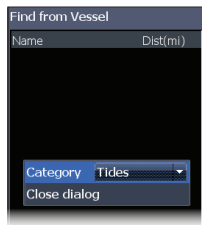


New Waypoint

Creates a waypoint at your current location or at the cursor position. When the cursor is on the screen, waypoints will be saved at the cursor position. If the cursor is not active, waypoints will be saved at your current position.

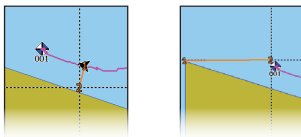
Find

Used to find tides and/or currents on the screen when the screen is cluttered with chart details.



Measure

The cursor can be used to measure the distance between two items on the chart.



To measure distance:

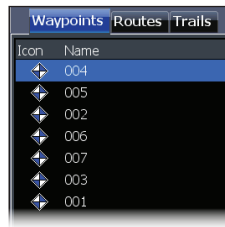
1. Select *Measure* and press **ENTER**.
2. Move the cursor to the desired location. The distance will be shown in the measuring dialog.

3. To measure from the cursor position to a new location, press **ENTER** and move the cursor to a new location.
4. To stop measuring, press **MENU** and select *Stop measuring*.

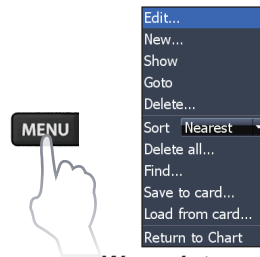
Waypoints, Routes, Trails

Used to create, edit, navigate and delete waypoints, routes and trails.

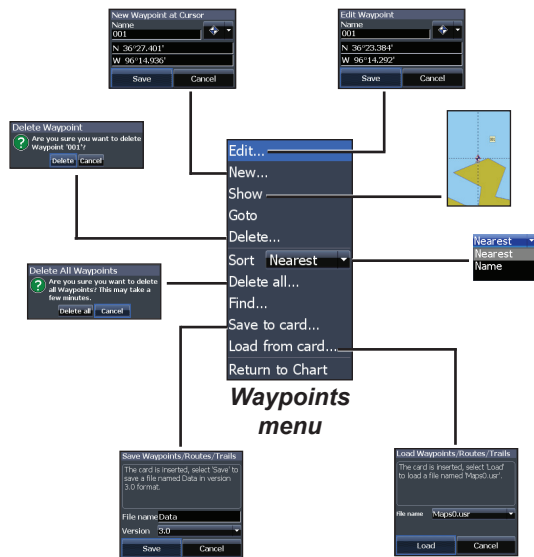
Press the keypad left/right to toggle between waypoints, routes and trails tabs.



Waypoints Screen



Waypoints menu



Waypoints menu

Edit

Allows you to edit the name, icon and latitude/longitude of a selected waypoint.



New

Creates a new waypoint at the cursor or vessel position. You can also select waypoint name, icon and latitude/longitude from the new waypoint dialog.



Show

Displays the selected waypoint on the map.

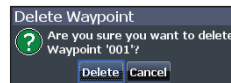


Goto

Allows you to navigate to a waypoint.

Delete and Delete All

Delete is used to delete a selected waypoint. Delete All deletes all waypoints.

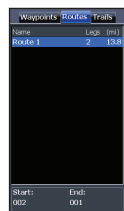


Sort

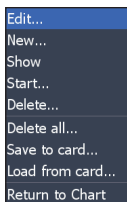
Controls how the waypoints list will be sorted — by name or by nearest.

Routes Screen

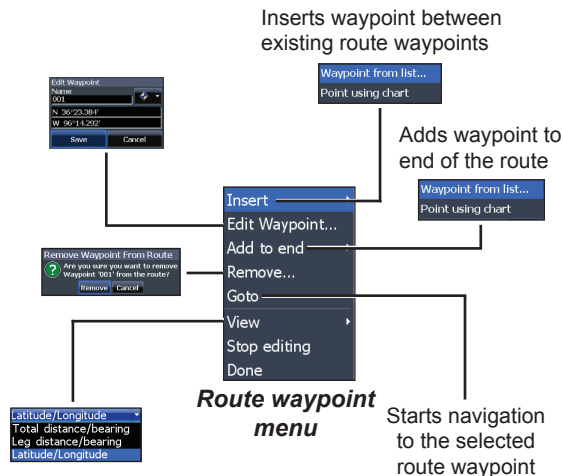
Used to create, edit, navigate and delete routes. Use the keypad to highlight the Routes tab to access the Routes screen.



Routes screen



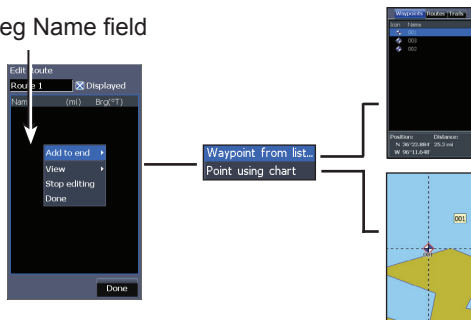
Routes menu



Creating a route

Routes can be created by inserting waypoints from the waypoints list or by using the cursor to position points on the chart. You also can add waypoints to a route by selecting them from the chart screen.

Leg Name field



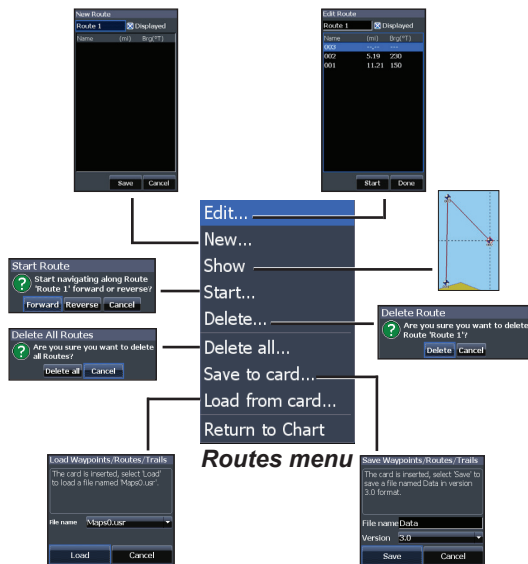
To create a route from waypoint list:

1. Press **MENU** from the Routes screen.
2. Select *New...* and press **ENTER**.
3. Press the keypad down to highlight the Leg Name field and press **ENTER**.
4. Press **MENU**, select *Add to End* and press **ENTER**.
5. Select *Waypoint from list* and press **ENTER**.
6. Select the desired waypoint and press **ENTER**.

7. Press **MENU** and select *Add to end* to add another waypoint to the route.
8. Repeat Steps 5-7 until the route is complete, press **MENU**, select *Stop Editing* and press **ENTER**.
9. Select *Save* and press **ENTER**.

Creating a route using points from chart:

1. Repeat Steps 1-4 from the instructions for Creating a route from waypoint list.
2. Select *Points using chart* and press **ENTER**. The chart page will appear.
3. Move the cursor to the desired location. Press **ENTER** to set a point.
4. Repeat Step 3 to add more points.
5. Press **MENU** and select *Stop adding*. Press **ENTER**.
6. Select *Save* and press **ENTER**.



Navigating a route

Routes can be navigated in forward or reverse.

1. Highlight the desired route on the Route screen and press **MENU**.
2. Select *Start* and press **ENTER**.

3. Select *Forward* or *Reverse* and press **ENTER**.
4. Press **MENU** and select *Return to Chart*. Press **ENTER**.

To cancel navigation:

1. Press *Menu* from the chart screen.
2. Select *Navigation* and press **ENTER**.
3. Highlight *Cancel* and press **ENTER**.
4. Select *Yes* and press **ENTER**.

Edit and New Route dialogs

Used to edit/create routes, route names and to turn on/off the route display.



Displays/hides route on the map

To edit/create a route, use the keypad to select the Route Leg Name field and press **ENTER**.



MENU



To access the “Edit” or “New Route” dialog, select **Edit** or **New** on the Routes menu and press **ENTER**.

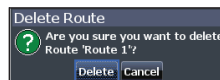
To finalize changes on the “Edit” or “New Route” dialogs, highlight the **Done** button and press **ENTER**.

Displayed

You can use the Displayed feature to declutter the screen when multiple routes are visible on the map display.

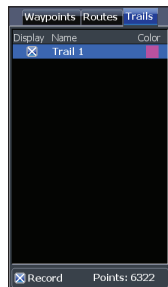
Delete and Delete All

Delete is used to delete individual routes. Delete All, removes all routes.

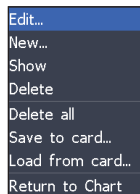


Trails Screen

Used to create, edit, navigate and delete trails. Use the keypad to highlight the Trails tab to access the Trails screen.



Trails screen



Trails menu



Trails menu

Creating trails

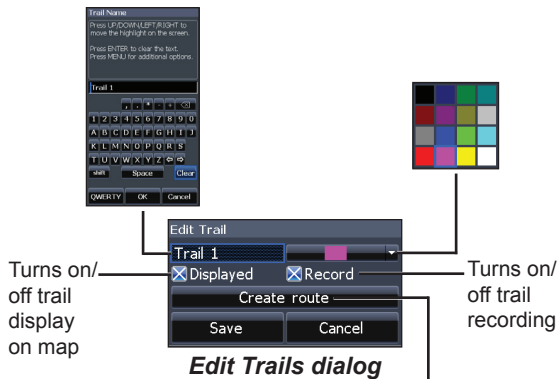
When creating a trail you can customize the trail name and color from the New Trail.

To create a trail:

1. Select *New* and press **ENTER**. The New Trail dialog will appear.
2. Select *Save* and press **ENTER**.

Edit and New Trail dialogs

Allows you to edit/create trails, select trails names, trail color, trail display and the trail being recorded. You can also convert a trail into a route from the Edit Trails dialog.



Navigating a trail

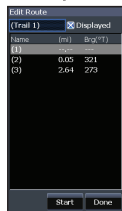
A trail must be saved as a route before it can be navigated.

To save a trail as a route:

1. Highlight the desired trail on the Trails screen and press **ENTER**. The Edit Trail menu will appear.
2. Highlight *Create Route* and press **ENTER**. The Edit Route menu will appear.
3. Highlight *Done* and press **ENTER**.
4. For navigation instructions refer to the "Navigating a route" segment.

Displayed and Record

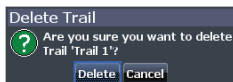
You can use the Displayed feature to declutter the screen when multiple trails are visible on the map display.



The Record command allows you to record or resume recording a trail.

Delete and Delete All

Delete is used to remove individual trails. Delete All removes all trails.

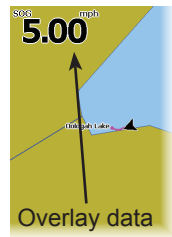


Orientation

Allows you to select North Up or Course Over Ground (COG) as the map orientation.

Overlay Data

Allows you to select data to be displayed on top of the Chart page.



Overlay data setup is covered in the “Pages” section.

Settings

Accesses the “Chart settings” menu.

Chart Settings

Controls map data used on the chart screen as well as display settings like grid lines, waypoints, routes and trails.

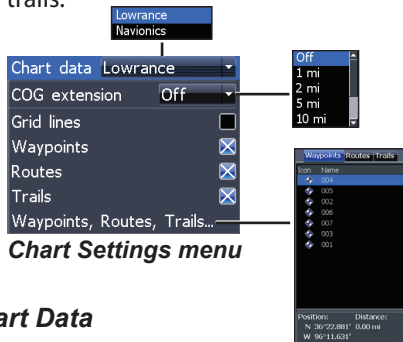


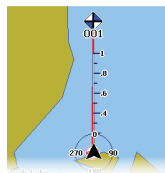
Chart Settings menu

Chart Data

Selects map data that will be used on the Chart display (Lowrance or Navionics regional map). Go to Navionics.com to see a full selection of available charts.

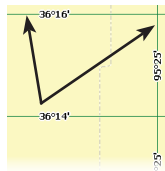
COG Extension

A line extending from the front of the current position icon that estimates the time and distance to areas in front of you.



Grid Lines

Displays base values for latitude and longitude, making it easier to get a general idea of your location on the latitude/longitude scale.



Waypoints, Routes and Trail displays

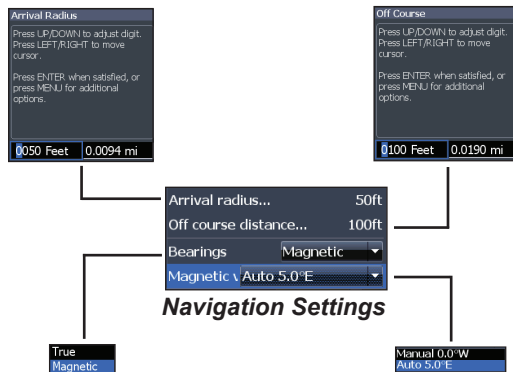
From the Chart Settings menu, you can turn on/off waypoint, route and trail display properties. Turning off display properties allows you to get a better view of the map, if the screen becomes cluttered with waypoints, routes and/or trails.

Waypoints, Routes, Trails

Accesses the Waypoints, Routes & Trails screen.

Navigation Settings (Advanced mode only)

Controls Arrival Radius and Off Course distance settings and is used to turn on/off WAAS/MSAS/EGNOS.



Arrival Radius

Sets the arrival radius threshold for the Arrival alarm. The arrival alarm will sound when your vessel comes within a selected distance (arrival radius) of the destination waypoint.

Off Course Distance

Sets Off Course Distance threshold for the Off Course alarm. When the selected off course distance is exceeded, the Off Course alarm will sound when the alarm is enabled.

Bearings

Controls whether bearing will be calculated using True North or Magnetic North. Magnetic North should be used when navigating with a compass course or heading; otherwise use the default setting, True North.

Magnetic Variation

Controls whether magnetic variation will be calculated using Automatic or Manual settings. Magnetic variation is the angle between magnetic north and true north. The automatic setting reconciles the variation for you.

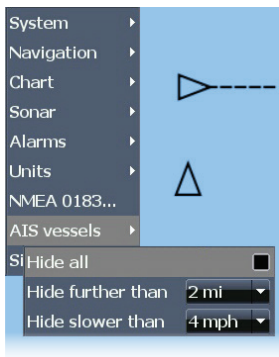


WARNING: *You should only use the Manual magnetic variation setting if you have variation information from a verified source.*

AIS

The marine Automatic Identification System (AIS) is a location and vessel information reporting system. It allows vessels equipped with AIS to automatically receive position, speed, course and vessel identity information from other AIS-equipped vessels.

If an AIS device is connected, all targets detected by the device can be displayed.



AIS Setup

Before using AIS, your unit must be set to the same Baud rate as your AIS device.



NOTE: Your unit must be set to *Advanced mode* to access NMEA 0183 settings.




To select a Baud rate:

1. Access the settings menu.
2. Select **NMEA 0183**.
3. Access the Baud rate dropdown menu on the NMEA 0183 settings dialog.
4. Select the same Baud rate used by your AIS device.
5. Select **Save**.



Target symbols

The unit uses the AIS target symbols shown below:

| Symbol | Description |
|---|--|
|  | Stationary AIS target |
|  | Moving AIS target with (COG) course extension line The extension line always represents the target's course over ground and is set to 10 minutes by default. |
|  | Lost AIS target When no signals have been received within a time limit a target will be defined as lost. The target symbol represents the last valid position of the target before the reception of data was lost. |

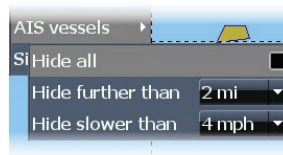


NOTE: If you receive heading data from an AIS vessel, the orientation of the vessel icon represents its heading. If heading data is not received, the orientation of the vessel icon represents its course over ground (COG).

Filtering the targets

All targets, by default, are shown on the display if an AIS device is connected to your unit.

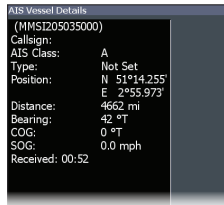
You can hide all targets, or filter the target icons based on distance and vessel speed.



Viewing AIS target information

When you place the cursor on an AIS icon the MMSI number or vessel name (if available) will be displayed.

You can view detailed information about a target by selecting the target and pressing **ENTER**. The AIS Vessel detail dialog will appear.

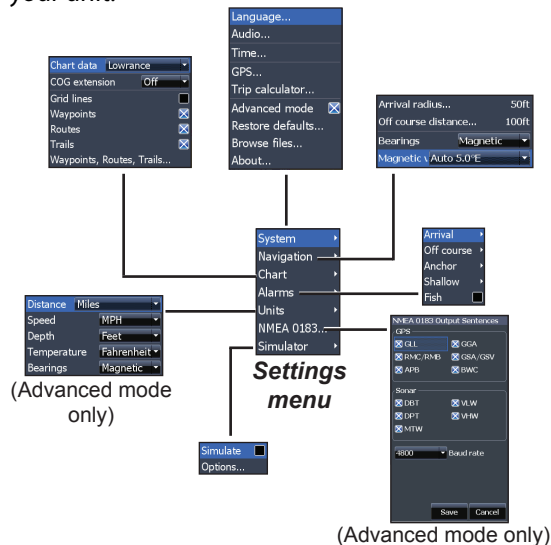


AIS Vessel detail dialog

Settings

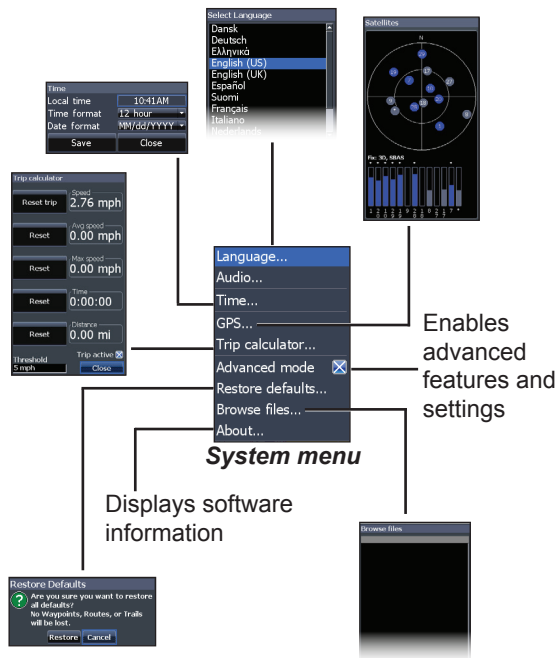
Settings menu

Accesses installation and configuration settings for your unit.



System

Adjusts unit settings like language, mute audio and advanced mode.



Set Language

Selects the language used on menus and text boxes.



Audio

Adjusts volume and turns on/off unit audio, like key beeps, alarm sounds, etc.

GPS

Monitors the location of satellites in view and the quality of the unit's satellite lock-on. GPS Source, WAAS/MSAS/EGNOS and Time features are accessed from the GPS dialog.



WAAS/MSAS/EGNOS

Turns on/off WAAS, MSAS and EGNOS.

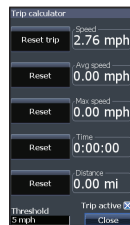
All three systems help increase GPS accuracy for different parts of the world.

Time

Used to set local time, and time and date formats for your unit.

Trip Calculator

Tracks trip time, speed and distance when you are moving faster than the selected threshold.



Advanced Mode

Enables features and settings only available with unit in Advanced Mode.

Restore Defaults

Switches the unit back to default settings.

Browse Files

Allows you to view a list of the files saved to a microSD card.

Saving Screenshots

You can save screenshots to a microSD card by inserting a microSD card into the card slot and pressing Power and then Zoom (+).

You can view files on a computer or other microSD compatible device.

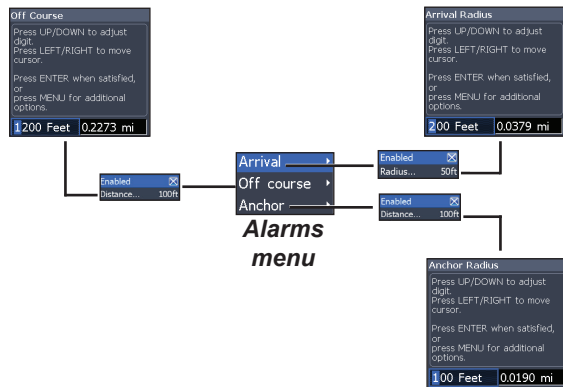
About

Displays software information about this unit. Before attempting a software update, you can check the version of software your unit is using by accessing the About screen.

Lowrance periodically updates unit software to add features and improve functionality. To see the latest available software version go to www.lowrance.com.

Alarms

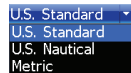
Enables alarms and selects alarm thresholds. “Arrival,” “Off Course” and “Anchor” alarms are only available in Advanced mode.



| Alarms | |
|-------------------|--|
| Arrival | sounds alarm when you are within a selected distance of your destination (Advanced Mode only) |
| Off Course | sounds alarm when course exceeds a selected off-course threshold (Advanced Mode only) |
| Anchor | sounds alarm when vessel moves a selected distance (Advanced Mode only) |

Units

Allows you to select the unit of measure used by the unit. Unit options vary depending on whether the unit is in basic or advanced mode.



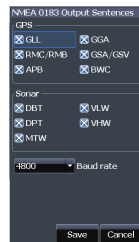
Basic Mode



Advanced Mode

NMEA 0183 Output (Advanced mode only)

You can select the NMEA 0183 sentences the unit will use when connected to a VHF radio or other NMEA 0183 device.



You can also adjust the Baud rate, but the default setting works best under most conditions.

Simulator

Simulates GPS activity. Simulations can be customized on the Simulator options menu.

| Elite-4m HD | |
|----------------------------|---|
| General | |
| Case Size | 6.6" H (168 mm) x 3.8" W (96 mm); 7.5" H (189 mm) with bracket |
| Display | 4.3" diagonal 16-bit color TFT LCD |
| Waterproof standard | IPX7 |
| Backlight | LED (11 levels) |
| Communications | NMEA 0183 input/output |
| Power | |
| Transmit Power | 250W RMS; 30,000 PTP |
| Power Requirement | 12V |
| Voltage Input | 10 to 17V |
| Current drain | Typical: .75A |
| Fuse type | 3-amp Automotive |

| GPS | |
|---------------------------------------|--|
| Mapping card slot | microSD and microSDHC |
| GPS Antenna | High accuracy GPS antenna (internal only) |
| Mapping compatibility | Fishing Hot Spots & Navionics (Hotmaps, Premium and Gold) CMap Max N, Insight Pro & HD plus Insight Genesis |
| Waypoints, Routes & Trails | Up to 3000 waypoints, 100 routes/100 waypoints per route, 100 retraceable plot trails/up to 10,000 points per trail |

Index

A

- About 30
- Advanced Mode 8
- AIS 25
 - Filtering targets 26
 - Target symbols 26
 - Vessel detail dialog 27
- Alarms 30
- Anchor alarm 31
- Arrival alarm 31
- Arrival Radius 24

B

- Bearings 24
- Browse Files 30

C

- Cancel navigation 17
- Chart 22
- Chart Data 22
- Chart menu 22
- Chart Page 9
- COG Extension 22
- Creating a route 15
- Creating trails 19

D

- Data Port 29
- Dialogs 7
- Dropdown menus 6

E

- Editing waypoints 14

G

- Goto cursor 8
- Goto waypoint 14
- GPS Source 29
- GPS Status 29
- Grid Lines 22

L

- Language 29

M

- Magnetic Variation 24

- Man Overboard waypoint 3
- microSD cards 4
- Mute Audio 29

N

- Navigating a route 16
- Navigating a trail 20
- Navigation 23
- Navigation menu 23
- New Waypoint 12
- NMEA 0183 31

O

- Off Course alarm 31
- Off Course Distance 24
- On/Off features 6

Orientation 21
Overlay Data 10, 21
 Configure 10
 Customizing 11
 Show 10

P

Page menus 5

R

Route display 23
Routes Screen 15

S

Saving Screenshots 30
Scrollbars 6
Setup wizard 5

Software Updates 30
Sort waypoints 15
Standby mode 8
Steer Page 9
System settings 28

T

Text entry 7
Time 29
Trail display 23
Trails Screen 19
Turn unit on/off 3

U

Unit Controls 3
Units 31

W

WAAS/MSAS/EGNOS
 29
Waypoint display 23
Waypoints, Routes,
 Trails 13
Working with menus 6

Navico Databases License Agreement

THIS IS A LEGAL AGREEMENT BETWEEN THE END-USER WHO FIRST PURCHASES THIS PRODUCT AS A CONSUMER ITEM FOR PERSONAL, FAMILY, OR HOUSEHOLD USE (“YOU”) AND NAVICO, THE MANUFACTURER OF THIS PRODUCT (“WE”, “OUR”, OR “US”).

USING THE PRODUCT ACCOMPANIED BY THIS LICENSE AGREEMENT CONSTITUTES ACCEPTANCE OF THESE TERMS AND CONDITIONS.

IF YOU DO NOT ACCEPT ALL TERMS AND CONDITIONS, PROMPTLY RETURN THE PRODUCT WITHIN 30 DAYS OF PURCHASE. PLEASE RETURN USING THE ENCLOSED UPS SHIPPING LABEL AND INCLUDE: PROOF OF PURCHASE, NAME, ADDRESS, AND PHONE NUMBER. YOUR PURCHASE PRICE AND ANY APPLICABLE TAXES WILL BE REFUNDED. PLEASE ALLOW 4-6 WEEKS TO PROCESS YOUR REFUND.

1. This License Agreement applies to the one or more databases that your product may contain. We refer to these singly as a “Database” and together as the “Databases.” Your product may thus include the “WBS Database” which contains worldwide background surface mapping data, the “Indigo Database” which contains inland mapping data, or other Databases.
2. The Databases that your product may contain are licensed, not sold. We grant to you the nonexclusive, nonassignable right to use these Databases for supplemental navigation reference purposes, but only as long as you comply with the terms and conditions of this License Agreement. We reserve the right to terminate this license if you violate any aspect of this License Agreement. You are responsible for using official government charts and prudent navigation for safe travel.
3. The Databases housed in your product are protected by the copyright notices appearing on the product or its screen(s). You may NOT modify, adapt, translate, reverse engineer, decompile, disassemble, rent, lease, or resell any Database, and you may NOT create derivative works based upon any Database or its contents. Any unauthorized reproduction, use, or transfer of a Database may be a crime and may subject you to damages and attorney fees.
4. This License Agreement will terminate immediately without prior notice from us if you fail to comply with or violate any of the provisions of this Agreement. Upon termination, you will promptly return all products containing one or more Databases to us.
5. Prices and programs are subject to change without notice.
6. This License Agreement shall be governed by the laws of the State of Oklahoma and comprises the complete and exclusive understanding between you and us concerning the above subject matter.

Databases Limited Warranty

“We”, “our”, or “us” refers to Navico, the manufacturer of this product. “You” or “your” refers to the first person who purchases the product as a consumer item for personal, family, or household use. The Databases Limited Warranty applies to the one or more databases that your product may contain. We refer to each of these as a “Database” or together as the “Databases.” Your product may thus include the “WBS Database” which contains worldwide background surface mapping data, the “Indigo Database” which contains inland mapping data, or other Databases.

We warrant to you that we have accurately compiled, processed, and reproduced the portions of the source material on which the Databases are based. However, we are under no obligation to provide updates to the Databases, and the data contained in the Databases may be incomplete when compared to the source material. WE MAKE NO EXPRESS OR IMPLIED WARRANTY OF ANY KIND ABOUT THE ACCURACY OF THE SOURCE MATERIAL ITSELF, INCLUDING BUT NOT LIMITED TO IMPLIED WARRANTIES OF MERCHANTABILITY OR FITNESS FOR A PARTICULAR PURPOSE.

If there is a defect in any Database, your exclusive remedy shall be, at our option, either a refund of the price you paid for the product containing the defective Database or a replacement of such product. WE WILL NOT UNDER ANY CIRCUMSTANCES BE LIABLE TO ANYONE FOR ANY SPECIAL, CONSEQUENTIAL, INCIDENTAL, OR OTHER INDIRECT DAMAGE OF ANY KIND.

Some states do not allow the exclusion or limitation of incidental or consequential damages, so the above limitations or exclusions may not apply to you.

This warranty does NOT apply in the following circumstances: (1) when the product has been serviced or repaired by anyone other than us; (2) when the product has been connected, installed, combined, altered, adjusted, or handled in a manner other than according to the instructions furnished with the product; (3) when any serial number has been effaced, altered, or removed; or (4) when any defect, problem, loss, or damage has resulted from any accident, misuse, negligence, or carelessness, or from any failure to provide reasonable and necessary maintenance in accordance with the instructions of the owner’s manual for the product.

We reserve the right to make changes or improvements in our products from time to time without incurring the obligation to install such improvements or changes on equipment or items previously manufactured.

This warranty gives you specific legal rights and you may also have other rights which may vary from state to state.

Your remedies under this warranty will be available so long as you can show in a reasonable manner that the defect occurred within one (1) year from the date of your original purchase, and we must receive your warranty claim no later than 30 days after such 1-year period expires. Your claim must be substantiated by a dated sales receipt or sales slip.

Contact information

Customer Service:

1-800-628-4487

(8:30 a.m. to 5 p.m. Central Standard Time, M-F)

(Canada)

1-855-361-1564

canada@navico.com

(8 a.m. to 5 p.m. Eastern Standard Time, M-F)

Ordering Accessories

<http://store.navico.com/>

Visit our website

www.lowrance.com

Visit our website:

www.lowrance.com

