

LOWRANCE®



Elite-3x DSI

Operation manual

Copyright © 2014 Navico

All rights reserved.

Lowrance® and Navico® are registered trademarks of Navico.

Navico may find it necessary to change or end our policies, regulations and special offers at any time. We reserve the right to do so without notice. All features and specifications subject to change without notice.

Compliance Statement:

Lowrance Elite-3x DSI







- Comply with CE under EMC directive 2004/108/EC
- Comply with the requirements of level 2 devices of the Radiocommunications (Electromagnetic Compatibility) standard 2008.

The relevant Declaration of Conformity is available in the following website under model documentation section: <http://www.lowrance.com>.



WARNING: It is your sole responsibility to install and use this instrument in a manner that will not cause accidents, personal injury or property damage. Always observe safe boating practices.

Introduction

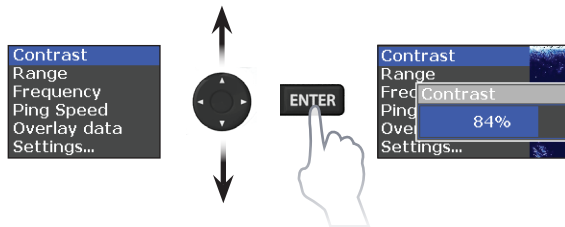
Unit Controls	
	LIGHT/POWER: controls backlight level and turns unit on/off
	KEYPAD: controls cursor & selects items on menus
	FREQUENCY: changes the transducer frequency
	MENU: opens settings and page menus
	ENTER: finalizes menu selections
	ZOOM KEYS: (+) zooms in display; (-) zooms out display

Getting Started	
Turn unit on/off	To turn on/off the unit, press and hold the LIGHT/POWER key for three seconds.
Adjusting the backlight	Press the LIGHT/POWER key to switch backlight levels. This unit has 11 backlight levels.
Muting audio	Select Audio from the Settings menu to turn on/off unit audio.

Basic Operation

Accessing menu items

The keypad and **ENTER** key are used to select menu items and open submenus. Use the keypad to highlight the desired item and press **ENTER** to open its submenu or dialog.



NOTE: Press the **MENU** key to exit menus.

Dialogs

Dialogs are used for user input or for presenting information to the user.

Depending on the type of entry, different methods are used to confirm, cancel or close the dialog.



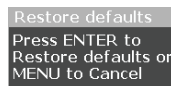
Cursor

The keypad moves the cursor on the display.

Restore defaults

Resets the unit to default settings.

Restore defaults is accessed on the Settings menu.



DownScan Operation



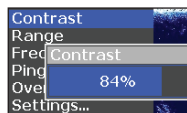
DownScan menu

Press **MENU** from the DownScan page to view the DownScan menu.

- Contrast
- Range
- Frequency
- Ping Speed
- Overlay data
- Settings...

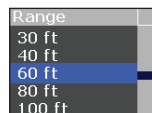
Contrast

Adjusts the brightness ratio between light and dark areas on the screen, making it easier to distinguish suspended objects from the background.



Range

Range settings display the section of the water column from the water surface to the selected depth range.



Frequency

Controls the transducer frequency used by the unit. 800 kHz offers the best resolution, while 455 kHz has greater depth coverage.

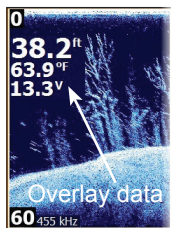


Ping Speed

Controls the rate the unit uses to send sonar waves into the water. Ping speed adjustments can help reduce interference from other transducers.

Overlay Data

Allows you to select data to be displayed on top of the DownScan page.

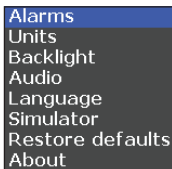


Settings

Accesses the Settings menu.

Settings

Settings menu



Alarms

Enables alarms and selects alarm thresholds.

Alarms	
Deep	Sounds the alarm when the vessel enters water deeper than the selected threshold
Shallow	Sounds the alarm when the vessel enters water shallower than the selected threshold
Low battery	Sounds the alarm when voltage falls below the selected threshold

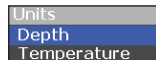
To input threshold values:

1. Select Set Value
2. Press the keypad up or down to increase/decrease the numerical value.
3. Press the keypad left/right to select the previous/next digit.



Units

Selects the unit of measure used for depth and temperature (Metric or US Standard).



Backlight

Adjusts the brightness of the backlight. This unit has 11 backlight levels. The backlight can also be adjusted by tapping the Light/Power key.

Audio

Turns on/off unit audio.

Language

Selects the language used on menus, dialogs and text boxes. The unit will restart when the language is changed.

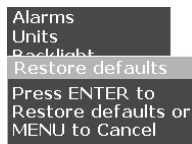
Simulator

Simulates sonar activity allowing you to become familiar with the unit before taking it out on the water.



Restore Defaults

Resets the unit to default settings.



About

Displays software information about the unit.

Elite-3x DSI	
General	
Case Size	5.4" H (134 mm) x 6.8" W (174 mm); 6" H (152 mm) with bracket
Display	(3.5" (8.9 mm) diagonal) 256 color TFT LCD
Waterproof standard	IPX7
Backlight	LED (11 levels)
Power	
Transmit Power	350W RMS
Power Requirement	12V
Voltage Input	10 to 17V
Fuse type	3-amp Automotive (not supplied)
Sonar	
Max depth	400ft (122 m)
Transducer Frequency	455/800 kHz
Max speed	70 mph
Transducer	455/800 kHz DSI transducer
Transducer cable	20 ft (6 m)

Contact information

Customer Service:

1-800-628-4487

(8 a.m. to 5 p.m. Central Standard Time, M-F)

(Canada)

1-855-361-1564

canada@navico.com

(8 a.m. to 5 p.m. Eastern Standard Time, M-F)

Ordering Accessories

<http://store.navico.com/>

Visit our website

www.lowrance.com

Visit our website:

www.lowrance.com

