



# Camera

App Guide

English

Software version: 2.1



NSS® 4 | Zeus® SR

NSX® | Zeus® S

## Copyright

©2025 Navico Group. All Rights Reserved. Navico Group is a division of Brunswick Corporation.

## Trademarks

®Reg. U.S. Pat. & Tm. Off, and ™ common law marks. Visit [www.navico.com/intellectual-property](http://www.navico.com/intellectual-property) to review the global trademark rights and accreditations for Navico Group and other entities.

- Brunswick® is a trademark of Brunswick Corporation.
- Navico® is a trademark of Navico Group.
- B&G® is a trademark of Navico Group.
- Simrad® is a trademark of Kongsberg Maritime AS, licensed to Navico Group.
- NSS® is a trademark of Navico Group.
- NSX® is a trademark of Navico Group.
- Zeus® is a trademark of Navico Group.
- FLIR® is a trademark of FLIR Systems, Inc.

## Warranty

This product's warranty is supplied as a separate document.

## Safety, disclaimer and compliance

This product's safety, disclaimer and compliance statements are supplied as a separate document.

## Internet usage

Some features in this product use an internet connection to perform data downloads and uploads. Internet usage via a connected mobile/cell phone internet connection or a pay-per-MB type internet connection may require large data usage. Your service provider may charge you based on the amount of data you transfer. If you are unsure, contact your service provider to confirm rates and restrictions.

## More information

Document version: 001

This document was prepared using software version 2.1.

Features described in this document may vary from your unit due to connected devices, settings, brand, and continuous software development.

For the latest version of this document in supported languages, and other related documentation, visit [www.simrad-yachting.com/downloads](http://www.simrad-yachting.com/downloads) or [www.bandg.com/downloads](http://www.bandg.com/downloads).

## Contact us

For product support and service information, visit [www.simrad-yachting.com/contact-us](http://www.simrad-yachting.com/contact-us) or [www.bandg.com/contact-us](http://www.bandg.com/contact-us).

# CONTENTS

---

- 4 Overview
- 4 Connecting an IP camera
- 4 Camera screen
- 5 Camera modes
- 6 Camera source
- 7 FLIR® M232 Thermal Camera support
- 8 FLIR® camera settings
- 9 Camera app settings

# OVERVIEW

The **IP Camera** app allows you to view video feeds from IP (Internet Protocol) cameras connected to your system.

## CONNECTING AN IP CAMERA

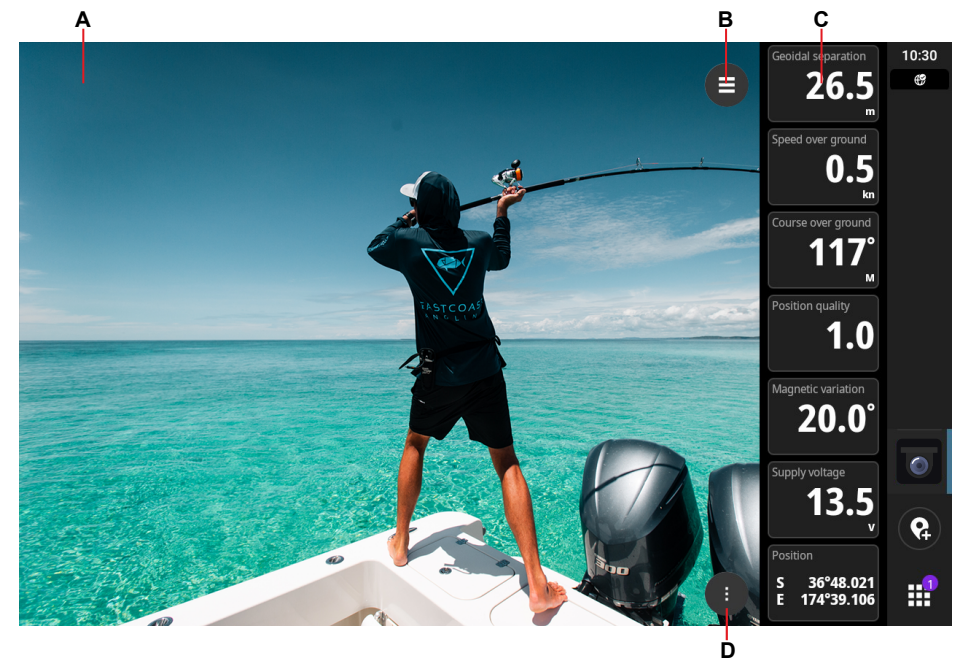
The **IP CAM-1** marine camera can be connected to the Ethernet network as a 'plug-and-play' device - no special setup is required. Connected cameras are displayed in the **Camera source** list.

Refer to the **IP CAM-1 Installation guide** for installation instructions (included in camera packaging).

→ **Note:** *IP CAM-1 marine camera is sold as an accessory. Contact your nearest retailer.*

## CAMERA SCREEN

A live video from a connected IP camera displays alongside an instrument bar.



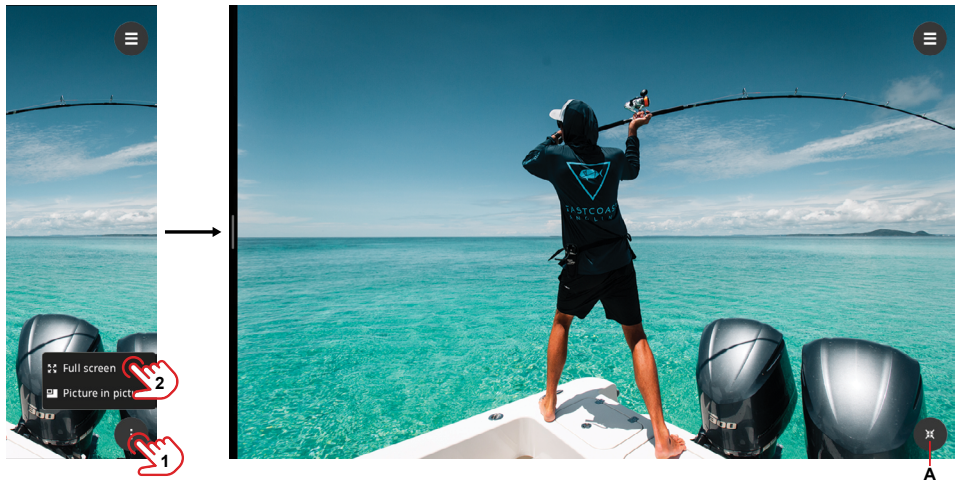
- A Live camera feed
- B Settings button
- C Instrument bar
- D Mode button

# CAMERA MODES

The app has two modes: **Full screen** and **Picture in picture**.

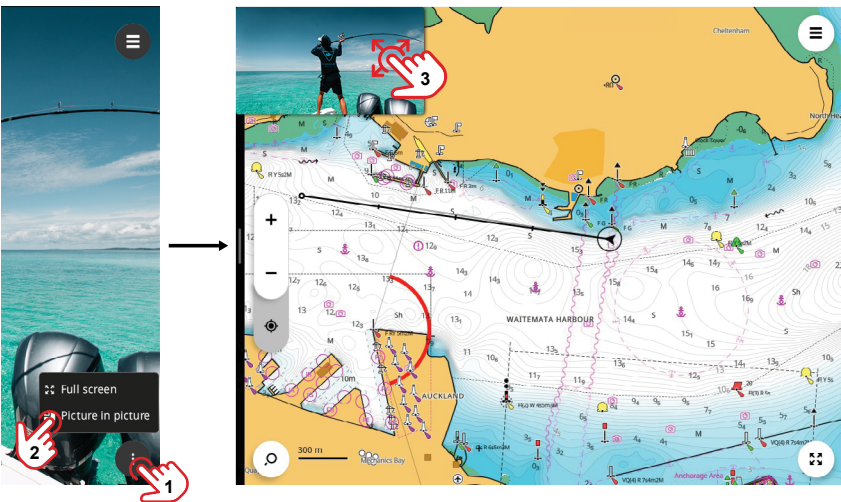
## Full screen mode

To expand the video to full screen, select the mode button (1), then **Full screen** (2). Select the resize button (A) to exit full screen mode.



## Picture in picture mode

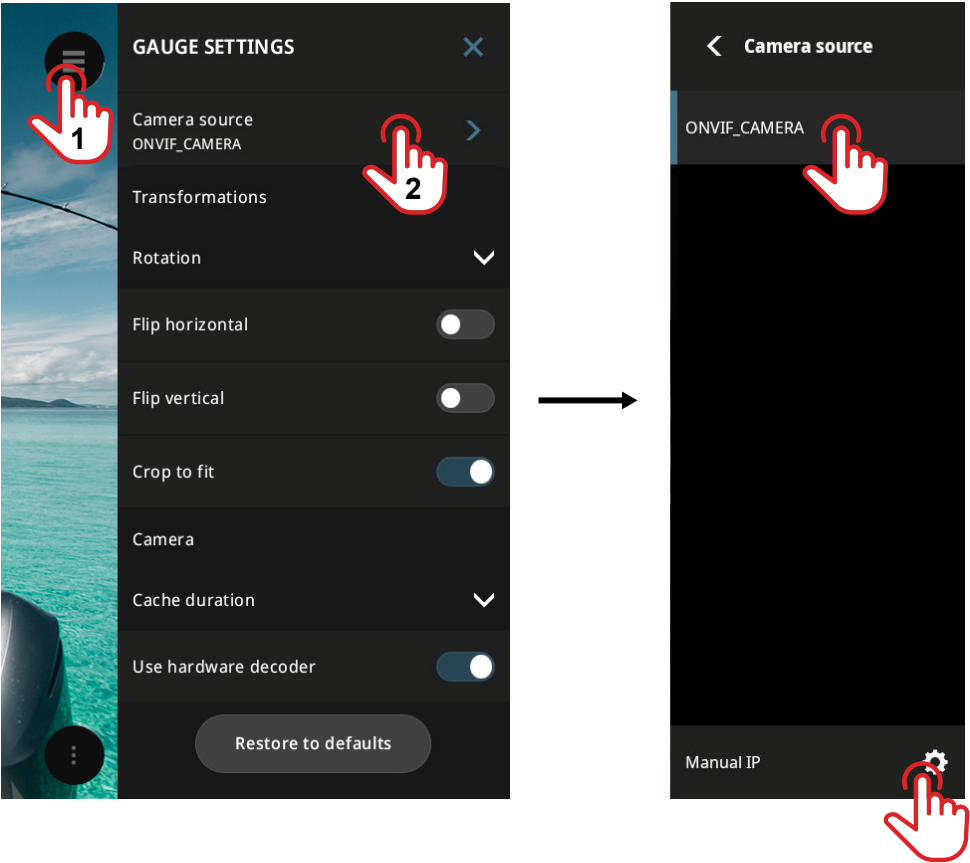
Picture in picture mode allows you to view the live video overlay on another app. Select the mode button (1), then **Picture in picture** (2). You can then launch another app and the video will continue to play on top. Drag the video frame (3) to reposition it. To exit picture in picture mode, return to the IP Camera app and select **Stop**.



# CAMERA SOURCE

If more than one camera is available on the network, by default, the app connects to the first camera in the list.

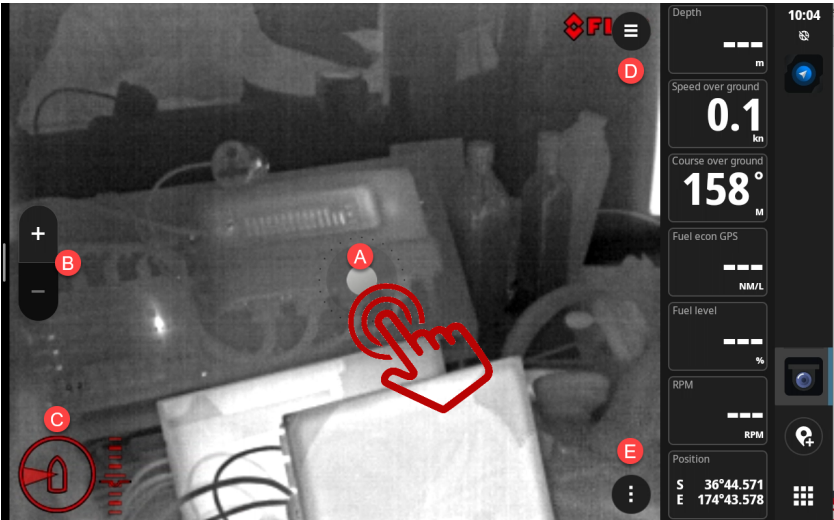
To select a different camera, select settings (1), select **Camera source** (2), then the camera from the list.



➔ **Note:** Use the **Manual IP** setting to set up a third party-manufactured camera connected to your system. Follow the on-screen prompts to set up the camera.

# FLIR® M232 THERMAL CAMERA SUPPORT

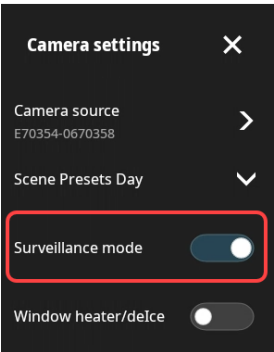
Your device supports FLIR® 232 IP cameras connected to your network via Ethernet.



- A Touching the screen will bring up the direction cursor, drag your finger over the screen in the direction you want to move the camera.  
→ **Note:** Navigate to the camera **Menu > Pilot mode** options to change the settings for inverted installation.
- B Zoom in / Zoom out
- C Camera direction and altitude indicator (works when there is no rotation or flip)
- D Menu
- E Option button — select between full screen or picture in picture views.

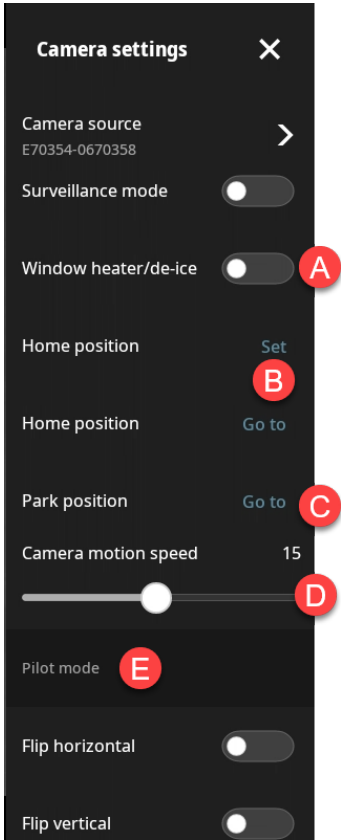
## Surveillance mode



The camera will sweep left and right approximately 45 degrees on either side of the starting viewpoint. Turn this on in the settings.



# FLIR® CAMERA SETTINGS

The below settings are available when a FLIR® camera is connected to your system.

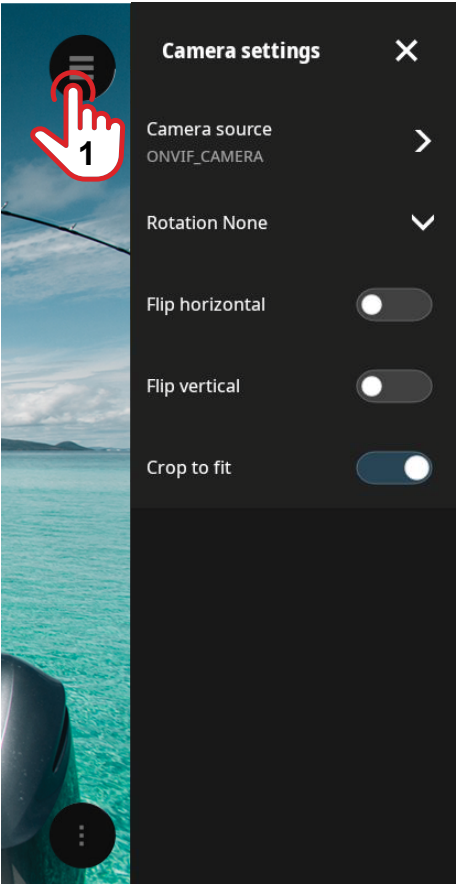


- A** Window heater/de-ice — Turns on the built-in heater in the camera to clear any fogging or ice on the lens.
  - B** Home position > Set — To set, move the camera to point in the desired direction.  
Press **SET**. A  icon will flash when the camera pan and tilt locations are recorded in memory.  
Home position > Go to — Returns to the camera to point to the preset Home position.
  - C** Park position > Go to — Returns to the camera's default park position and turns off camera. A  icon appears on the screen.
  - D** Camera motion speed — Alters the speed that the camera moves between 0-30.
  - E** Pilot mode — Flips the orientation of on-screen joy stick either horizontally or vertically.
- ➔ **Note:** Support for FLIR 300-series thermal cameras is available on NSO 4 and Zeus SR devices only. The settings menu will automatically display appropriate options.



# CAMERA APP SETTINGS

Camera setting options vary based on the IP camera connected to your system.



## Rotation

Select to rotate the video on the screen. Choose from **90°**, **180°**, and **270°**.

## Flip horizontal/Flip vertical

Select to flip the video horizontally and/or vertically. Useful when the camera is mounted on the side or upside down.

## Crop to fit

Select to crop the image (zoom in) to fill the screen.

→ **Note:** The options available in the settings depends on the camera type connected to your system.

## **Restore to defaults**

Select to restore the app settings to their factory defaults.

