

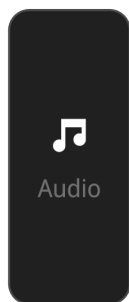


Audio Controller

App Guide

English

Software version: 2.1



NSS® 4 | Zeus® SR

NSX® | Zeus® S

Copyright

©2025 Navico Group. All Rights Reserved. Navico Group is a division of Brunswick Corporation.

Trademarks

®Reg. U.S. Pat. & Tm. Off, and ™ common law marks. Visit www.navico.com/intellectual-property to review the global trademark rights and accreditations for Navico Group and other entities.

- Brunswick® is a trademark of Brunswick Corporation.
- Navico® is a trademark of Navico Group.
- B&G® is a trademark of Navico Group.
- Simrad® is a trademark of Kongsberg Maritime AS, licensed to Navico Group.
- NSS® is a trademark of Navico Group.
- NSX® is a trademark of Navico Group.
- Zeus® is a trademark of Navico Group.
- Bluetooth® is a trademark of Bluetooth SIG, Inc.
- SiriusXM® is a trademark of Sirius XM Radio Inc.
- SonicHub® is a trademark of Navico Group.

Warranty

This product's warranty is supplied as a separate document.

Safety, disclaimer and compliance

This product's safety, disclaimer and compliance statements are supplied as a separate document.

Internet usage

Some features in this product use an internet connection to perform data downloads and uploads. Internet usage via a connected mobile/cell phone internet connection or a pay-per-MB type internet connection may require large data usage. Your service provider may charge you based on the amount of data you transfer. If you are unsure, contact your service provider to confirm rates and restrictions.

More information

Document version: 001

This document was prepared using software version 2.1.

Features described in this document may vary from your unit due to connected devices, settings, brand, and continuous software development.

For the latest version of this document in supported languages, and other related documentation, visit www.simrad-yachting.com/downloads or www.bandg.com/downloads.

Contact us

For product support and service information, visit www.simrad-yachting.com/contact-us or www.bandg.com/contact-us.

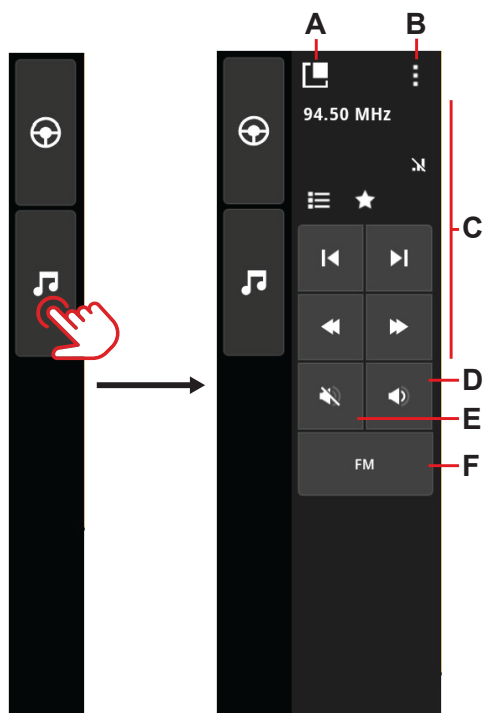
CONTENTS

- 4 Overview**
- 5 Buttons and status icons
- 6 Powering off the audio server**
- 7 Sound settings**
- 8 Audio server settings**
- 9 SiriusXM[®] satellite radio**

OVERVIEW

If a compatible audio server is properly installed on your vessel, you can use the Audio controller to control and customize it.

For installation information, refer to your audio server's installation manual.



A Float button — select to undock the controller from the control bar. To dock the Audio controller, select the float button.

→ **Note:** This option is only available on units with 12" or larger displays.

B More button — select to access settings and options.

C Audio source-dependent information and buttons.

- When listening to an AM/FM broadcast, the top row cycles through favorites.
- When connected to a Bluetooth® or USB source, these buttons cycle through the available tracks.

D Volume button — select to adjust volume level and sound settings.







E Mute button

F Source button — shows a list of available sources.

→ **Note:** If no audio server is connected, the source button does not display.

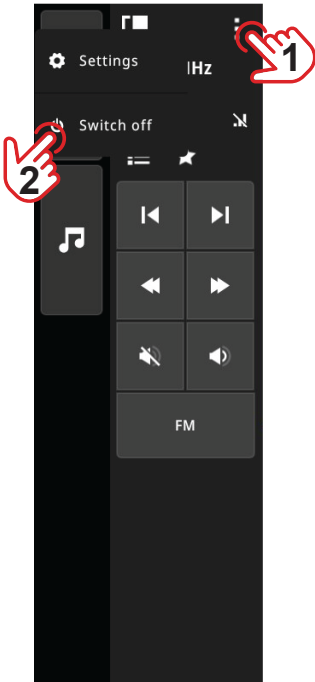
Buttons and status icons

The available buttons and icons depend on the connected audio server and the selected source. The following are some examples:

	Favorite button – select to add a station to your favorites.
	Repeat button – select to toggle between different repeat modes.
	Shuffle button
	Signal strength icon
	Bluetooth® button – select to access pairing options and a list of paired devices. → Note: <i>This works for the SonicHub® 2 series of marine audio servers. For other brands, please refer to equipment settings.</i>
	Favorite AM/FM stations or file browser button.

POWERING OFF THE AUDIO SERVER

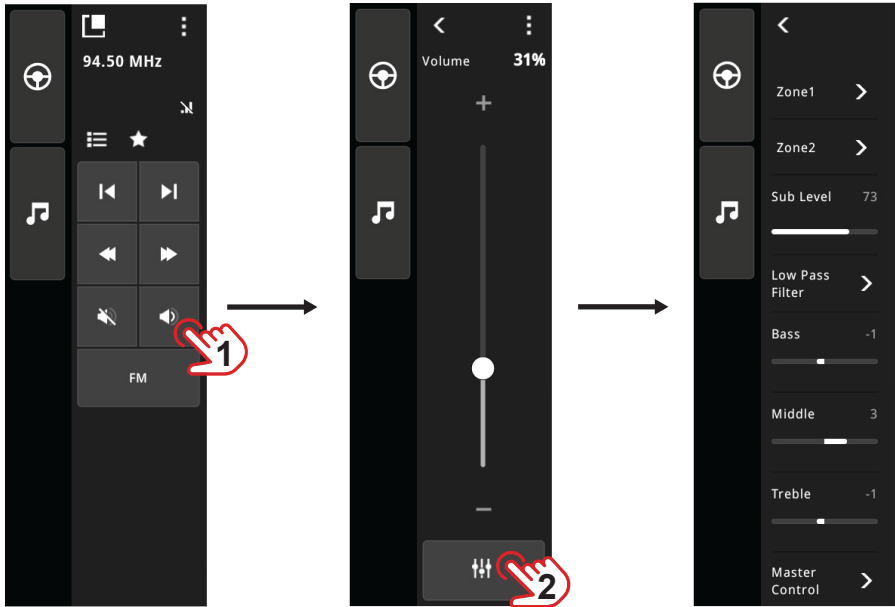
To power off the audio server, select **1** and then **Switch off**.



→ **Note:** The procedure to power on/off your audio server will vary between manufacturers. Refer to the audio server operation manual for details.

SOUND SETTINGS

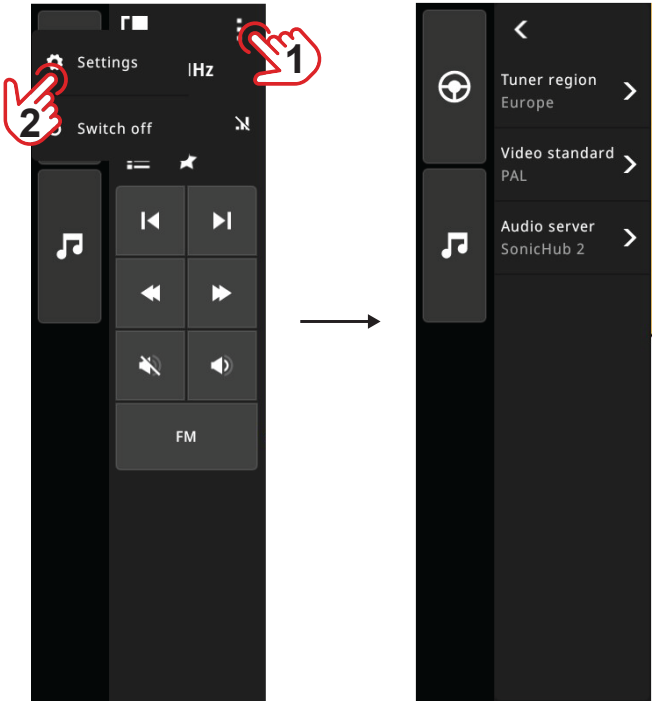
To access the equalizer and other sound settings, select the volume control button and then the sound settings button.



- **Zone 1/Zone 2** – select to adjust the volume level of speakers configured in zones.
 - **Sub level** – select to adjust the output of a connected sub woofer.
 - **Low pass filter** – select to adjust the frequencies you want to pass to the sub woofer.
 - **Bass** – select to adjust the bass tone level.
 - **Middle** – select to adjust the middle tone level.
 - **Treble** – select to adjust the treble tone level.
 - **Master control** – select to adjust the master sound settings for all sources.
- **Note:** The audio server settings will vary between manufacturers. Refer to the audio server operation manual for details.

AUDIO SERVER SETTINGS

To access the audio server settings, select  and then **Settings**.



→ *Note: The available settings depend on the audio server connected to your network.*

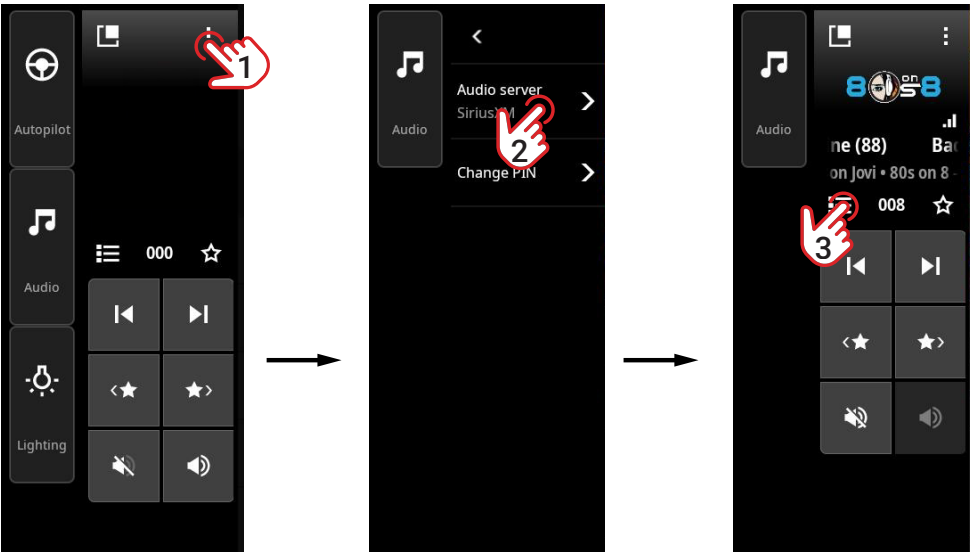
SIRIUSXM® SATELLITE RADIO

i IMPORTANT: SiriusXM® features are available in North America only. For more information refer to www.siriusxm.com/marine.

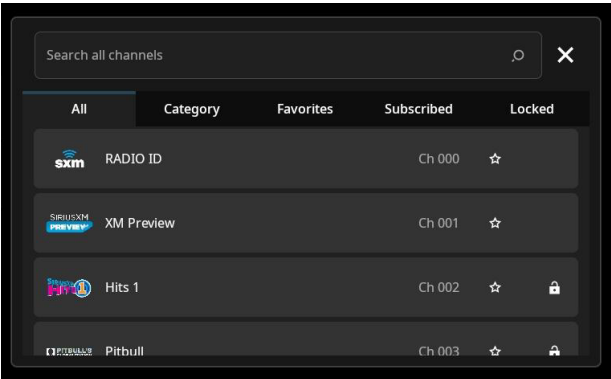
Your MFD can access satellite radio services by SiriusXM®.

A SiriusXM® capable receiver (Navico® WM-4) must be connected to your network and you must have the appropriate SiriusXM® subscription activated.

To access the audio server settings, select **i** (1), then select **SiriusXM** from list (2). To see the list of available channels, select the browse button (3).



You can then search for a station of your choice:



→ **Note:** The available settings depend on the audio server connected to your network.

