

M7000-X+ SYSTEM / MFD CONTROL

Fathom App Guide

ENGLISH

This document is a reference guide for operating a Fathom® M7000-X+ system controlled by a multi-function display. It assumes all the necessary equipment is installed and configured, and the system is ready to use. Images used in this document may not exactly match the screen on your unit due to your system's specific configuration or continuous software improvements. For further information regarding your M7000-X+ system, see the Operation Manual.

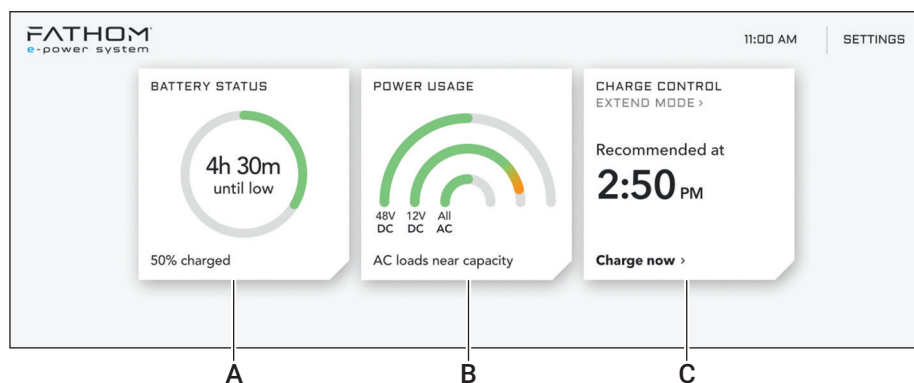
STARTING THE APP



After the system is powered up and started, select the Fathom app icon on the multi-function display (MFD) to display the home screen.

FATHOM E-POWER SYSTEM HOME SCREEN

The system has three tiles used for monitoring battery status, power usage, and charging.



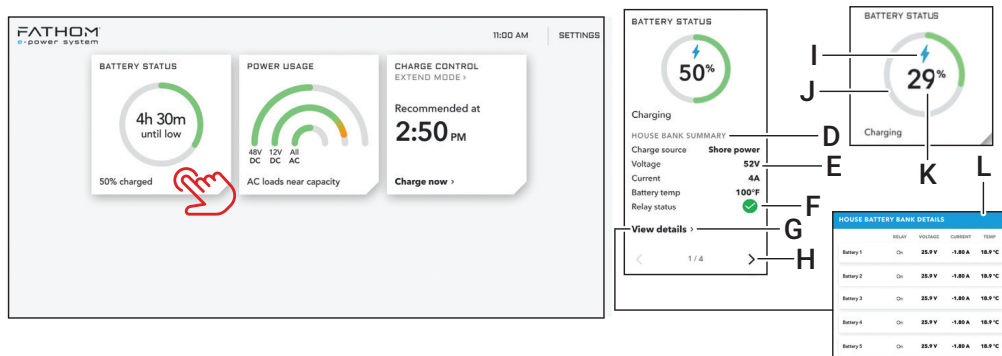
A BATTERY STATUS— Displays power bank status with remaining time or percentage.

B POWER USAGE – Displays output status of the 12 V, 48 V, and AC systems.

C CHARGE CONTROL – Displays current power source and allows control of charge source.

BATTERY STATUS

To access the various battery status tiles, select the **BATTERY STATUS** tile. The **HOUSE BANK SUMMARY** page displays by default, sharing basic information. To display additional information, select **View details**. You can access pages specific to engine battery, inverter/charger, and DC/DC converters by selecting the page selection arrow (H).



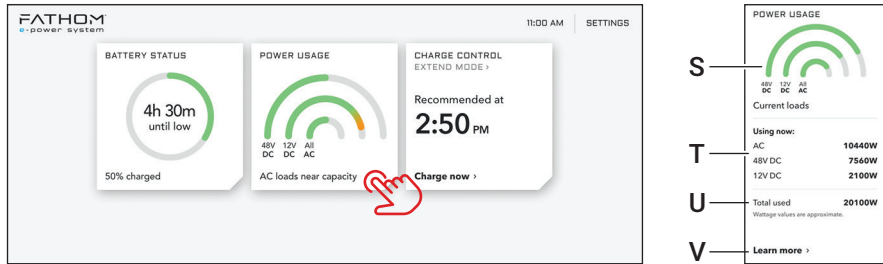
- D Page name – Name of battery banks displayed.
- E System information – Displays specific information on the battery systems.
- F Relay status – Indicates if the relay is in the open (red x icon) or closed (green check icon) condition.
- G View details – Expands tile to display additional information.
- H Page selection arrow – Select to display additional pages within tile (page 1 shown).
- I Charging indicator – Indicates the system is in a charging condition.
- J Charge graph – Indicates the battery capacity.
- K Battery charge display – Indicates battery charge percentage.
- L House Bank details – Displays the different house battery details.



- M Toggle button – Select to switch between percentage view and time remaining.
- N Engine battery status – Displays basic information on battery status.
- O Inverter/charger status – Displays basic information on the inverter/chargers.
- P DC/DC converter status – Displays basic information on the DC/DC converters.
- Q Inverter/charger details – Displays the different inverter/charger details.
- R DC/DC converter details – Displays the different DC/DC converter details.

POWER USAGE

The **POWER USAGE** tile shows the power which can be used by the amenities/devices. Power availability (12 V, 48 V, and AC) varies depending on the accessories or electronics that are currently turned on or installed. To access the power usage status and expand the tile, select the **POWER USAGE** tile. You can access additional pages of information by selecting **Learn more** (V).



S Load output graph – Indicates the output of the 12 V, 48 V, and AC systems.

T Load output information – Indicates the individual power.

U Total load output – Indicates approximate total wattage use.

V Learn more – Select to display additional power usage information.

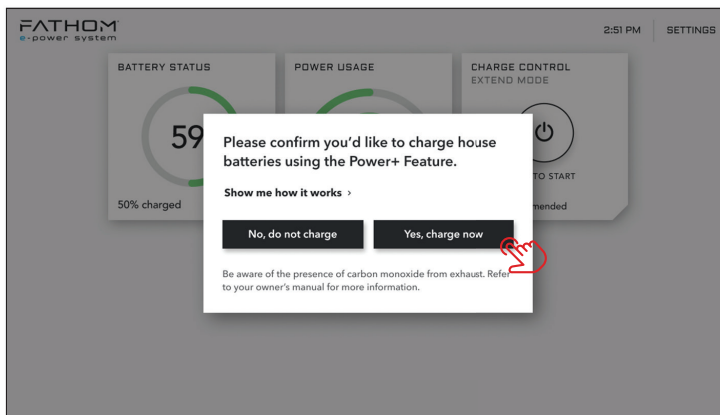
CHARGE CONTROL

Charge control charges the 48 V power bank using engine power in a non-propulsion, stationary state. Charge control recommends charging times, but you have full control on when to start or stop charging. To use charge control:

- Place the engine in the neutral position and trim down.
- Switch the engine key(s) which will be used for charging to OFF and then to Fathom mode or ACC position.

To access charge control and expand the tile, select the **CHARGE CONTROL** tile.

1 Select the **TAP TO START** button and a confirmation message displays. Select **Yes, charge now**.

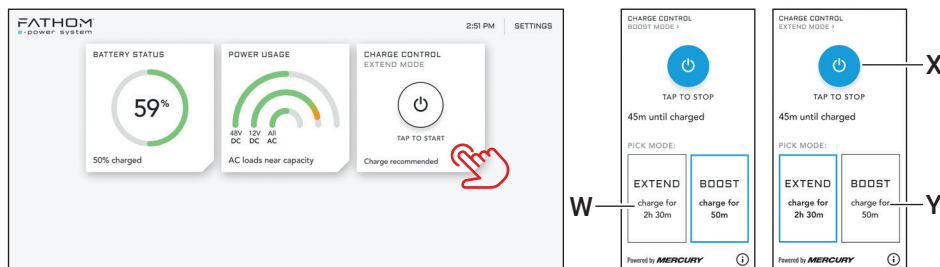


➔ **Note:** Once the engines are warm, they will transition to a preset RPM for fast charging.

2 Select the charge type (default is **EXTEND**):

- **EXTEND** operates the engines at a slower RPM to reduce noise, but charges at a slower rate.
- **BOOST** operates the engines at a higher RPM, but charges at a faster rate.

⚠ WARNING: Be aware of the presence of carbon monoxide from the exhaust. Refer to the M7000-X+ System Operation Manual for more information.



W **EXTEND** – Operates the engines at a slower RPM to reduce noise, but charges at a slower rate.

X **TAP TO START/STOP** – Select to start or stop a charging cycle.

Y **BOOST** – Operates the engines at a higher RPM, but charges at a faster rate.

3 To stop charging, select the **TAP TO STOP** button.

➔ **Note:** Engines running in Fathom mode stop if any key is switched to the RUN state, CO alert or lanyard e-stop is activated, or certain engine faults are active.

FATHOM AUTO-START

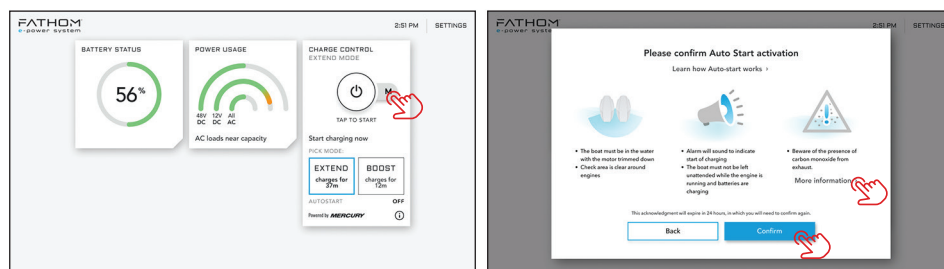
➔ **Note:** Auto-Start is an optional, dealer-enabled feature only available with Mercury Fathom-equipped boats that run Simrad multi-function displays (MFDs).

Auto-Start autonomously manages the enablement and disablement of charge control mode. The feature monitors battery State-of-Charge (SoC) and compares it to a lower threshold which is used to trigger a charge event, and an upper threshold which is used to stop a charge event. Auto-Start manages charging for up to 24 hours and features a low fuel threshold that disables Auto-Start.

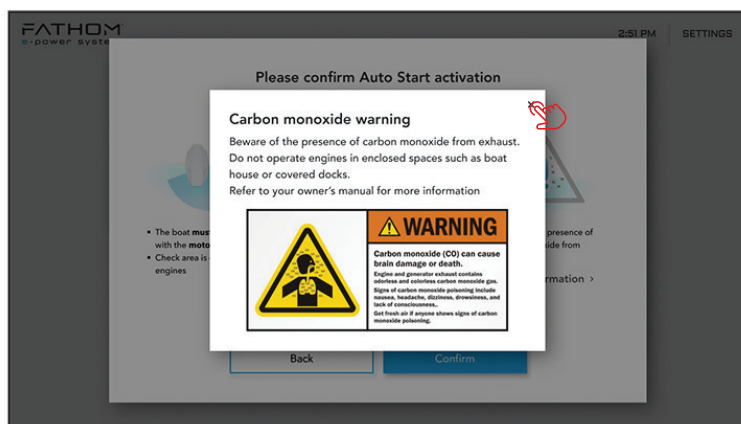
To activate Auto-Start (if equipped):

1 Open the Fathom app and select the **CHARGE CONTROL** tile.

2 Select the **M** (manual) tab and a confirmation page displays. Select **More information** to view the carbon monoxide warning or **Confirm** to return to the tile.

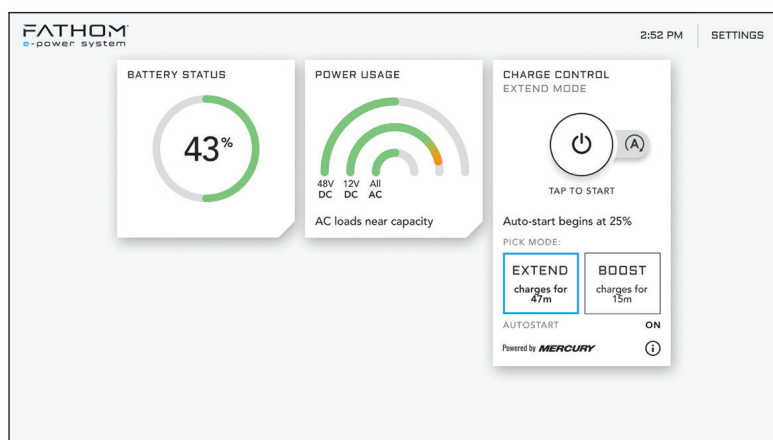


3 If viewing the carbon monoxide warning, select the close icon to return to the confirmation page.

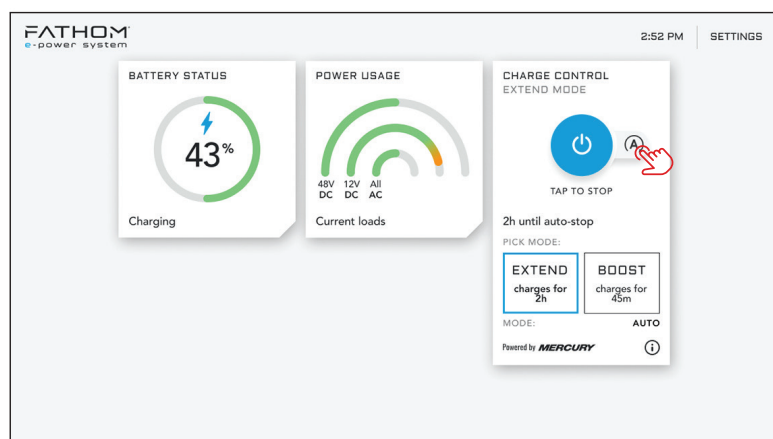


4 After selecting the **Confirm** button, the **CHARGE CONTROL** tile reopens, displaying the **A** (auto) tab. The system is now in Auto-Start mode.

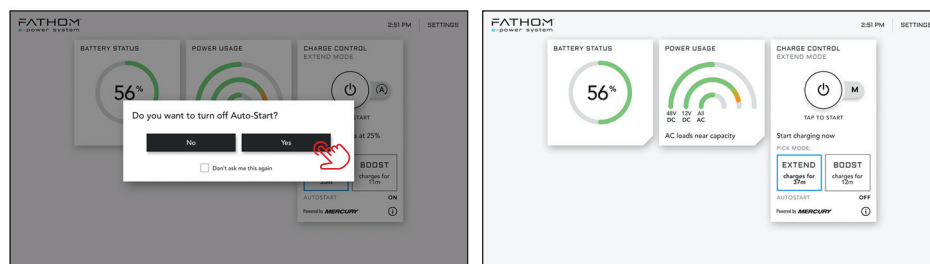
- **Note:** If the battery SoC is below the upper threshold, engine charging begins. If the battery SoC is above the upper threshold, the system displays an estimated time before the system needs to start an engine to charge.
- **Note:** Once the engine RPM has ramped up, you can select **BOOST** for more charge capacity.
- **Note:** To minimize noise and maximize efficiency, Fathom initially starts one engine. If additional charge is needed, additional engines may be started. This may take several minutes. Fathom employs an engine hour balancing feature so the engine starting sequence may differ each time.



5 To exit Auto-Start, press the A (auto) tab.



6 When the message appears confirming you want to turn off Auto-Start, select **Yes**. The A (auto) tab switches to M (Manual).



- **Note:** If the engines were charging, they shut off and the system reverts to manual mode.
- **Note:** At any time during Auto-Start, you can stop an event by pressing the **TAP TO STOP** button which brings the engines back to idle and shut down. The system remains in Auto-Start mode if its SoC is above the low threshold. If the SoC is below the low threshold, the system reverts to manual mode and Auto-Start needs to be re-initiated.