



HEAT AIR

Gas & Electric Space Heater

Recreational Vehicle warm-air heater operates using gas and/or electric

SL3512, SL5512, SL7512, SL5502, SL7502

Operating Instructions



Operating Instructions

Heat Air Pack Contains:

1 x Gas & Electric Space Heater

| Contents: | Page no: |
|--------------------------|----------|
| 1. Safety | 1 - 2 |
| 2. Warnings | 3 |
| 3. Specification | 3 |
| 4. Application | 3 |
| 5. Instructions for Use | |
| • 5.1 Whale Duo Control | 4 - 5 |
| • 5.2 Whale Heat Control | 6 - 7 |
| 6. Troubleshooting | |
| • 6.1 Whale Duo Control | 8 |
| • 6.2 Whale Heat Control | 9 |
| 7. Maintenance / Repairs | 10 |

1. Safety

For safe use carefully read, understand and keep these Operating Instructions. Observe applicable laws, directives and standards.

Not following the information in these Operating Instructions can result in serious material damage and serious risk to health or life of persons. Only operate this appliance and its control panel if they are all in perfect condition. If damaged, contact Whale Support immediately.

It is the sole responsibility of the vehicle owner to ensure that the appliance is in a safe operating condition and is operated correctly.

A Safe Operating Environment

- The unit may be operated only with approved Whale control panels and accessories.
- If the flues have been placed near or directly beneath an opening window, the device **must be** equipped with an automatic shut-off device in order to prevent operation with the window open (BS EN 1949).
- During cleaning do not project water jets directly onto heater casing or flue openings.
- Do not drive the vehicle through a ford or deep water which may submerge the heater.
- The exhaust flue and combustion inlet **must be** kept clear at all times and if necessary cleaned, e.g. in Winter it may be necessary to clear snow (BS EN 624).

- Heater **must not be** operated when refuelling the vehicle, the towing vehicle or other appliances or when the vehicle in which the heater is installed is in a confined space such as a garage (BS EN 624). Ensure that the heater definitely cannot be switched on via any other means of controlling the heater.

Safe Operation of the Heater

- Keep all air inlets and outlets clear at all times (BS EN 624).
- The surfaces of the heater and exhaust flue in addition to the exhaust gases may become hot.
- Any heat sensitive materials **must not be** stored in the same compartment as the heater or warm air ducting and outlets.
- Do not touch the area around the exhaust duct and do not lean any objects against the exhaust duct or flue terminal.
- The gas supplied to the heater **must be** in the gaseous state. (BS EN 1949).

This appliance can be used by children aged from 8 years and above and persons with reduced physical, sensory or mental capabilities or lack of experience and knowledge if they have been given supervision or instruction concerning use of the appliance in a safe way and understand the hazards involved. Children shall not play with the appliance. Cleaning and user maintenance shall not be made by children without supervision. Children of less than 3 years should be kept away unless continuously supervised (BS EN 60335-1).

Children aged from 3 years and less than 8 years shall only switch on/off the appliance provided that it has been placed or installed in its intended normal operating position and they have been given supervision or instruction concerning use of the appliance in a safe way and understand the hazards involved. Children aged from 3 years and less than 8 years shall not plug in, regulate and clean the appliance or perform user maintenance (BS EN 60335-1).

CAUTION: Some parts of this product can become very hot and cause burns.

Particular attention has to be given where children and vulnerable people are present (BS EN 60335-1).

2. Warnings (BS EN 624)








In the unlikely event of leaks in the gas system, or if there is a smell of gas:

- Extinguish all naked flames
- Switch off all appliances and do not operate any electrical switches
- Turn off all gas appliances
- Open windows and doors for ventilation
- Do not smoke
- Shut off gas connection
- Leave the vehicle

Immediately ensure that the system is thoroughly checked by a registered gas engineer at a Whale® Approved Service Centre or by a member of the Whale Service Engineer Network. For Europe, please see enclosed Webasto-Service information.

3. Specification

| | |
|-------------------------|--|
| Flue Type | Type C ₁₃ & C ₅₃ (fanned) |
| Destination Countries | AT, BE, BG, CH, CY, CZ, DE, DK, EE, FI, FR, GB, GR, HU, HR, IS, IT, LT, LU, LV, MT, NL, NO, PL, RO, SE, SI, SK, TR |
| Dry Storage Temperature | -20°C to 70°C |
| Battery Supply | 10.5 – 15.9 V |
| Gas Supply | LPG: Butane/Propane 30mbar - CAT I _{3B/P (30)} |
| IP Rating | IP45 |

|  | Qn [kW]  | Qn [kW]  | M [g/hr]  | V [m ³ /hr]  | Fuse size [A]  | 230 V ~ 50Hz [A] | [kg]  |
|--|---|---|--|--|--|------------------------|---|
| SL3512XX | 2,90 | 3.3 | 239 | 150 | 10 | 13 | 8.7 |
| SL5512XX | 5.45 | 4.70 | 342 | 153 | 10 | 13 | 8.7 |
| SL7512XX | 6.75 | 6.00 | 436 | 153 | 10 | 13 | 8.7 |
| SL5502XX | 5.45 | 4.70 | 342 | 220 | 10 | 13 | 8.7 |
| SL7502XX | 6.75 | 6.00 | 436 | 220 | 10 | 13 | 8.7 |

4. Application (BS EN 624)

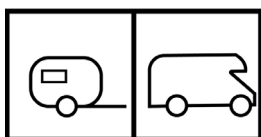
Operation while driving (BS EN 624) , (UN ECE R122)

Throughout Europe, this appliance may be used while driving (according to the directive UN ECE R 122) only if the system includes a gas pressure regulator with an appropriately configured gas installation. National regulations and rules **must be** followed.

Directive UN ECE R 122 stipulates that a safety shut-off device is required if this appliance is operated while driving.

If no safety shut-off device has been installed, the gas cylinder must be closed when driving.

To prevent damage to the appliance from spray water, such as when cleaning the vehicle, do not spray water directly into the exhaust duct, combustion intake or on the heater housing and connections.



These symbols indicate that this appliance is suitable for use in road and leisure accommodation vehicles **ONLY**, it is **NOT** suitable for static homes.



This symbol indicates that this appliance is **NOT** suitable for use on boats.

5.1 Instructions for Use - Whale Duo Control

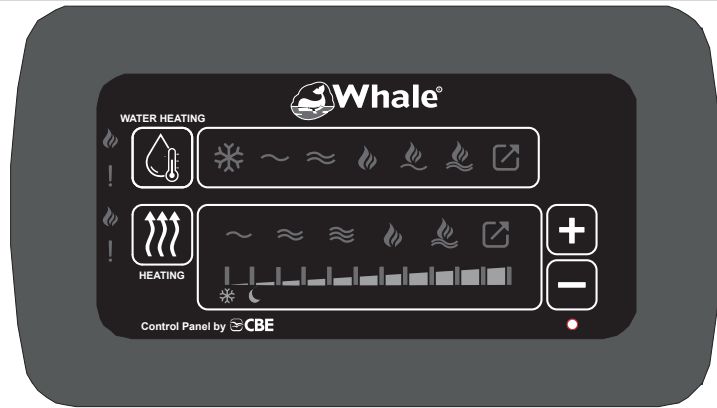
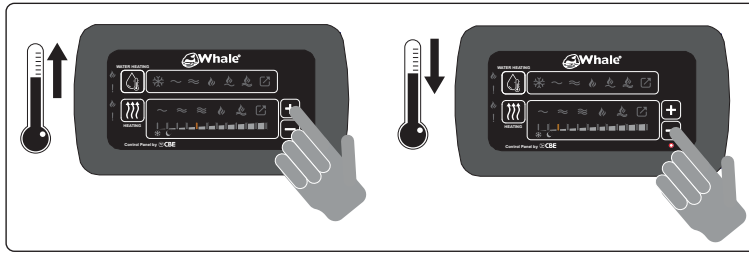


Figure 1. Whale Duo Control Panel

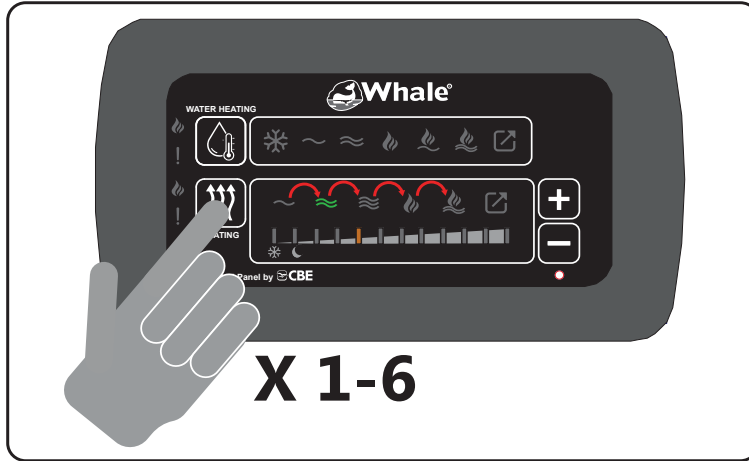
| Icon | Description |
|-----------------------------|---|
| | Space heater on/off & power source selection button |
| | 0.75kW electric selected |
| | 1.50kW electric selected |
| | 3.00kW electric selected |
| | Gas selected |
| | Gas + electric selected |
| | External control from alternative source* |
| | Increase temperature button |
| | Decrease temperature button |
| | Gas lit indicator |
| | Lockout indicator |
| | Frost protection mode (approx. 5°C) |
| | Night time mode (approx. 16°C) |
| Temperature settings | |
| | |

*Not available on all models. External control will allow control of the heater via an alternative source. Please refer to your vehicle handbook for more information.

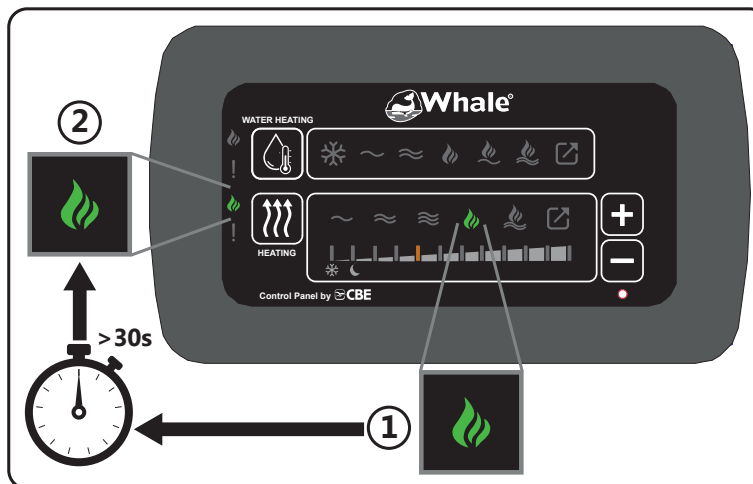
1. Select Temperature









2. Select Power Setting



3. Gas Power On



| Usable Electric Settings | | |
|----------------------------|---|--|
| 6A 0.75kW 230V a.c. |  |  |
| 10A 1.50kW 230V a.c. |  |  |
| 16A 3.00kW 230V a.c. |  |  |

Electric Power Management

When selecting a high electric setting on the space or water heater, the control panel may automatically step down the other Whale space / water heater to a lower electric setting or turn off if at risk of exceeding 16A. The last heater selected has AC mains priority.

5.2 Instructions for Use - Whale Heat Control

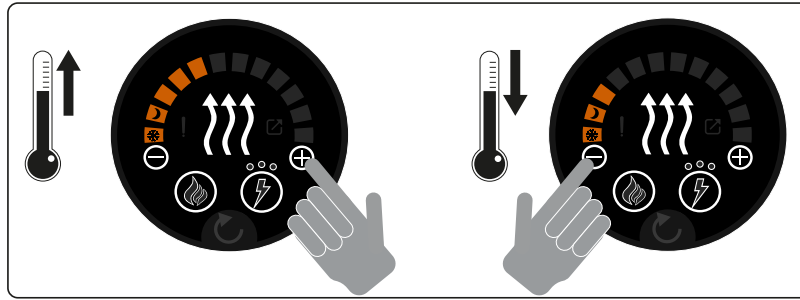


Figure 2. Whale Heat Control Panel

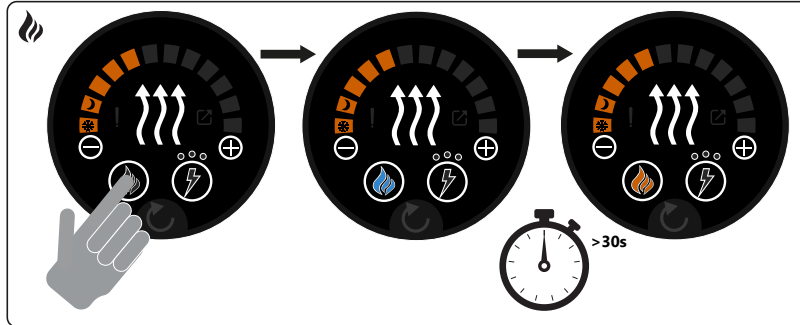
| Icon | Description |
|------|---|
| | Gas heating button |
| | Gas heating standby indicator |
| | Gas heating on |
| | Frost protection mode (approx. 5°C) |
| | Night time mode (approx. 16°C) |
| | Increase temperature button |
| | Decrease temperature button |
| | Lockout indicator |
| | Electric heating button |
| | Electric heating standby indicator |
| | 0.75kW electric |
| | 1.50kW electric |
| | 3.00kW electric |
| | External control from alternative source available* |
| | External control from alternative source active* |
| | Reset button |

*Not available on all models. External control will allow control of the heater via an alternative source. Please refer to your vehicle handbook for more information.

1. Select Temperature

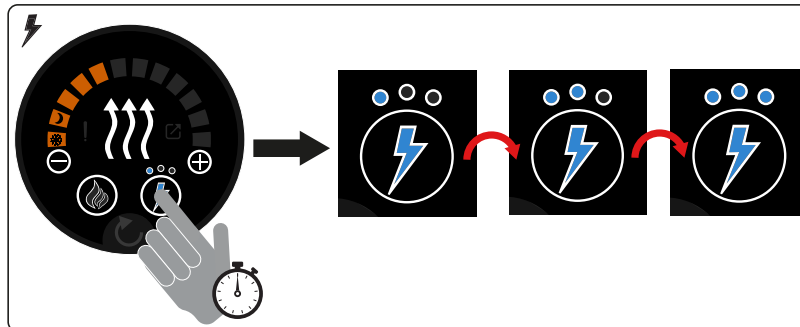


2. Activate Gas Power

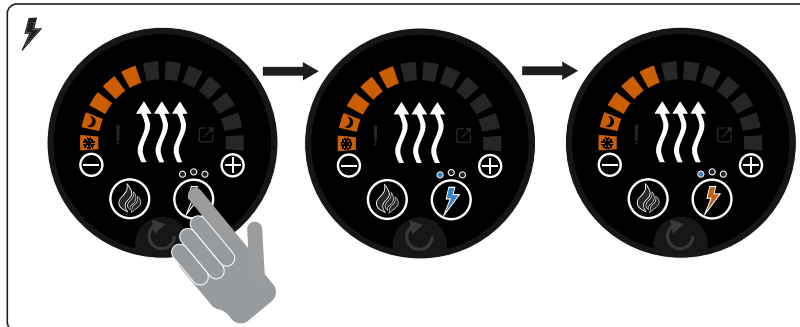


And/Or

3.a. Select Electric Setting



3.b. Activate Electric Power

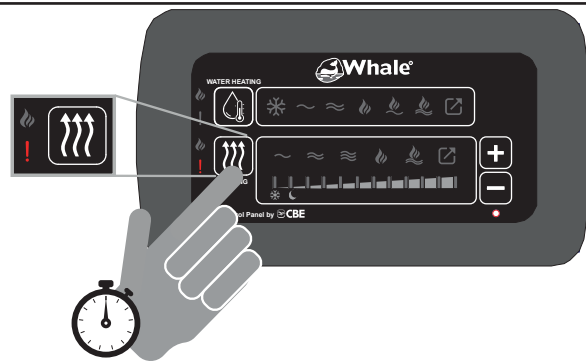


Usable Electric Settings

| | | |
|----------------------------|--|--|
| 6A 0.75kW 230V a.c. | | |
| 10A 1.50kW 230V a.c. | | |
| 16A 3.00kW 230V a.c. | | |

6.1 Troubleshooting - Whale Duo Control

Step 1 - Show Lockout

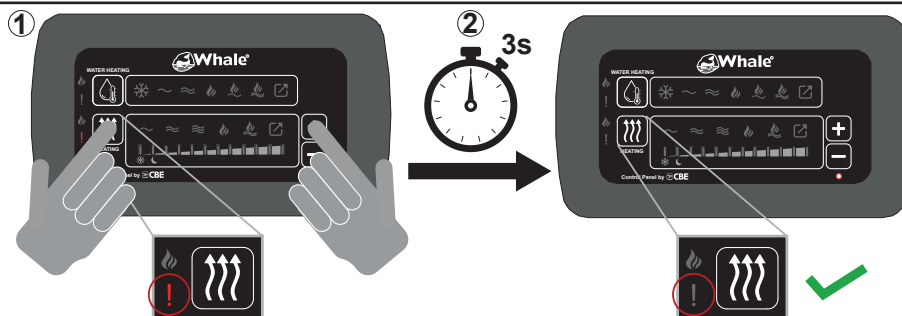


Step 2 - Identify Lockout

Step 3 - Recommended Action


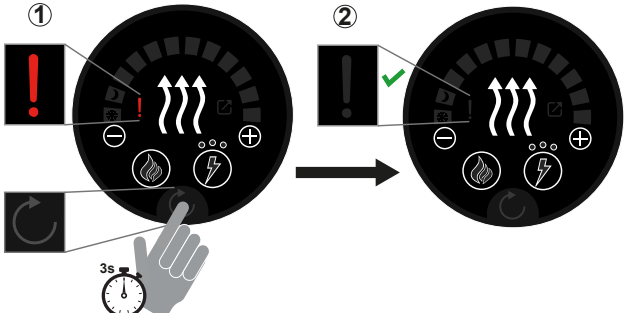
| | | |
|---|--|--|
| 1 | | Inadequate gas supply <ol style="list-style-type: none"> 1. Check gas 2. 30mbar LPG 3. Go to step 4 |
| 2 | | Overheat <ol style="list-style-type: none"> 1. Check air vents and ducts are not restricted 2. Wait 10 mins for heater to cool down 3. Go to step 4 |
| 3 | | Inadequate supply voltage 10.5 - 15.9V d.c. - Heater inoperable under 10.1V $\geq 10.5 / \leq 15.9V$ d.c. ✓ $< 10.5 / > 15.9V$ d.c. ✗ Go to step 4 |
| 4 | | Flue blockage <ol style="list-style-type: none"> 1. Check flues for blockages 2. Go to step 4 |
| 5 | | Internal fault <ol style="list-style-type: none"> 1. Call Whale Support + 44 (0)345 9090 911. For Europe, please see enclosed Webasto-Service information 2. Go to step 4 |
| 6 | | Multiple faults <ol style="list-style-type: none"> 1. Power off 2. Check heater for recurring faults 3. Power on 4. Go to step 4 |

Step 4 - Clear Lockout



If problems persist please contact Whale Support on + 44 (0)345 9090 911. For Europe, please see enclosed Webasto-Service information.

6.2 Troubleshooting - Whale Heat Control

| Step 1 - Show Lockout | |
|--|---|
|  | |
| Step 2 - Identify Lockout | Step 3 - Recommended Action |
| 1 | Inadequate gas supply <ol style="list-style-type: none"> 1. Check gas 2. 30mbar LPG 3. Go to step 4 |
| 2 | Overheat <ol style="list-style-type: none"> 1. Check air vents and ducts are not restricted 2. Wait 10 mins for heater to cool down 3. Go to step 4 |
| 3 | Inadequate supply voltage 10.5 - 15.9V d.c. - Heater inoperable under 10.1V $\geq 10.5 / \leq 15.9V$ d.c. ✓ $< 10.5 / >15.9V$ d.c. ✗ Go to step 4 |
| 4 | Flue blockage <ol style="list-style-type: none"> 1. Check flues for blockages 2. Go to step 4 |
| 5 | Internal fault <ol style="list-style-type: none"> 1. Call Whale Support +44 (0)345 9090 911. For Europe, please see enclosed Webasto-Service information 2. Go to step 4 |
| 6 | Control Panel fault <ol style="list-style-type: none"> 1. Power off 2. Power on |
| 7 | Multiple faults <ol style="list-style-type: none"> 1. Power off 2. Check heater for recurring faults 3. Power on 4. Go to step 4 |
| Step 4 - Clear Lockout | |
|  | |

If problems persist please contact Whale Support on +44 (0)345 9090 911. For Europe, please see enclosed Webasto-Service information.

7. Maintenance / Repairs

The vehicle owner must arrange for the appliance to be serviced at least every 2 years from date of purchase, including its gas supply and ducting for the products of combustion (BS EN 624).

All maintenance and repairs must be carried out by a registered gas engineer at a Whale® Approved Service Centre or by a member of the Whale Service Engineer Network.

For installation or service information, contact Whale® Support:

Tel: +44 (0)345 9090 911

Email: info@whalepumps.com

For Europe, please see enclosed Webasto-Service information.

Guarantee claims, warranty claims and acceptance of liability will be ruled out in the event of the following:

- Modifications to the appliance (including accessories)
- Modifications to the exhaust duct or combustion intake
- Use of replacement and accessory parts other than original Whale parts
- Failure to follow the installation and operating instructions
- Use of the appliance for non-leisure purposes

The heat exchanger **must be** replaced with a Whale original spare part every 10 years from date of registration. See the data label on the heater for the first time it was put into service.

Disposal

This product must be disposed of in accordance with the regulations of the respective country in which it is used. National regulations and laws must be observed.

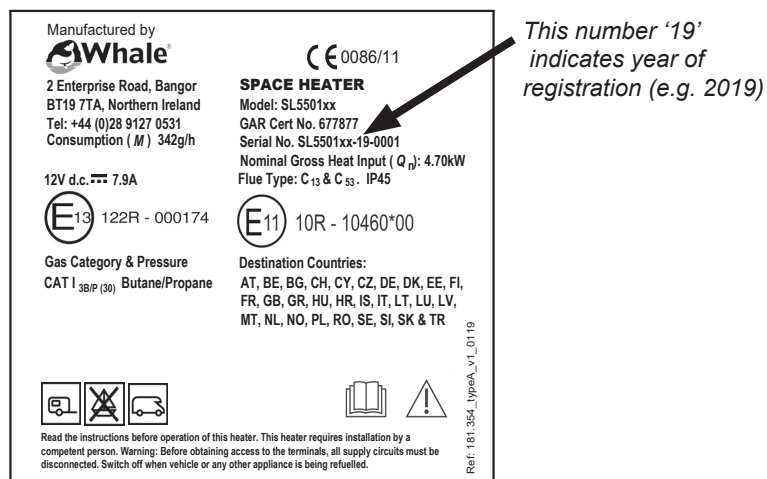
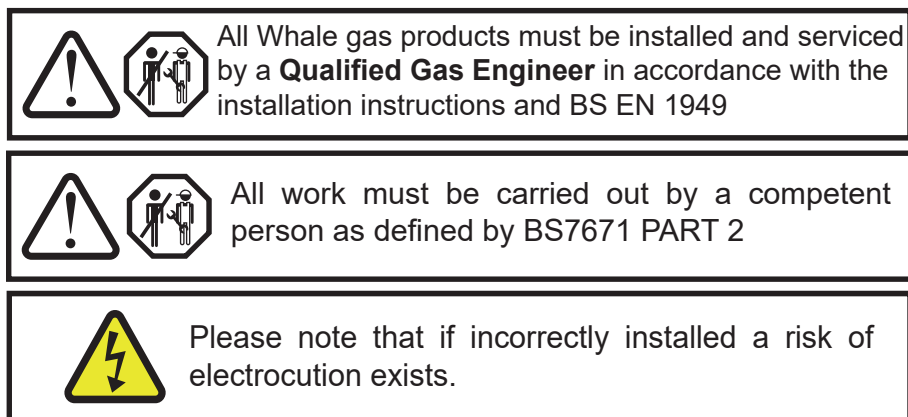


Figure 3. Heater Data Label Example

Please note: The appliance **must be** installed and serviced in accordance with any relevant regulations in the country where the appliance is installed.



If the electrical supply cord is damaged, it must be replaced by the manufacturer, its service agents or similarly qualified persons in order to avoid a hazard (BS EN 60335-1).

EU Declaration of Conformity

Description of Equipment: Space Heater

Manufacturer's Declaration

We hereby declare, under our sole responsibility, that the above equipment complies with the provisions of the following EC Directives.

Gas Appliance Regulation 2016/426/EC on the approximation of the laws of the Member States relating to appliances burning gaseous fuels.

Low Voltage Directive 2014/35/EU on the harmonization of the laws of the Member States relating to electrical equipment designed for use within certain voltage limits.

Electromagnetic Compatibility Directive 2014/30/EU, on the approximation of the laws of the Member States relating to automotive electromagnetic compatibility.

Automotive EMC Directive 2004/104/EC (latest amendment 2009/19/EC) as per ECE Regulation No. 10.05.

ECE Regulation No.122, Uniform technical prescriptions concerning the approval of vehicles of categories M; N and O with regard to their heating systems.

2000/53/EC End of Life Vehicle Directive.

CE mark first affixed: December 2018

Basis on which conformity is declared: The above equipment complies with the protection requirements of the EMC Directive and the principal elements of the safety objectives of the Low Voltage Directive.

Please contact Whale® if further details are required.

Richard Bovill
Engineering Director
Manufactured by
Whale
2 Enterprise Road
Bangor
BT19 7TA
Tel: +44 (0)28 9127 0531

Patents and Trademarks

The Whale® Space Heater is protected by two pending patents.
Whale® is a registered trademark of Munster Simms Engineering Ltd.

Warranty

This Whale product is covered by a 2 year warranty. Please see the enclosed document for details of our Statement of Limited Warranty. Caravan or Motorhome manufacturer's warranty terms may apply, please refer to manufacturer's handbook for details.

© Copyright Whale 2019 - All rights reserved. Reproduction in whole or in part without permission is prohibited.

WHALE®, is a registered trademark of Munster Simms Engineering Limited, Bangor, Northern Ireland trading as Whale. Whale's policy is one of continuous improvement and we reserve the right to change specifications without prior notice. Illustrations are for guidance purposes only.

Neither the accuracy nor completeness of the information contained in this or any product literature is guaranteed by the Company and may be subject to change at its sole discretion.

Notes:



Munster Simms Engineering Ltd
2 Enterprise Road, Bangor, N. Ireland BT19 7TA
Tel: +44 (0)345 9090 911
info@whalepumps.com

whalepumps.com

